

WELCOME TO PRIMARY 6 PARENTS ' BRIEFING

31 March 2023



PUNGGOLGREEN
PRIMARY SCHOOL

Future-Ready Leaders With The Heart For Others

OUTLINE OF TODAY'S SHARING

1

Intent of PSLE

2

Understanding how the PSLE Scoring System works

3

Understanding Full Subject-Based banding and Secondary 1 Posting Exercise

4

Choice of Secondary School & DSA

5

PGPS Performance at PSLE 2022

6

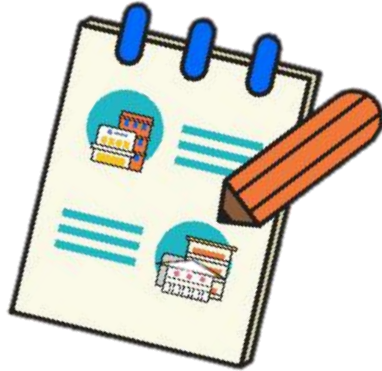
Tips for Parents: Strategies in Supporting Your Child to Achieve Academic Excellence

WHAT IS THE INTENT OF THE PSLE?

1. A useful checkpoint at the end of primary school

2. Allow students to gauge their strengths, interests and areas for growth

3. A fair tool to determine secondary school posting



HOW THE PSLE SCORING SYSTEM WORKS



FROM T-SCORE TO SCORING BANDS



PUNGGOLGREEN
PRIMARY SCHOOL

FROM T-SCORE TO SCORING BANDS

a) Reduces fine differentiation of students' examination results at a young age

- Students with similar scores in each subject are grouped into wider scoring bands measured in 8 ALs.

b) Reflects a student's individual level of achievement

- Students' ALs for each subject reflect their level of achievement, rather than how they have performed relative to their peers.

AL	RAW MARK RANGE
1	≥ 90
2	85 – 89
3	80 – 84
4	75 – 79
5	65 – 74
6	45 – 64
7	20 – 44
8	< 20



GRADING OF FOUNDATION LEVEL SUBJECTS

- Foundation subject grades are graded in scoring bands from **AL A to C**.
- To derive a student's overall PSLE Score for S1 Posting, AL A to AL C for Foundation level subjects are **mapped to AL 6 to AL 8 of Standard level subjects respectively**.
- Similar to the PSLE T-score system, this mapping is based on the learning and assessment load of the subjects and informs students of how ready they are for the curriculum in secondary school.

FOUNDATION LEVEL AL	FOUNDATION RAW MARK RANGE	EQUIVALENT STANDARD LEVEL AL
A	75 – 100	6
B	30 – 74	7
C	< 30	8

GRADING OF MOTHER TONGUE EXEMPT STUDENTS

- For students exempted from MTL, due to extenuating circumstances, an MTL score will be assigned to them to get their overall PSLE score using a similar system as T-score:
 - Take reference from peers with similar scores for English, Mathematics and Science scores
 - Maintain parity of treatment with students who take Foundation MTL (who will score between AL 6 to AL 8)
- Hence, students exempted from MTL will receive an MTL score between **AL 6 to AL 8**.

4 SUBJECT ALS WILL BE ADDED TO FORM THE OVERALL PSLE SCORE

- The PSLE Score can range from 4 to 32, with 4 being the best possible total score.
- Students are placed in secondary school based on their school choice order and school's cut-off AL score.

AN EXAMPLE OF HOW A STUDENT'S PSLE SCORE IS CALCULATED



English Language	AL3
Mother Tongue Language	AL2
Mathematics	AL1
Science	AL2

PSLE Score: 8



CRITERIA FOR PROMOTION TO SECONDARY SCHOOL

Subjects taken at Standard level

Total AL Score
30 or lower

and

***AL 7** or better in both
English and Math
(*ONLY if total AL falls in 26 to 30 range)



Progress to Mainstream
Secondary School

Subjects taken at Foundation level

Total AL Score
30 or lower

and

AL B or better in both
English and Math



Progress to Mainstream
Secondary School

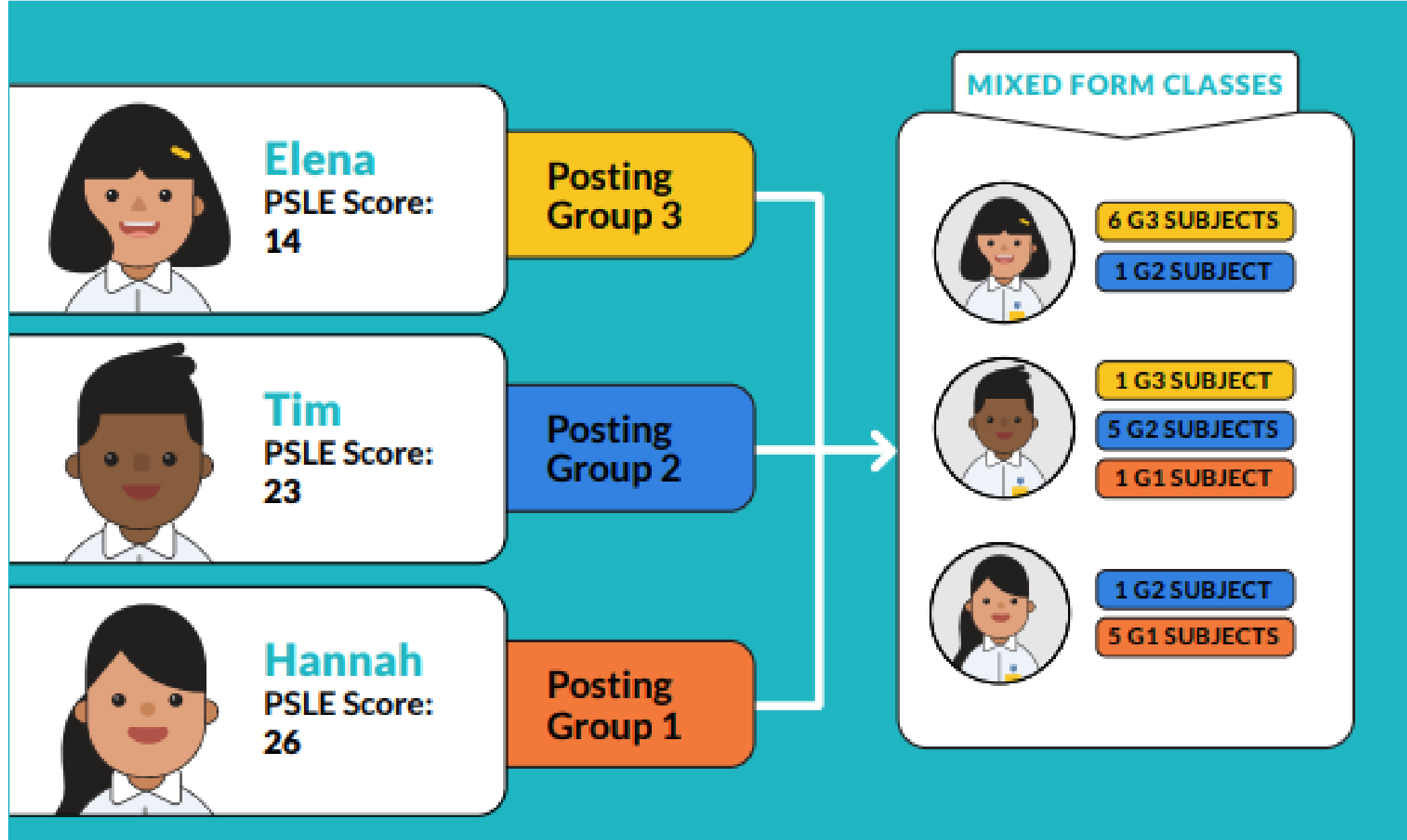
Similar to the T-score system, students who are not eligible to progress to mainstream secondary school, would be offered the option to repeat the PSLE, or progress to NorthLight School or Assumption Pathway School with their principal's endorsement.

OVERALL PSLE SCORE AND PLACEMENT OUTCOME

PSLE Score	Posting Group	Subject level for most subjects
4 – 20	3	G3
21 and 22	2 or 3	G2 or G3
23 and 24	2	G2
25	1 or 2	G1 or G2
26 – 30 (with AL 7 in EL and MA)	1	G1



OVERALL PSLE SCORE AND PLACEMENT OUTCOME – EXAMPLE



ELIGIBILITY CRITERIA FOR HIGHER MOTHER TONGUE LANGUAGE (HMTL)

ELIGIBILITY CRITERIA FOR HMTL

(i) An overall PSLE Score of 8 or better

or

(ii) An overall PSLE Score of 9 to 14 (inclusive); and attain

- **AL 1 / AL 2 in MTL or**
- **Distinction / Merit in HMTL**

- The eligibility criteria for taking HMTL takes reference from past criteria.
- It ensures students can cope with the higher academic load.
- Secondary schools continue to have the flexibility to offer HMTL to students who do not meet the criteria if they:
 - have high ability and interest in MTL, and
 - are able to cope with the learning load required.



FULL SUBJECT BASED BANDING (SBB) (SECONDARY)

ONE SECONDARY EDUCATION
MANY SUBJECT BANDS



PUNGGOLGREEN
PRIMARY SCHOOL

FULL SUBJECT-BASED BANDING (FULL SBB) TIMELINE

Link to PSLE-FSBB Microsite



<https://go.gov.sg/pslefsbb>



2020

Full SBB pilot commenced in 28 secondary schools. Feedback from pilot schools has been positive.

**31
schools**

2022

Full SBB will continue to be rolled out to more schools in phases.

**Next
phase of
schools**

2023

**Final
phase of
schools**

2024

From 2024,

- There will no longer be Express, N(A) and N(T) courses.
- Students will be able to study subjects at different levels that suit their interests, strengths and learning needs.

**Common
National
Exam**

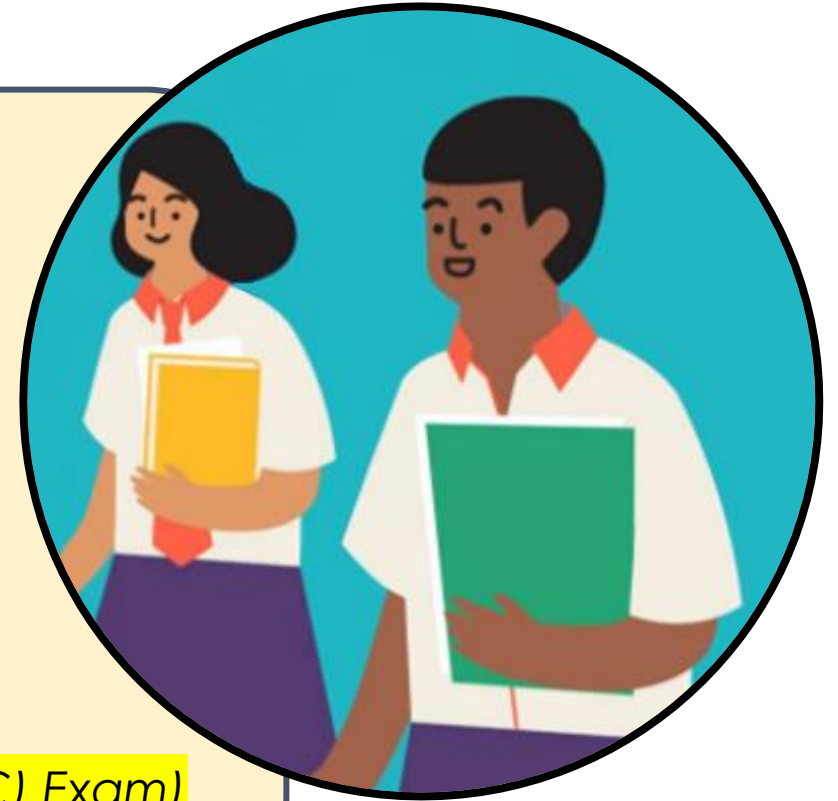
2027

From 2027, students will sit for a common national examination and receive a new national certification with subjects at different levels.

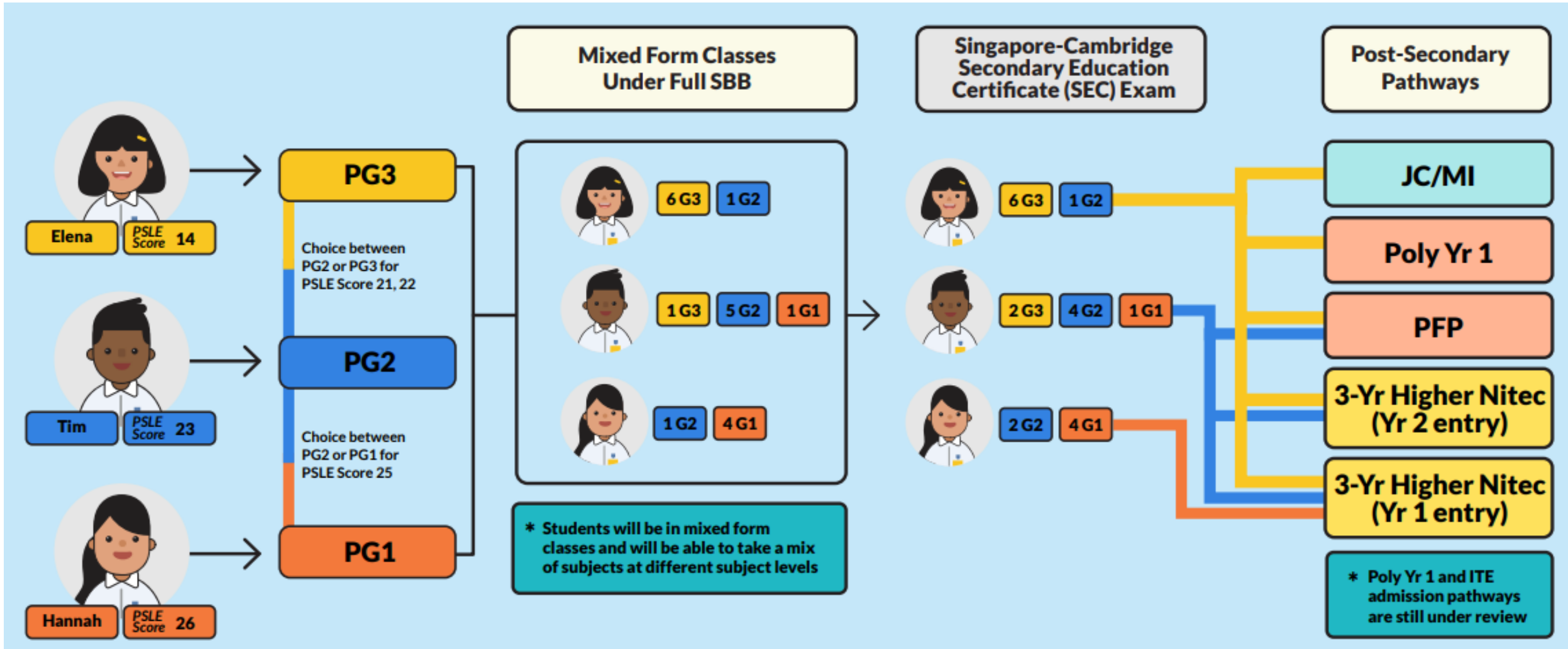
FULL SUBJECT-BASED BANDING (FULL SBB)

- The following are changes that students will experience under Full SBB from 2024:

- Removal of Express, N(A) and N(T) courses
(Replaced with posting groups, PG1, PG2 and PG3)
- Mixed form classes
- Offering subjects at a more demanding level,
including Humanities subjects
- Common National Examinations
(Singapore-Cambridge Secondary Education Certificate (SEC) Exam)

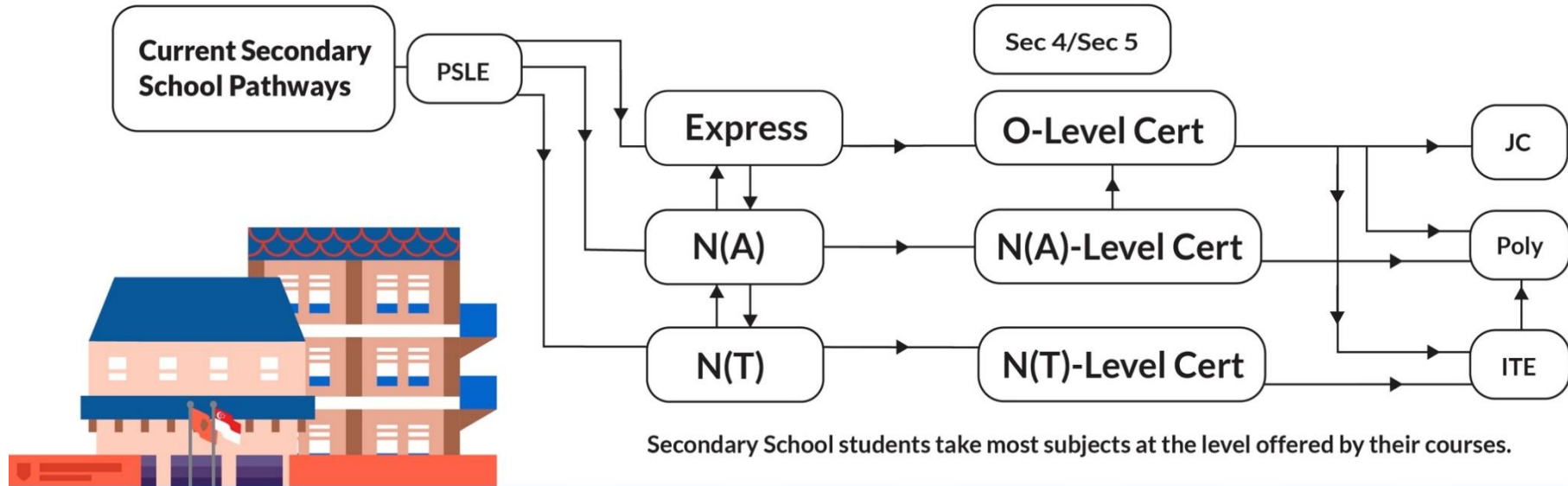


FULL SUBJECT-BASED BANDING (SECONDARY) AND BEYOND

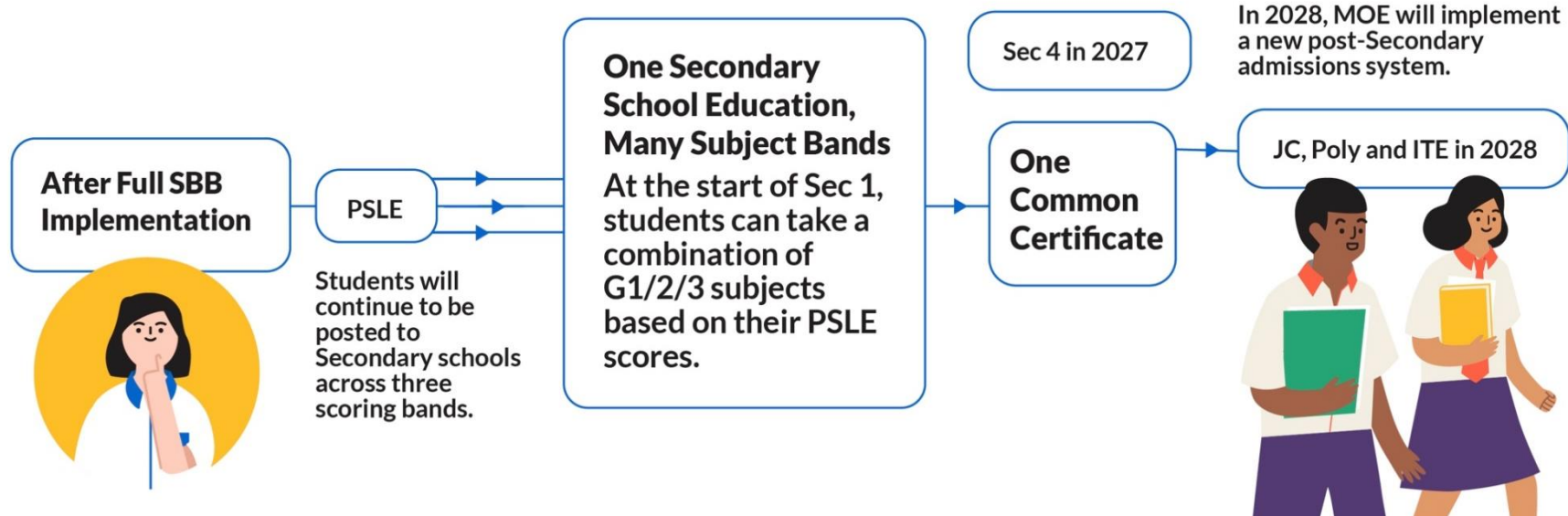


ONE SECONDARY EDUCATION, MANY SUBJECT BANDS

Current System



From 2024



PRIMARY SCHOOL → SECONDARY SCHOOL

S1 Posting Exercise

Choice

Choice

Direct School
Admission – Secondary
(DSA – Sec)



PUNGGOLGREEN
PRIMARY SCHOOL

PATHWAYS TO SECONDARY SCHOOL



PSLE/S1 Posting Exercise

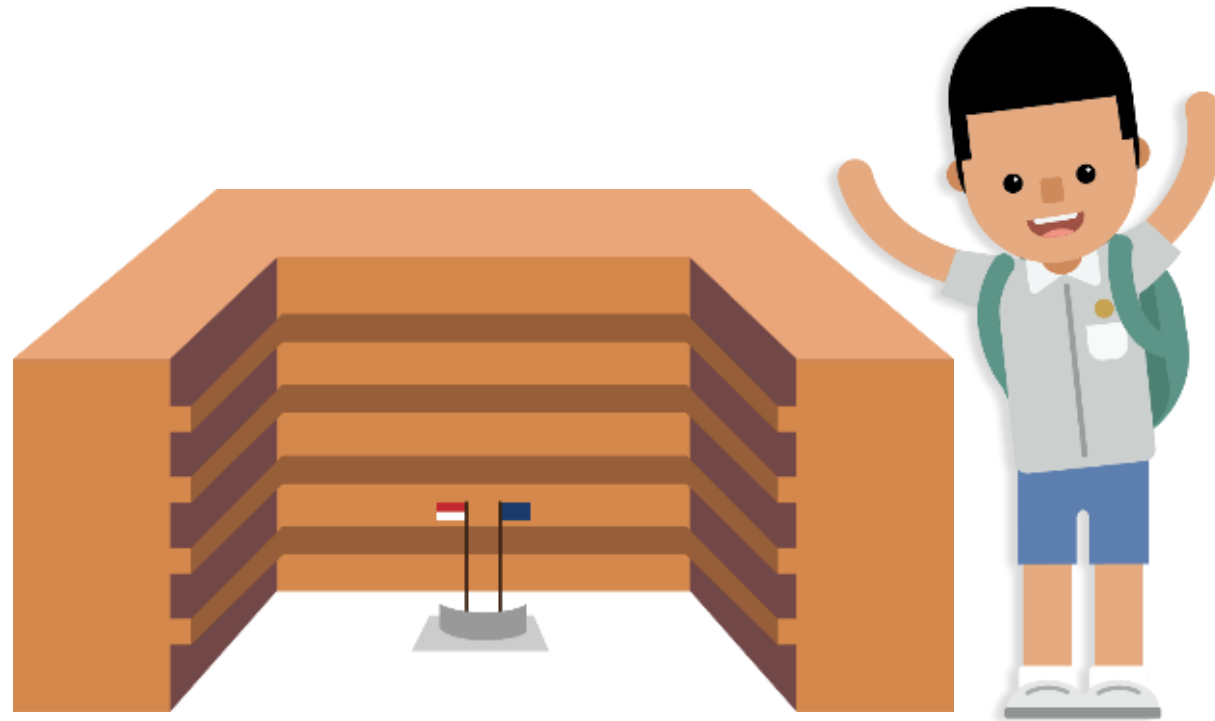
- Based on a student's **PSLE score (Total AL score)**
- **Most students enter secondary schools this way**



DSA-Sec

- Based on a diverse range of **talents and achievements in specific academic subjects or non-academic areas, beyond what the PSLE recognizes**
- Allows students to **access school programmes to develop their talents**

UNDERSTANDING HOW THE S1 POSTING SYSTEM WORKS





CHOICE ORDER OF SCHOOLS MATTERS!

- Students continue to have six choices in selecting their secondary schools.
- Similar to past years, students continue to be posted to a secondary school based on academic merit, i.e., PSLE Score, and their school choice order.
- If there are two or more students with the same PSLE Score vying for the last remaining place(s) in a school, the following tie-breakers will be used in the following order:
 1. CITIZENSHIP
 2. CHOICE ORDER OF SCHOOLS (New tie-breaker from 2021 onwards) **NEW**
 3. COMPUTERISED BALLOTING
- The new tie-breaker based on school choice order recognises the different considerations that families have in making school choices.

Tie-breakers

in the new S1 Posting System

Tie-breakers are used only if there are two or more students with the same PSLE Score vying for the last available place(s) in a school.

Here's a simplified example.

5 students are vying for the last places in the schools of their choice.

Jane

Singapore
Citizen

16 pts

SCHOOL CHOICES:

- 1) Sch A
- 2) Sch ...
- 3) Sch ...
- 4) Sch ...



Bryan

Singapore
Citizen

20 pts

SCHOOL CHOICES:

- 1) Sch B
- 2) Sch ...
- 3) Sch ...
- 4) Sch ...



Mary

Singapore
Citizen

20 pts

SCHOOL CHOICES:

- 1) Sch A
- 2) Sch B
- 3) Sch C
- 4) Sch ...



Alan

Permanent
Resident

20 pts

SCHOOL CHOICES:

- 1) Sch A
- 2) Sch B
- 3) Sch D
- 4) Sch ...



Rina

Permanent
Resident

20 pts

SCHOOL CHOICES:

- 1) Sch A
- 2) Sch B
- 3) Sch D
- 4) Sch E



Students with better scores will be posted first

Jane has a better PSLE score. She will be posted first, to **School A**.



Tie-breaker #1:
Citizenship

Bryan, Mary, Alan and Rina have the same score.

As Jane has taken the last available place in School A, Bryan, Mary, Alan and Rina will vie for the last available place in their next choice, **School B**.

Bryan and Mary are Singapore Citizens. They will have priority to enter **School B**.



Alan and Rina will be tie-broken out as they are Permanent Residents. They will be considered for their next choice, **School D**.



Tie-breaker #2:
Choice order of schools

Because Bryan ranked School B higher than Mary, he will be posted to **School B**.



Since Bryan has taken the last place in School B, Mary will be posted to **School C**.



Alan and Rina have both ranked School D as their third choice. They will go through computerised balloting to vie for the last remaining place in **School D**.



Tie-breaker #3:
Computerised balloting

Through computerised balloting, Alan is posted to **School D**.



Since Alan has taken the last place in School D, Rina will be posted to her fourth choice, **School E**.









USING HCL FOR ADMISSION INTO SAP SCHOOLS

- Students with better PSLE score will be posted first even if the student has not taken HCL in primary schools.
- ONLY if 2 students with same PSLE score apply for the **same SAP school**, student with better HCL will be posted first.

Students who obtained a Distinction/Merit/Pass for HCL at the PSLE and an overall PSLE Score of 14 or better will receive a posting advantage when applying to SAP schools.

Students will be considered for admission to SAP schools in the following order:

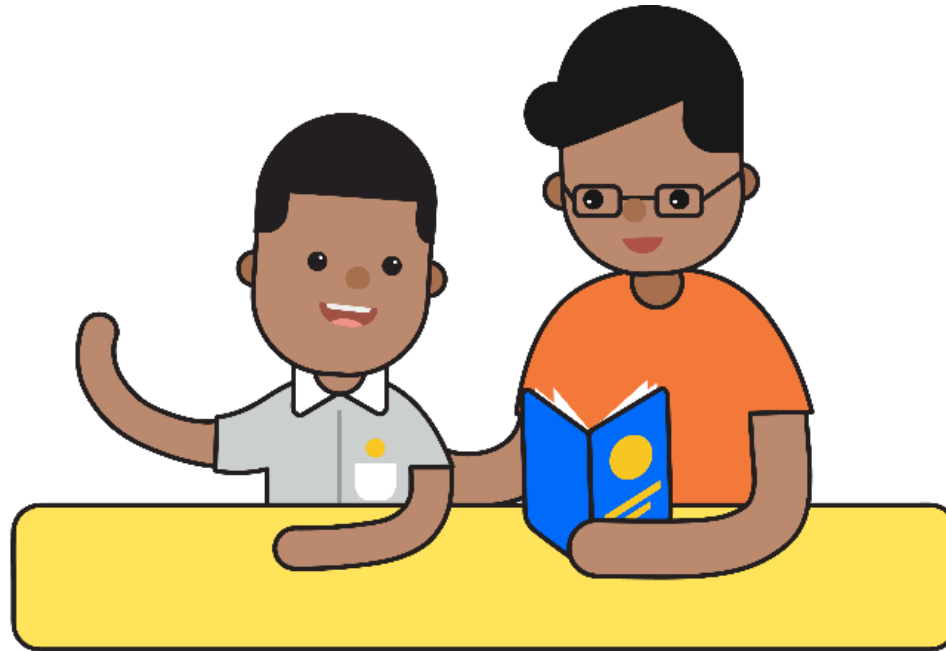
1st		7	NO HCL
2nd		8	DISTINCTION
3rd		8	MERIT
4th		8	PASS
5th		8	NO HCL
6th		9	DISTINCTION

Students with better PSLE Scores will be posted first, even if they did not take HCL.

Amongst students with the same PSLE Score, those with better HCL grades will be posted first.



CHOOSING SUITABLE SECONDARY SCHOOLS WITH YOUR CHILD



PUNGGOLGREEN
PRIMARY SCHOOL

SCHOOL CHOICE JOURNEY

- The PSLE Score ranges are a **useful reference point** for parents and students to consider secondary schools.
- Use this information, together with other **important factors** such as the
 - **secondary schools' distinctive programmes,**
 - **CCAs,**
 - **ethos and cultures,**
 - **proximity to home**to shortlist schools that would best fit the educational needs of the student.



PUNGGOLGREEN
PRIMARY SCHOOL

PSLE SCORE RANGES FOR INDIVIDUAL SECONDARY SCHOOLS



PUNGGOLGREEN
PRIMARY SCHOOL

PSLE SCORE RANGES FOR ALL SECONDARY SCHOOLS

- Use the PSLE Score ranges as a reference alongside other important factors, such as the school's distinctive programmes, Co-Curricular Activities (CCA), culture, ethos, and proximity to home when shortlisting school choices that would best fit your child's educational needs.
- The 2022 PSLE Score ranges for individual secondary schools will be available for your reference on <https://moe.gov.sg/schoolfinder> and <https://go.gov.sg/exploreschools>. They reflect the PSLE scores of the student posted into these schools at the 2022 S1 Posting Exercise.
- A school's **PSLE Score range** (including Cut-Off-Point) for a particular year is not pre-determined before the posting, and **may vary from year to year**, depending on the current cohort's PSLE results and their school choices in the current year's S1 Posting Exercise.

SchoolFinder Tool



<https://www.moe.gov.sg/schoolfinder>

MySkillsFuture Student Portal (Primary)



<https://go.gov.sg/exploreschool>



PUNGGOLGREEN
PRIMARY SCHOOL

PSLE SCORE RANGES FOR INDIVIDUAL SECONDARY SCHOOLS

The PSLE Score range refers to the PSLE Score of the first and last student admitted to a particular school in the previous year via the S1 Posting Exercise. This shows the range of student profiles who enter each school.

Will be
replaced
with posting
groups

	Affiliated	Non-affiliated
Express	-	6 - 15
Normal Academic	-	21 - 22
Normal Technical	-	25 - 27

Example

PSLE Score range of 2022

PSLE Score of the first student posted into the school in the respective posting group (PG)

PSLE Score of the last student posted into the school in the respective posting group (PG)
[i.e., the school's **Cut-Off Point (COP)**]



PUNGGOLGREEN
PRIMARY SCHOOL

PSLE SCORE RANGES (REFLECTING HCL) FOR INDIVIDUAL SECONDARY SCHOOLS

The PSLE Score range refers to the PSLE Score of the first and last student admitted to a particular school in the previous year via the S1 Posting Exercise. This shows the range of student profiles who enter each school.

Will be replaced with posting groups

	Affiliated	Non-affiliated
Express	-	5(D) - 12
Normal Academic	-	-
Normal Technical	-	-

Example

PSLE Score range of 2022
(reflecting HCL score)

Scoring for HMTL subjects:
D → Distinction
M → Merit
P → Pass

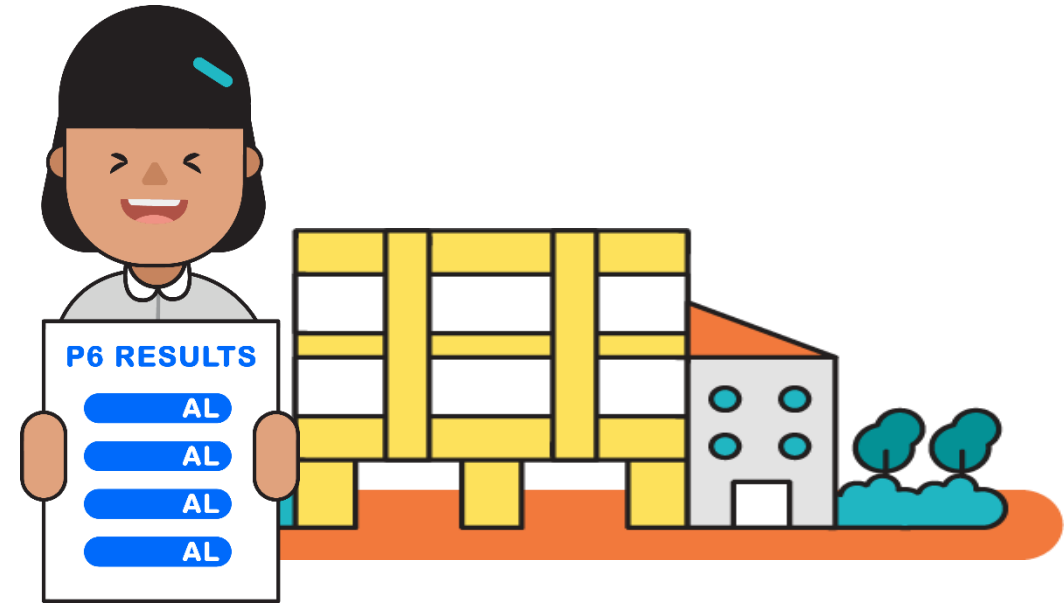
PSLE Score of the first student posted into the school in the respective posting group (PG)

PSLE Score of the last student posted into the school in the respective posting group (PG)
[i.e., the school's **Cut-Off Point (COP)**]



PUNGGOLGREEN
PRIMARY SCHOOL

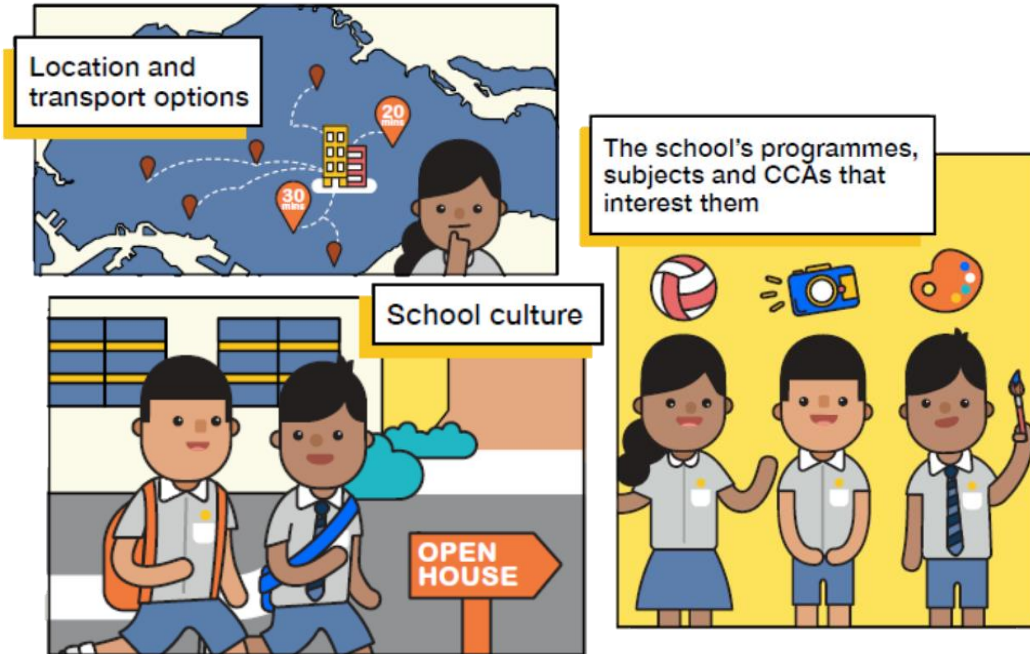
PREPARING FOR THE S1 POSTING EXERCISE



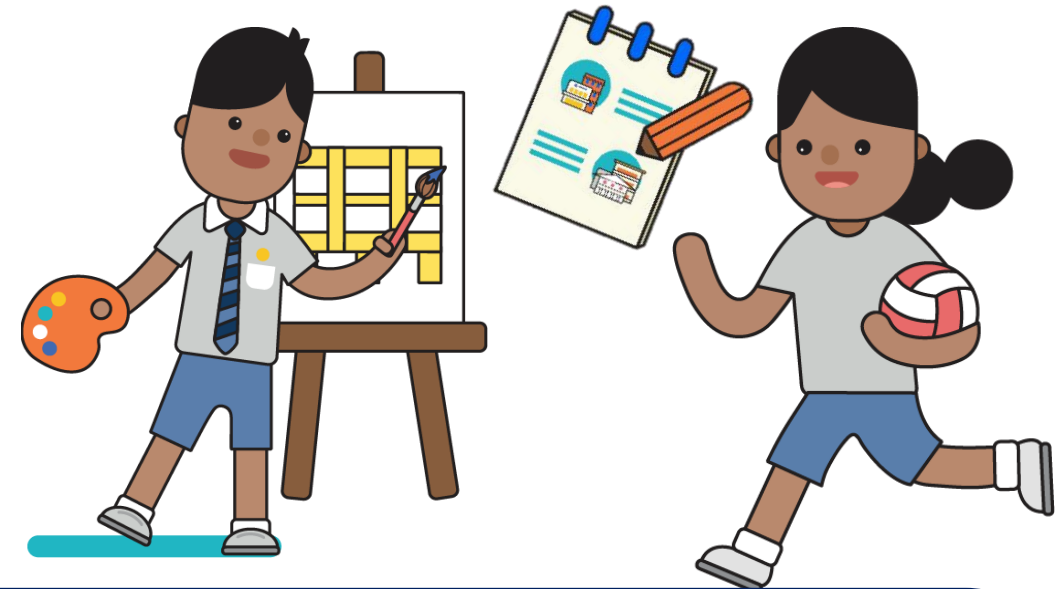
Use all 6 options with a range of Cut-off Points as this will increase your child's chances of being posted to a school of his/her choice.

Take reference from schools' PSLE Score ranges, which serves as a guide for you and your child to shortlist school choices. Consider at least 2-3 schools where your child's PSLE Score is better than the school's Cut-off Point.

PREPARING FOR THE S1 POSTING EXERCISE



Shortlist schools that offer programmes that cater to the your child's strengths and interests, and that provide suitable learning environments.



Rank your child's preferred school higher in the school choice order. This will increase your child's chances of being posted to that school, if tie-breakers are required.

DIRECT SCHOOL ADMISSION – SECONDARY (DSA–SEC)



PUNGGOLGREEN
PRIMARY SCHOOL

WHAT IS DSA-SEC?

- Direct School Admission for secondary schools (DSA-Sec) allows students to gain direct entry to certain secondary schools **based on their talent in sports, CCAs and specific academic areas**, before taking the PSLE.
- Enables students to enter academic and non-academic programmes in secondary schools that can develop the students in these areas (e.g. sports and games, aesthetics, leadership, uniform groups etc.)
- Every secondary school offers distinctive programmes and sets its own selection process and criteria to admit up to 20% of its students with talents who can be further developed by their programmes.



DSA-SEC SELECTION CRITERIA

Schools have different selection criteria, but in general, applicants must be able to demonstrate a high level of ability in that talent area.

For example, your child might have:

- represented the school in a CCA
- held a prominent role in a play or performance
- Shown talent in oratorical skills or creative writing
- held a leadership role in class or a CCA

Note: Academic results and non-academic school-based achievements will be shared automatically to the school that you have chosen



IS THE DSA-SEC RIGHT FOR MY CHILD?



Talent

commitment

Passion

If your child has specific **talents** which a school offers the DSA in, and is **passionate** about and **committed** to developing his/her strengths and interests...

DSA can support his/her development in that talent area.



WHO CAN APPLY?

All Primary 6 students can apply for DSA-Sec based on a wide-range of talents, including:

- Sports and games
- Visual, literary and performing arts
- Debate and public speaking
- Science, mathematics and engineering
- Languages and humanities
- Uniformed groups
- Leadership (for example, prefects)



WHICH SCHOOL SHOULD MY CHILD APPLY TO (DSA-SEC) ?

- Look for a school with **programmes that match your child's strengths and interests**
 - Schools are looking out for students whose interests and talents they can develop further.
 - Learn more about the secondary school's **pace of learning** and overall range of programmes
- **Get the latest information** about what each school offers by:
 - Visiting schools' websites
 - Attending schools' Open Houses to also experience the environment and their culture
 - Visiting the MOE's DSA-Sec website (will be updated around April)



WHAT ARE SCHOOLS LOOKING FOR?

→ The selection process differs across schools, and across different DSA-Sec categories.

→ In general, schools are looking for candidates with:

Talent, Passion and Commitment

- Schools may look at **achievements** and **participation** (e.g. in Junior Sports Academy).
- Schools may also conduct tests, trials or selection camps to identify students with **strengths, or strong fundamentals and potential** in particular areas.

Strong personal qualities

- Schools may look at CCA records and Values in Action (VIA) participation.
- Schools may also conduct interviews.

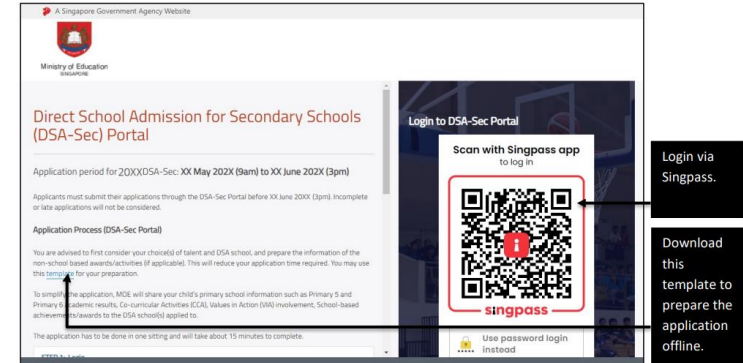
Good academic fit

- Schools may look at primary school results to ensure students can benefit from the school's pace of learning.

FEATURES OF DSA-SEC PORTAL

(ONLY ACCESSIBLE DURING THE DSA-SEC APPLICATION PERIOD: MAY TO EARLY JUNE)

- 1 Enter website <https://go.gov.sg/apply-dsa-sec>
- 2 Login using Singpass
- 3 Look for the child's particulars and click "APPLY" to start the application process.
- 4 Indicate 3 choices of talent areas (*Choice order DOES NOT matter*)
*Maximum of 2 choices can be used to apply to same school of 2 different talent areas.
- 5 Follow prompts on the website to proceed and submit the online application.
- 6 Download PDF copy of successful submission of application for your reference.



IF YOUR CHILD HAS A DSA CONFIRMED OFFER, DOES IT MEAN THAT HIS PSLE RESULTS WILL NOT MATTER?

Your child's PSLE results will still be **used to determine the secondary school posting group that he/she is eligible** for [i.e. PG1, PG2 or PG3]

Even if your child has a confirmed offer, he/she **must qualify for the posting group offered by the school** to be successfully admitted through the DSA.

Note:

If your child is admitted through DSA-Sec, they must commit to their chosen school for the duration of the programme. They are not allowed to transfer to another secondary school.



PUNGGOLGREEN
PRIMARY SCHOOL

DSA TIMELINE (TBC)



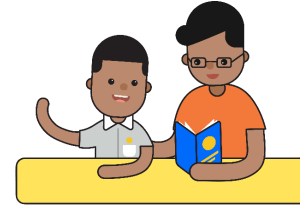
Jan - May



May-June



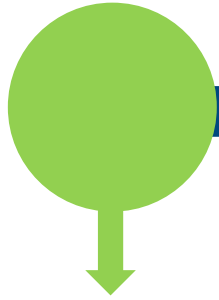
Mid-September



End-October

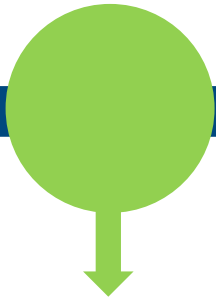


End-November



Explore
school
choices

Visit schools' websites for their selection process and schedule



Apply through
DSA-Sec Portal



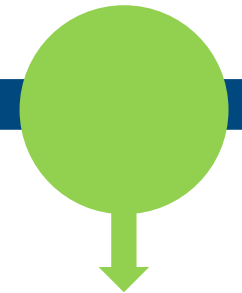
Attend e-interviews
and e-auditions

ONLY for shortlisted candidates.
Secondary schools will inform you of the DSA outcome by late September.



Select preferred
Secondary schools

Rank your preferred choices if you receive offer from multiple schools.



Receive school
allocation results
along with PSLE
results



PUNGGOLGREEN
PRIMARY SCHOOL

STRATEGIES TO ACHIEVE EXCELLENCE

- Set high expectations but encourage small progress and affirm good effort
- Plan your holidays
 - Extra lessons planned during last week of June holidays
 - Extra lessons during last 2 days of September holidays
- Set routines and adopt good habits such as setting limits to use of handphones, playing of computer games and getting a good night's sleep



STRATEGIES TO ACHIEVE EXCELLENCE

- Adopt a whole family approach and encourage a healthy lifestyle
- Work closely with your child's teachers
- Balance and manage tuition work (if any)



PUNGGOLGREEN
PRIMARY SCHOOL

Future-Ready Leaders With The Heart For Others

TIPS FOR PARENTS

Be open and flexible when discussing your child's preferences, needs and choices.

Manage your own expectations and do not project these expectations onto your child.

Have regular conversations with your child to understand more about his/her interests and aspirations.

Affirm your child and offer support when he/she shares his/her plans with you.



FIND OUT MORE ON THE PSLE-FSBB MICROSITE!



<https://go.gov.sg/pslefsbb>



PUNGGOLGREEN
PRIMARY SCHOOL

Future-Ready Leaders With The Heart For Others

OTHER RESOURCES

1

SchoolFinder Tool

SCHOOL
FINDER



<https://go.gov.sg/secschoolfinder>

2

“Welcome to Secondary School” video



<https://go.gov.sg/welcome-to-secondary-school>

3

ECG Parent Guide



<https://go.gov.sg/parent-guide>

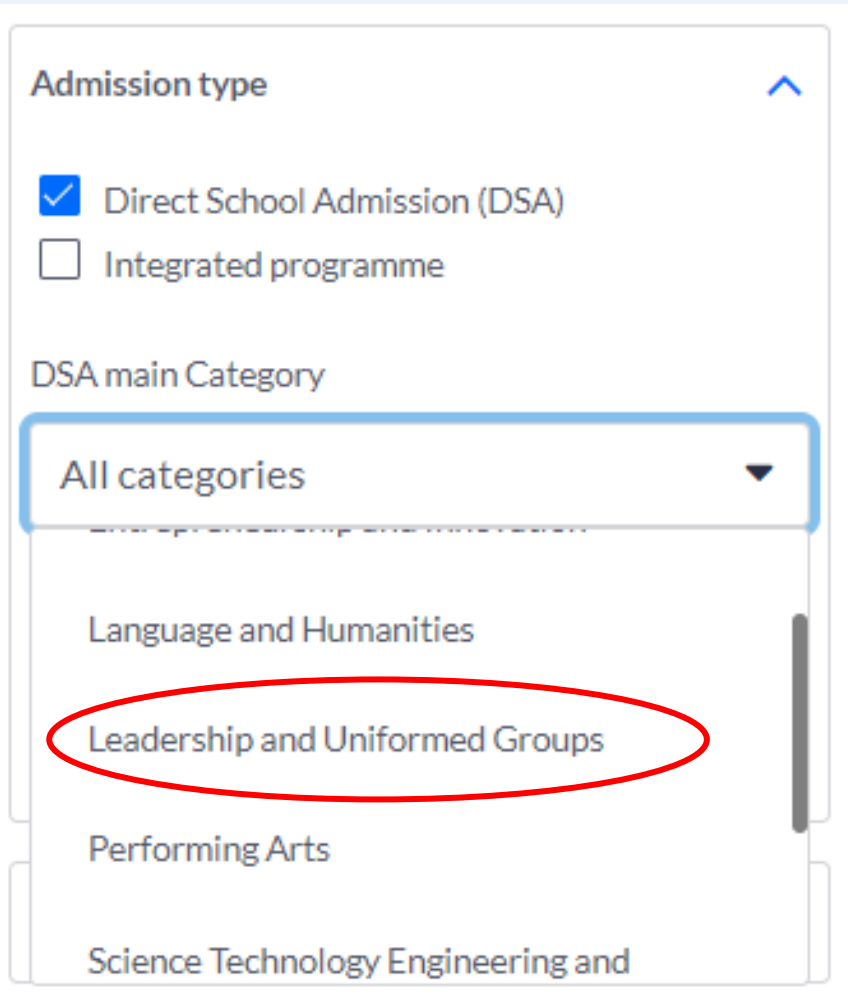


QUESTIONS / QUERIES CAPTURED THROUGH PG

Is there any DSA option for uniformed groups?

Yes!

DSA for uniformed groups will come under the leadership DSA category.



Admission type

☒ Direct School Admission (DSA)
☐ Integrated programme

DSA main Category

All categories

Language and Humanities

Leadership and Uniformed Groups

Performing Arts

Science Technology Engineering and

QUESTIONS / QUERIES CAPTURED THROUGH PG

If my child is offered a DSA-Sec place in secondary school, does he still need to meet the cut-off point for the secondary school's admission ?

To be successfully admitted to a school through DSA, your **child's PSLE results must qualify them for the PG offered** by the school.

Hence, PSLE result is important even if a child already has a confirmed offer for DSA application.

What is the schedule for P6 supplementary during June holidays?

It is **currently planned to take place during the last week of the June holidays**. Finer details on the June Holiday schedule will be shared at a later date.

QUESTIONS / QUERIES CAPTURED THROUGH PG

If the child's AL score is between 20 to 25, does it mean that it is difficult to enter the Secondary school through DSA even though he/she may have talent in that area?

Direct School Admission for secondary schools (DSA-Sec) seeks to broaden our recognition of talents and achievements beyond academic grades. Students can gain direct entry to certain secondary schools based on their talent in sports, CCAs and specific academic areas. Whether or not a child will be accepted through DSA depends on the secondary school profile and specific criteria.



QUESTIONS / QUERIES CAPTURED THROUGH PG

When you enter Secondary school through DSA, does it mean you cannot change CCA in Secondary school?

You are **expected to be committed to the CCA**. Students must commit to the chosen school for the duration of the programme. However, if the situation changes, you can always approach the secondary school for advice.

What kind of support will the school provide a child who is applying for DSA-Sec?

Depending on the DSA talent area applied for, the **school can offer support where applicable**:

DSA visual arts – School will support students in giving feedback to improve their portfolio

DSA Sports/performing arts (For a sport that is an offered CCA in PGPS) – Time and space may be made available to the student for his/her extra practice when preparing for try-outs/audition

QUESTIONS / QUERIES CAPTURED THROUGH PG

How many DSA-Sec vacancies are offered by the participating DSA-Sec schools?

Integrated Programme (IP) schools generally admits about **30%-35%** of their Secondary 1 IP intake through the DSA-Sec.

Other **non-IP schools** can admit up to **20%** of their Secondary 1 intake through DSA-Sec.

Specialised independent schools such as NUS High School of Mathematics and Science, School of the Arts (SOTA), School of Science and Technology, Singapore Sports School **can admit 100% of their student through the DSA-Sec.**

QUESTIONS / QUERIES CAPTURED THROUGH PG

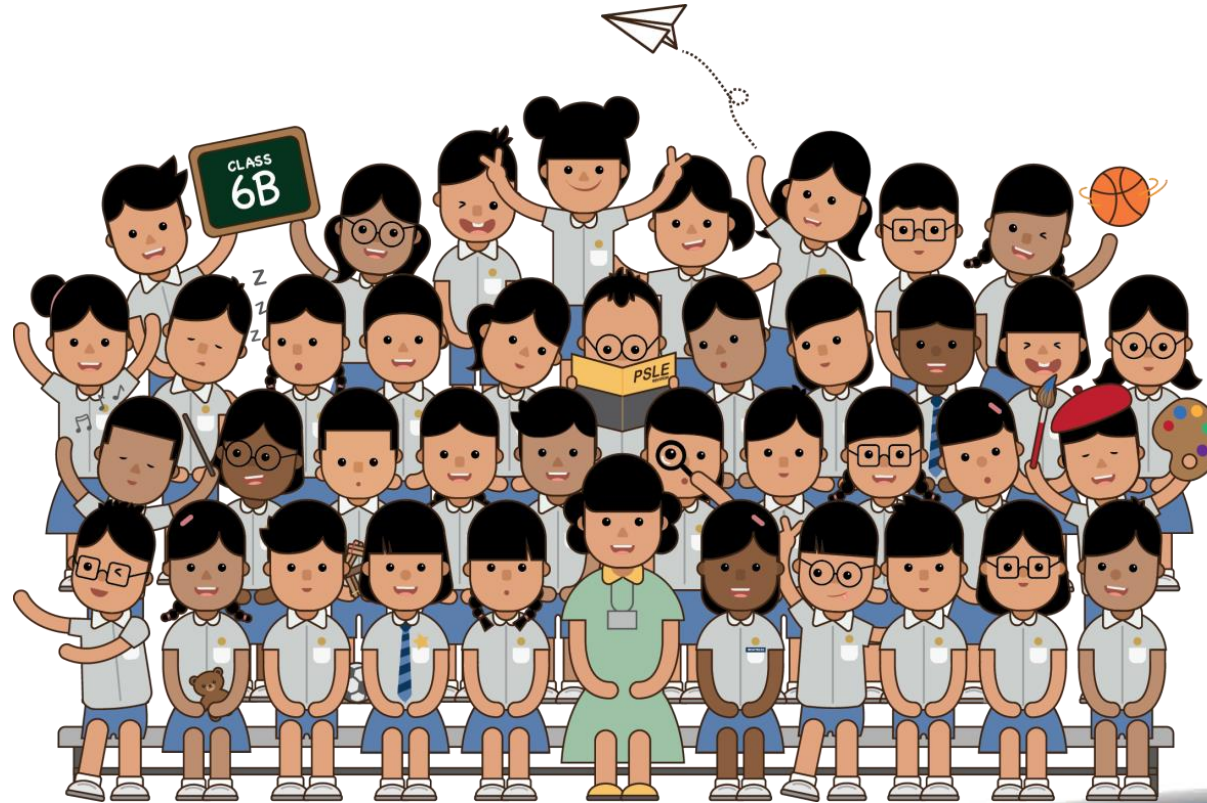
When applying for DSA, which school result is considered by the Secondary school? Do we need to provide proof?

Your child's primary school information will automatically be shared with the applied DSA-Sec school(s). This information includes your child's P5 and P6 academic results, and other information from P4 to P6, i.e. Co-curricular Activities (CCA), Values in Action (VIA) involvement, School-based achievements and awards such as Edusave awards, National School Games and Junior Sports Academy participation.

*You **do not** need to key in this information.

*Application will be done online through DSA-Sec Portal

THANK YOU &
HAVE A LOVELY WEEKEND AHEAD!



PUNGGOLGREEN
PRIMARY SCHOOL

Future-Ready Leaders With The Heart For Others