

# WELCOME TO PRIMARY 5 PARENTS ' BRIEFING

*24 March 2023*



**PUNGGOLGREEN**  
PRIMARY SCHOOL

Future-Ready Leaders With The Heart For Others

# OUTLINE OF TODAY ' S SHARING

1

Direct School Admission (DSA)

2

Updates on PSLE Scoring and  
S1 Posting Exercise



PUNGGOLGREEN  
PRIMARY SCHOOL

Future-Ready Leaders With The Heart For Others

# EVOLUTION OF SINGAPORE'S EDUCATION SYSTEM

Industrialisation



Skills/Capital Intensive



Knowledge Based



Innovation Driven  
(2012 Onwards)



Survival Driven  
(1959 – 1978)



Efficiency Driven  
(1979 – 1996)



Ability Based,  
Aspiration Driven  
(1997 – 2011)

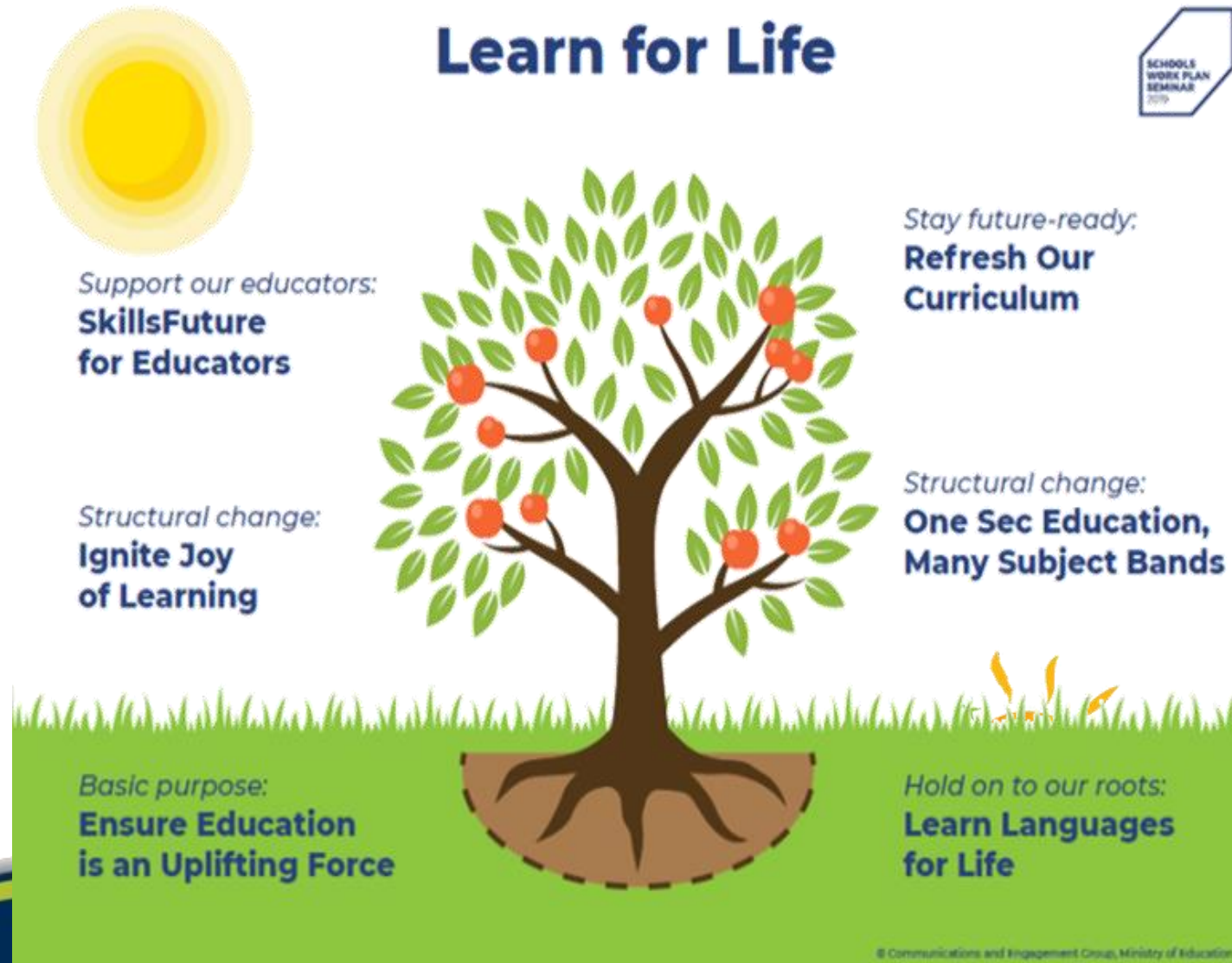


Student-centric,  
Values Driven  
(2012 Onwards)



# LEARN FOR LIFE

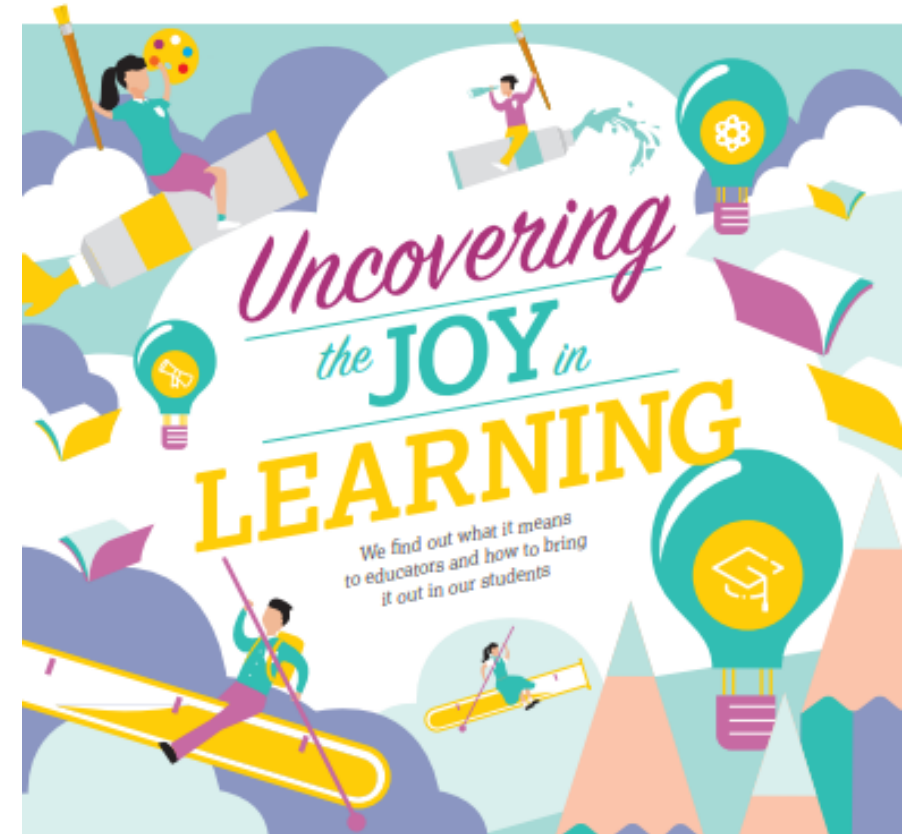
- New phase of our education system
  - **Develop** diverse **strengths** and **interests** of our students,
  - **Nurture** an **intrinsic motivation** to learn
  - **Ensure** every child has a **good start** in life and can **access opportunities** at every stage of their lives.





# NURTURING THE JOY OF LEARNING

- **Reduction of School-Based Assessment Load**
  - Holistic assessments in primary schools
  - Removal of mid-year exams for P3 to P6
- **Changes to PSLE Scoring**
  - Reduce overly-fine differentiation between students & unnecessary competition
- **Broadened Definition of Merit in Admissions**
  - Expansion of Direct School Admission (DSA) and refinement to DSA policy
  - Aptitude-based admissions in IHLs



# PRIMARY SCHOOL → SECONDARY SCHOOL

S1 Posting Exercise

**Choice**

**Choice**

Direct School  
Admission – Secondary  
(DSA – Sec)



**PUNGGOLGREEN**  
PRIMARY SCHOOL

# ENTERING A SECONDARY SCHOOL



## PSLE/S1 Posting Exercise

- Based on a student's **PSLE score (Total AL score)**
- **Most students enter secondary schools this way**



## DSA-Sec

- Based on a diverse range of **talents and achievements in specific academic subjects or non-academic areas, beyond what the PSLE recognizes**
- Allows students to **access school programmes to develop their talents**

# DIRECT SCHOOL ADMISSION – SECONDARY ( DSA–SEC)





# WHAT IS DSA-SEC?

Direct School Admission for secondary schools (DSA-Sec) allows students to gain direct entry to certain secondary schools based on their talent in sports, CCAs and specific academic areas, before taking the PSLE.



DSA-SEC IS ONLY IN PRIMARY 6.  
SO, WHY HAVE THE BRIEFING NOW?



PUNGGOLGREEN  
PRIMARY SCHOOL

# IS THE DSA-SEC RIGHT FOR MY CHILD?



Talent

commitment

Passion

If your child has specific **talents** which a school offers the DSA in, and is **passionate** about and **committed** to developing his/her strengths and interests...

**DSA can support his/her development in that talent area.**



# WHAT ARE SCHOOLS LOOKING FOR?

→ The selection process differs across schools, and across different DSA-Sec categories.

→ In general, schools are looking for candidates with:

## Talent, Passion and Commitment

- Schools may look at **achievements** and **participation** (e.g. in Junior Sports Academy).
- Schools may also conduct tests, trials or selection camps to identify students with **strengths, or strong fundamentals and potential** in particular areas.

## Strong personal qualities

- Schools may look at CCA records and Values in Action (VIA) participation.
- Schools may also conduct interviews.

## Good academic fit

- Schools may look at primary school results to ensure students can benefit from the school's pace of learning.



# ELIGIBILITY

**Primary 6 students can apply for DSA-Sec based on a wide-range of talents, including:**

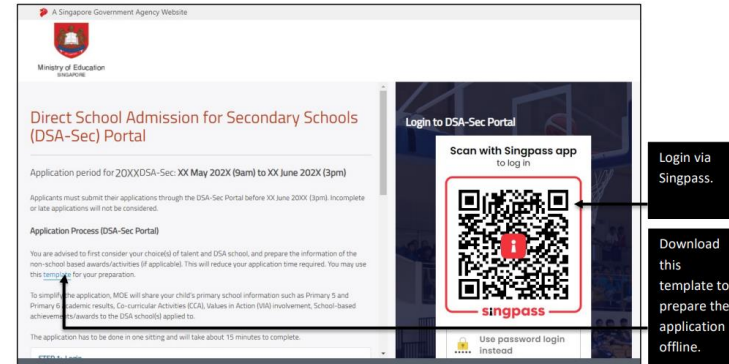
- Sports and games
- Visual, literary and performing arts
- Debate and public speaking
- Science, mathematics and engineering
- Languages and humanities
- Uniformed groups
- Leadership (for example, prefects)



# FEATURES OF DSA-SEC PORTAL

( ONLY ACCESSIBLE DURING THE DSA-SEC APPLICATION PERIOD: MAY TO EARLY JUNE)

- 1 Enter website <https://go.gov.sg/apply-dsa-sec>
- 2 Login using Singpass
- 3 Look for the child's particulars and click "APPLY" to start the application process.
- 4 Indicate 3 choices of talent areas (*Choice order DOES NOT matter*)  
\*Maximum of 2 choices can be used to apply to same school of 2 different talent areas.
- 5 Follow prompts on the website to proceed and submit the online application.
- 6 Download PDF copy of successful submission of application for your reference.



# POSSIBLE DSA OUTCOMES

→ **Confirmed Offer (CO)** – Your child have a place reserved in the school.

→ **Waitlist (WL)** – This means your child will only be considered if other students with Confirmed Offer choose not to go to that school during the School Preference stage. Allocation will be based on students' rank on the school's Wait List.

→ **Unsuccessful** – If your child is unsuccessful in all their applications, but still wish to enter the school your child applied for in the DSA, your child can consider them again during the Secondary 1 Posting (S1 Posting) Exercise based on his/her PSLE results.



# PREPARATION STARTS NOW

**Schools have different selection processes but, in general, applicants must be able to demonstrate their talent, potential, passion and character through their school track record and online DSA applications. For example, your child might have:**

- Represented the school in a CCA.
- Held a role in a play or performance.
- Done well in a subject such as mathematics or creative writing.
- Held a leadership role in class or a CCA.

## **Things to note**

If your child is admitted through DSA-Sec, they must commit to their chosen school for the duration of the programme. They are not allowed to transfer to another secondary school.



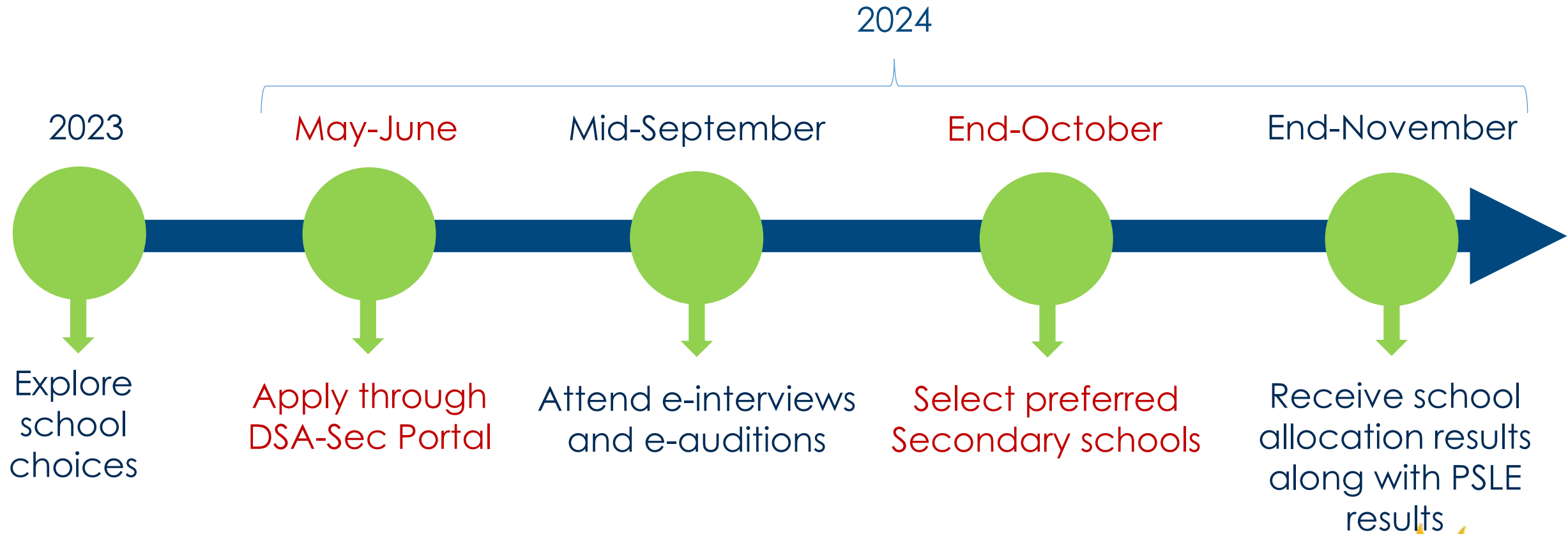
# PREPARATION STARTS NOW

**So, it is important to start early;**

1. Discuss with your child on offered programmes and activities your child is talented in
2. Shortlist possible schools that matches your child's talent
3. Join a school-based CCA and stay with it till Primary 6, **or**
4. Join an external committee/ performance group and keep the school posted
5. Start a portfolio and keep a documentation of all your child's achievements

Note: No testimonial from primary school required


# DSA TIMELINE (TBC)



# FOR MORE INFORMATION ON DSA


<https://www.moe.gov.sg/secondary/dsa>

[SchoolFinder](#) [CourseFinder](#) [Academic calendar](#) [Self-help tools](#) [My shortlisted \(0\)](#)



Ministry of Education  
SINGAPORE

Education Levels ▾ Financial matters ▾ Education in SG ▾ News Careers About MOE



[MOE](#) > [SECONDARY](#) > Last Updated: 15 December 2021

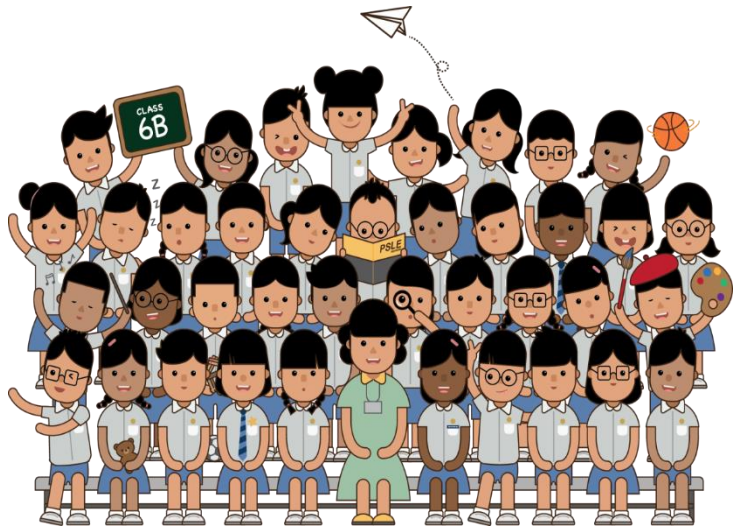
## Direct School Admission for secondary schools (DSA-Sec)

*P6 students can seek admission to certain secondary schools based on their talent in sports, CCAs and specific academic areas. Learn if your child is eligible and how to apply.*



**PUNGGOLGREEN**  
PRIMARY SCHOOL

# UPDATES ON PSLE SCORING AND S1 POSTING EXERCISE



PUNGGOLGREEN  
PRIMARY SCHOOL

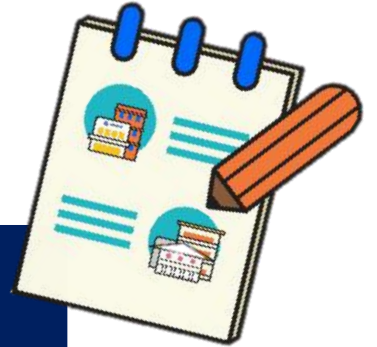


# WHAT IS THE INTENT OF THE PSLE?



**A useful checkpoint at the end of primary school**

**A fair way to determine secondary school posting**



Over the years, we have been changing the education system to help our students discover and develop their strengths and interests, while moving away from an over-emphasis on academic results. Our PSLE Scoring changes reduce an over-emphasis on academic results by:

1

Reducing fine differentiation of students' examination results at a young age.

2

Recognising a student's level of achievement, regardless of how his/her peers have done.

3

Encouraging families to choose secondary schools holistically based on students' strengths, interests and abilities.

# HOW THE PSLE SCORING SYSTEM WORKS



## FROM T-SCORE TO SCORING BANDS



PUNGGOLGREEN  
PRIMARY SCHOOL

# FROM T-SCORE TO SCORING BANDS

## a) Reduces fine differentiation of students' examination results at a young age

- Students with similar scores in each subject are grouped into wider scoring bands measured in 8 ALs.

## b) Reflects a student's individual level of achievement

- Students' ALs for each subject reflect their level of achievement, rather than how they have performed relative to their peers.

AL	RAW MARK RANGE
1	≥ 90
2	85 – 89
3	80 – 84
4	75 – 79
5	65 – 74
6	45 – 64
7	20 – 44
8	< 20



# 4 SUBJECT ALS WILL BE ADDED TO FORM THE OVERALL PSLE SCORE

- The PSLE Score can range from 4 to 32, with 4 being the best possible total score.
- Students are placed in secondary school based on their school choice order and school's cut-off AL score.

## AN EXAMPLE OF HOW A STUDENT'S PSLE SCORE IS CALCULATED



English Language	AL3
Mother Tongue Language	AL2
Mathematics	AL1
Science	AL2

**PSLE Score: 8**



# GRADING OF FOUNDATION LEVEL SUBJECTS

- Foundation subject grades are graded in scoring bands from **AL A to C**.
- To derive a student's overall PSLE Score for S1 Posting, AL A to AL C for Foundation level subjects are **mapped to AL 6 to AL 8 of Standard level subjects respectively**.
- Similar to the PSLE T-score system, this mapping is based on the learning and assessment load of the subjects and informs students of how ready they are for the curriculum in secondary school.

FOUNDATION LEVEL AL	FOUNDATION RAW MARK RANGE	EQUIVALENT STANDARD LEVEL AL
A	75 – 100	6
B	30 – 74	7
C	< 30	8

# GRADING OF MOTHER TONGUE EXEMPT STUDENTS







- For students exempted from MTL, due to extenuating circumstances, an MTL score will be assigned to them to get their overall PSLE score using a similar system as T-score:
  - Take reference from peers with similar scores for English, Mathematics and Science scores
  - Maintain parity of treatment with students who take Foundation MTL (who will score between AL 6 to AL 8)
- Hence, students exempted from MTL will receive an MTL score between AL 6 to AL 8.

# USING HCL FOR ADMISSION INTO SAP SCHOOLS

- Students with better PSLE score will be posted first even if the student has not taken HCL in primary schools.
- ONLY if 2 students with same PSLE score apply for the same SAP school, student with better HCL will be posted first.

Students who obtained a Distinction/Merit/Pass for HCL at the PSLE and an overall PSLE Score of 14 or better will receive a posting advantage when applying to SAP schools.

Students will be considered for admission to SAP schools in the following order:

1st		7	NO HCL
2nd		8	DISTINCTION
3rd		8	MERIT
4th		8	PASS
5th		8	NO HCL
6th		9	DISTINCTION

Students with better PSLE Scores will be posted first, even if they did not take HCL.

Amongst students with the same PSLE Score, those with better HCL grades will be posted first.



# ELIGIBILITY CRITERIA FOR HIGHER MOTHER TONGUE LANGUAGE ( HMTL)

## ELIGIBILITY CRITERIA FOR HMTL

**(i) An overall PSLE Score of 8 or better**

or

**(ii) An overall PSLE Score of 9 to 14 (inclusive); and attain**

- **AL 1 / AL 2 in MTL or**
- **Distinction / Merit in HMTL**

- The eligibility criteria for taking HMTL takes reference from past criteria.
- It ensures students can cope with the higher academic load.
- Secondary schools continue to have the flexibility to offer HMTL to students who do not meet the criteria if they:
  - have high ability and interest in MTL, and
  - are able to cope with the learning load required.



# CRITERIA FOR PROMOTION TO SECONDARY SCHOOL

## Subjects taken at standard level

Total AL Score  
30 or lower

and

\*AL 7 or better in both  
English **and** Math  
(\*ONLY if total AL falls in 26 to  
30 range)



Progress to Mainstream  
Secondary School

## Subjects taken at Foundation level

Total AL Score  
30 or lower

and

AL B or better in both  
English and Math



Progress to Mainstream  
Secondary School

Similar to the T-score system, students who are not eligible to progress to mainstream secondary school, would be offered the option to repeat the PSLE, or progress to NorthLight School or Assumption Pathway School with their principal's endorsement.



# FIND OUT MORE ON THE PSLE-FSBB MICROSITE!



<https://go.gov.sg/pslefsbb>



# OTHER RESOURCES

## SchoolFinder Tool

SCHOOL  
FINDER



<https://go.gov.sg/secschoolfinder>

## ECG Parent Guide



<https://go.gov.sg/parent-guide>

# QUESTIONS / QUERIES CAPTURED THROUGH PG

Is it a must for my child to go through DSA?

Direct School Admission for secondary schools (DSA-Sec) seeks to broaden our recognition of talents and achievements beyond academic grades. Students can gain direct entry to certain secondary schools based on their talent in sports, CCAs and specific academic areas. However, **the DSA is not a pathway that suits every student**. To determine if DSA is an appropriate pathway for your child, you should **carefully consider your child's strengths and interests**, and the school's programmes and their ability to develop specific talent.

Students who do not wish to take part in DSA exercise will apply for secondary schools during the Secondary 1 (S1) Posting exercise that is based on the student's academic performance.



# QUESTIONS / QUERIES CAPTURED THROUGH PG

When you enter Secondary school through DSA, does it mean you cannot change CCA in Secondary school?

You are **expected to be committed to the CCA**. Students must commit to the chosen school for the duration of the programme. However, if the situation changes, you can always approach the secondary school for advice.

What kind of support will the school provide a child who is applying for DSA-Sec?

Depending on the DSA talent area applied for, the **school can offer support where applicable**:

DSA visual arts – School will support in giving feedback and suggestions to improve their portfolio

DSA Sports/performing arts (For a sport that is an offered CCA in PGPS) – Time and space may be made available to the student for his/her extra practice when preparing for try-outs/audition.

# QUESTIONS / QUERIES CAPTURED THROUGH PG

How many DSA applications can my child opt for?

You can indicate **up to 3 choices and 3 talent areas** and may indicate **up to 2 talent areas for the same school**.

If you want to apply for 2 talent areas at the same school, you must indicate both as separate choices.

**Note:** *Do consider your choices carefully and manage your child's time and effort participating in multiple trials and interviews.*



# QUESTIONS / QUERIES CAPTURED THROUGH PG

When applying for DSA, which school result is considered by the Secondary school? Do we need to provide proof?

Your child's primary school information will automatically be shared with the applied DSA-Sec school(s). This information includes your child's P5 and P6 academic results, and other information from P4 to P6, i.e. Co-curricular Activities (CCA), Values in Action (VIA) involvement, School-based achievements and awards such as Edusave awards, National School Games and Junior Sports Academy participation.

\*You **do not** need to key in this information.

\*Application will be done online through DSA-Sec Portal

# QUESTIONS / QUERIES CAPTURED THROUGH PG

Can my child use certification obtained from outside to support the DSA-Sec application?

**Yes.** Certifications and participation obtained from both school and outside events that are relevant to the DSA talent area applied can be uploaded into the portal for the secondary school's consideration.

For PSLE 2024, how would we know what are the cut off points for secondary posting?

The most updated information of school's cut-off points will be made **available in the MOE's SchoolFinder tool.**



# QUESTIONS / QUERIES CAPTURED THROUGH PG

If my child is offered a DSA-Sec place in secondary school, does he still need to meet the cut-off point for the secondary school's admission ?

To be successfully admitted to a school through DSA, your **child's PSLE results must qualify them for the course offered** by the school.

Hence, PSLE result is important even if a child already has a confirmed offer for DSA application.

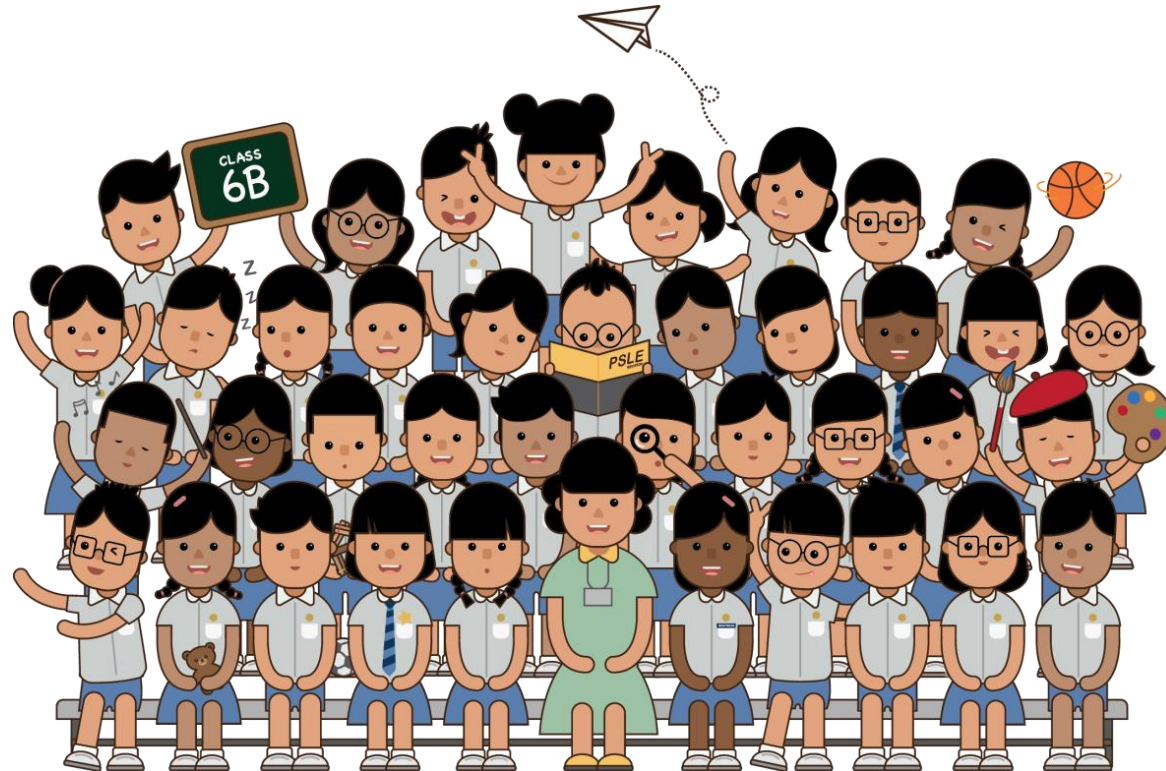
How many DSA-Sec vacancies are offered by the participating DSA-Sec schools?

**Integrated Programme (IP) schools** generally admits about **30%-35%** of their Secondary 1 IP intake through the DSA-Sec.

Other **non-IP schools** can admit up to **20%** of their Secondary 1 intake through DSA-Sec.

**Specialised independent schools** such as NUS High School of Mathematics and Science, School of the Arts (SOTA), School of Science and Technology, Singapore Sports School **can admit 100% of their student through the DSA-Sec.**

# THANK YOU FOR YOUR TIME!



**PUNGGOLGREEN**  
PRIMARY SCHOOL

Future-Ready Leaders With The Heart For Others