

WELCOME TO PGPS Primary 6 Parents' Briefing

Monday, 3 February 2025



Future-Ready Leaders with the Heart for Others



PUNGGOLGREEN
PRIMARY SCHOOL

OUTLINE OF TODAY'S SHARING

- 1 Intent of PSLE
- 2 The PSLE Scoring System
- 3 The Secondary 1 Posting System and Full Subject-Based Banding (Secondary)
- 4 School Choice Journey
- 5 Direct School Admission (Secondary)
- 6 Being a P.S.L.E. Parent: Strategies to Support Your Child

THE PSLE SCORING SYSTEM



INTENT OF THE PSLE

1. A useful checkpoint at the end of primary school

2. Provides opportunity for students to determine their strengths, interests and areas for growth

3. A fair tool to determine secondary school posting



KEY DIFFERENCES

PSLE T-SCORE

- Reflects how well students have done **relative to their peers**
- Over **200 possible T-Scores** - fewer students will have the same T-score
- **Fewer schools with the same cut-off point**



PSLE AL SCORE

- Recognises a student's level of achievement, **regardless of how their peers have done**
- **29 possible PSLE Scores** - more students will have the same PSLE Score
- **More schools with the same cut-off point**
- Students are encouraged to select schools **based on their strengths and interests**

4 SUBJECT ALS ARE ADDED TO FORM THE PSLE SCORE

- The PSLE Score can range from 4 to 32, with 4 being the best possible total score.
- Students are placed in secondary school based on their **school choice order** and **school's cut-off point**.

AN EXAMPLE OF HOW A
STUDENT'S PSLE SCORE
COMPUTATED



English Language	AL3
Mother Tongue Language	AL2
Mathematics	AL1
Science	AL2
PSLE Score: 8	



GRADING OF SUBJECTS

STANDARD LEVEL SUBJECTS

AL	RAW MARK RANGE
1	≥ 90
2	85 – 89
3	80 – 84
4	75 – 79
5	65 – 74
6	45 – 64
7	20 – 44
8	< 20

There are 8 ALs, with **AL 1** being the best.

FOUNDATION LEVEL SUBJECTS

FOUNDATION LEVEL AL	FOUNDATION RAW MARK RANGE	EQUIVALENT STANDARD LEVEL AL
A	75 – 100	6
B	30 – 74	7
C	< 30	8

Foundation subject grades are graded in scoring bands from **AL A to C**, which are mapped to **AL 6 to AL 8** of Standard level subjects respectively.

GRADING OF MOTHER TONGUE LANGUAGE EXEMPT STUDENTS

- For students exempted from MTL, due to extenuating circumstances, an MTL score will be assigned to them to get their overall PSLE score using a similar system as T-score:
 - Take reference from peers with similar scores for English, Mathematics and Science scores
 - Maintain parity of treatment with students who take Foundation MTL (who will score between AL 6 to AL 8)
- Hence, students exempted from MTL will receive an MTL score between **AL 6 to AL 8.**



CRITERIA FOR PROMOTION TO SECONDARY SCHOOL

Subjects taken at Standard level

Total AL Score
30 or lower

and

*AL 7 or better in
both **English** and **Math**
(*ONLY if total AL falls in 26
to 30 range)



Progress to Mainstream
Secondary School

Subjects taken at Foundation level

Total AL Score
30 or lower

and

AL B or better in both
English and **Math**



Progress to Mainstream
Secondary School

Students who are not eligible to progress to mainstream secondary school, would be offered the option to repeat the PSLE, or progress to NorthLight School or Assumption Pathway School with their principal's endorsement.

ELIGIBILITY CRITERIA FOR HIGHER MOTHER TONGUE LANGUAGE (HMTL)

ELIGIBILITY CRITERIA FOR HMTL

(i) An overall PSLE Score of 8 or better

or

(ii) An overall PSLE Score of 9 to 14 (inclusive); and attain

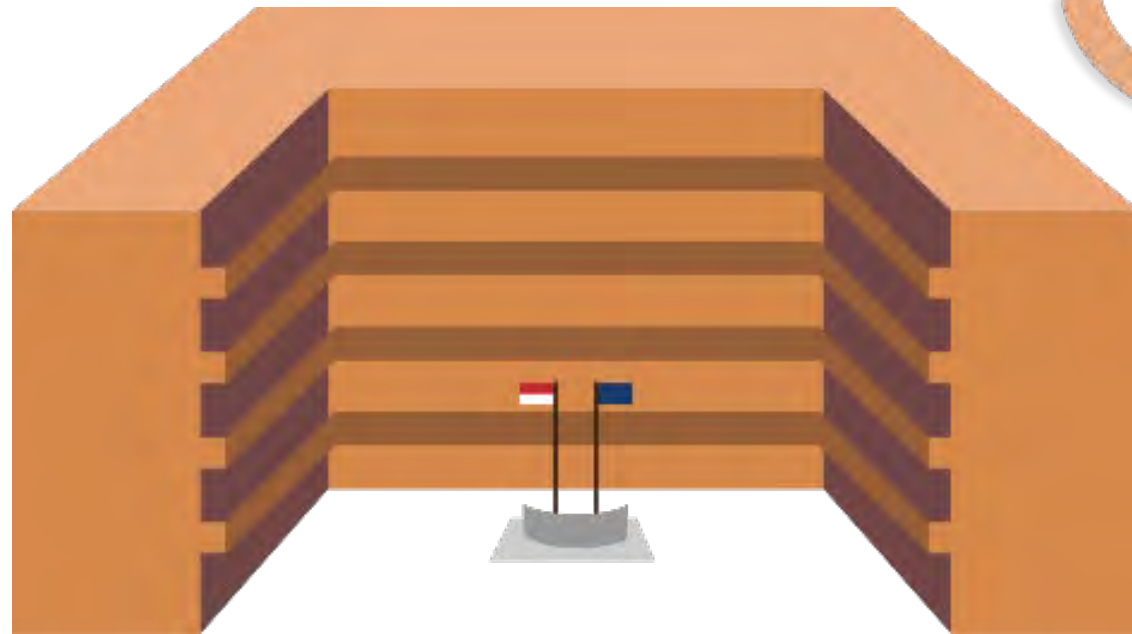
- **AL 1 / AL 2 in MTL or**

- **Distinction / Merit in HMTL**

- The eligibility criteria for taking HMTL takes reference from past criteria.
- It ensures students can cope with the higher academic load.
- Secondary schools continue to have the flexibility to offer HMTL to students who do not meet the criteria if they:
 - have high ability and interest in MTL, and
 - are able to cope with the learning load required.



THE S1 POSTING SYSTEM



CHOICE ORDER OF SCHOOL MATTERS



- Students have six choices in selecting their secondary schools.
- Students will be posted to a secondary school based on academic merit, i.e., PSLE Score, and their school choice order.
- If there are two or more students with the same PSLE Score vying for the last remaining place(s) in a school, the following **tie-breakers** will be used in the following order:

1. CITIZENSHIP

2. CHOICE ORDER OF SCHOOLS

- Recognises the different considerations that families have while making school choices.

3. COMPUTERISED BALLOTING



HOW THE TIEBREAKERS WORK (SIMPLIFIED EXAMPLE)

Jane

Singapore
Citizen

16 pts

SCHOOL CHOICES:

- 1) Sch A
- 2) Sch ...
- 3) Sch ...
- 4) Sch ...



Bryan

Singapore
Citizen

20 pts

SCHOOL CHOICES:

- 1) Sch B
- 2) Sch ...
- 3) Sch ...
- 4) Sch ...



Mary

Singapore
Citizen

20 pts

SCHOOL CHOICES:

- 1) Sch A
- 2) Sch B
- 3) Sch C
- 4) Sch ...



Alan

Permanent
Resident

20 pts

SCHOOL CHOICES:


- 1) Sch A
- 2) Sch B
- 3) Sch D
- 4) Sch ...



How will the 4 students be posted to the secondary schools?


Jane
Singapore Citizen
16 pts

SCHOOL CHOICES:
1) Sch A
2) Sch ...
3) Sch ...
4) Sch ...




Bryan
Singapore Citizen
20 pts

SCHOOL CHOICES:
1) Sch B
2) Sch ...
3) Sch ...
4) Sch ...




Mary
Singapore Citizen
20 pts

SCHOOL CHOICES:
1) Sch A
2) Sch B
3) Sch C
4) Sch ...



Alan
Permanent Resident
20 pts

SCHOOL CHOICES:
1) Sch A
2) Sch B
3) Sch D
4) Sch ...



- Students with better PSLE Scores will be posted first.
- Jane has a better PSLE score than Mary and Alan. She will be posted first, to School A.



Jane

Singapore
Citizen

16 pts

SCHOOL CHOICES:

- 1) Sch A
- 2) Sch ...
- 3) Sch ...
- 4) Sch ...



Bryan

Singapore
Citizen

20 pts

SCHOOL CHOICES:

- 1) Sch B
- 2) Sch ...
- 3) Sch ...
- 4) Sch ...



Mary

Singapore
Citizen

20 pts

SCHOOL CHOICES:

- 1) Sch A
- 2) Sch B
- 3) Sch C
- 4) Sch ...



Alan

Permanent
Resident

20 pts

SCHOOL CHOICES:

- 1) Sch A
- 2) Sch B
- 3) Sch D
- 4) Sch ...



Tie-breaker #1 Citizenship

- Bryan, Mary, and Alan have the same score.
- As Jane has taken the last available place in School A, **Bryan, Mary and Alan will vie for the last available place in their next choice, School B.**
- Bryan and Mary are **Singapore Citizens**. They will have priority to enter School B.
- Alan will be tie-broken out as he is a Permanent Resident. He will be considered for his next choice, School D.



Jane

Singapore
Citizen

16 pts

SCHOOL CHOICES:

- 1) Sch A
- 2) Sch ...
- 3) Sch ...
- 4) Sch ...



Bryan

Singapore
Citizen

20 pts

SCHOOL CHOICES:

- 1) Sch B
- 2) Sch ...
- 3) Sch ...
- 4) Sch ...



Mary

Singapore
Citizen

20 pts

SCHOOL CHOICES:

- 1) Sch A
- 2) Sch B
- 3) Sch C
- 4) Sch ...



Alan

Permanent
Resident

20 pts

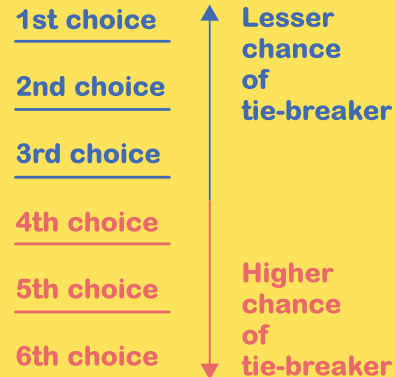
SCHOOL CHOICES:

- 1) Sch A
- 2) Sch B
- 3) Sch D
- 4) Sch ...



Tie-breaker #2 Choice Order of Schools

- After considering citizenship, because Bryan ranked School B higher than Mary, he will be posted to School B.
- Since Bryan has taken the last place in School B, Mary will be considered for her next choice, School C.









It is important to shortlist schools that can develop your child's strengths and interests.



USING HCL FOR ADMISSION INTO SAP SCHOOLS

Students who obtained a Distinction/Merit/Pass for HCL at the PSLE and an overall PSLE Score of 14 or better will receive a posting advantage when applying to SAP schools.

Students will be considered for admission to SAP schools in the following order:

1st		7	NO HCL	Students with better PSLE Scores will be posted first, even if they did not take HCL.
2nd		8	DISTINCTION	
3rd		8	MERIT	Amongst students with the same PSLE Score, those with better HCL grades will be posted first.
4th		8	PASS	
5th		8	NO HCL	
6th		9	DISTINCTION	



- Students with better PSLE score will be posted first even if the student has not taken HCL in primary schools.
- ONLY if 2 students with same PSLE score apply for the same SAP school, student with better HCL will be posted first.



PSLE SCORE RANGES FOR INDIVIDUAL SECONDARY SCHOOLS



PSLE SCORE RANGES FOR INDIVIDUAL SECONDARY SCHOOLS

The PSLE Score range refers to the PSLE Score of the first and last student admitted to a particular school in the previous year via the S1 Posting Exercise. This shows the range of student profiles who enter each school.

	Affiliated	Non-affiliated
Posting Group 3	-	7 - 15
Posting Group 2	-	21 - 23
Posting Group 1	-	25 - 26

Example

PSLE Score range of 2024

PSLE Score of the first student posted into the school in the respective posting group (PG)

PSLE Score of the last student posted into the school in the respective posting group (PG) [i.e., the school's Cut-Off Point (COP)]



PSLE SCORE RANGES (REFLECTING HCL GRADES) FOR ADMISSION TO SAP SCHOOLS

If the first or last student **did not take or pass HCL**, no HCL grades will be shown.

	Affiliated	Non-affiliated
Integrated Programme	-	4(D) - 7(M)
Posting Group 3	8(D) - 14	5(D) - 9
Posting Group 2	-	-
Posting Group 1	-	-

Example

PSLE Score range of 2024
(reflecting HCL Grade)

HCL Grade:

D → Distinction

M → Merit

P → Pass




PSLE Score of the first student
posted into the school in the
respective posting group (PG)

PSLE Score of the last student posted into the
school in the respective posting group (PG)
[i.e., the school's Cut-Off Point (COP)]



PSLE SCORE RANGES FOR ALL SECONDARY SCHOOLS

- Use the PSLE Score ranges as a reference alongside other important factors, such as the school's distinctive programmes, Co-Curricular Activities (CCA), culture, ethos, and proximity to home when shortlisting school choices that would best fit your child's educational needs.
- **The 2024 PSLE Score ranges for individual secondary schools will be available for your reference on <https://moe.gov.sg/schoolfinder> and <https://go.gov.sg/exploreschools>.** They reflect the PSLE scores of the student posted into these schools at the 2024 S1 Posting Exercise.
- A school's **PSLE Score range** (including Cut-Off-Point) for a particular year is not pre-determined before the posting, and **may vary from year to year**, depending on the current cohort's PSLE results and their school choices in the current year's S1 Posting Exercise.

 <p>SchoolFinder Tool</p>  <p>https://www.moe.gov.sg/schoolfinder</p>	<p>MySkillsFuture Student Portal (Primary)</p>  <p>https://go.gov.sg/exploreschools</p>
--	---



FULL SUBJECT BASED BANDING (SBB) (SECONDARY)

ONE SECONDARY EDUCATION
MANY SUBJECT BANDS



EVOLUTION OF OUR EDUCATION SYSTEM

Industrialisation
(1959-1978)

Skills/Capital-Intensive
(1979-1996)

Knowledge-Based
(1997-2011)

Innovation-Driven
(2012-2019)

Future Economy
(2020 onwards)



Survival-Driven

Efficiency-Driven

**Ability-based,
Aspiration-Driven**

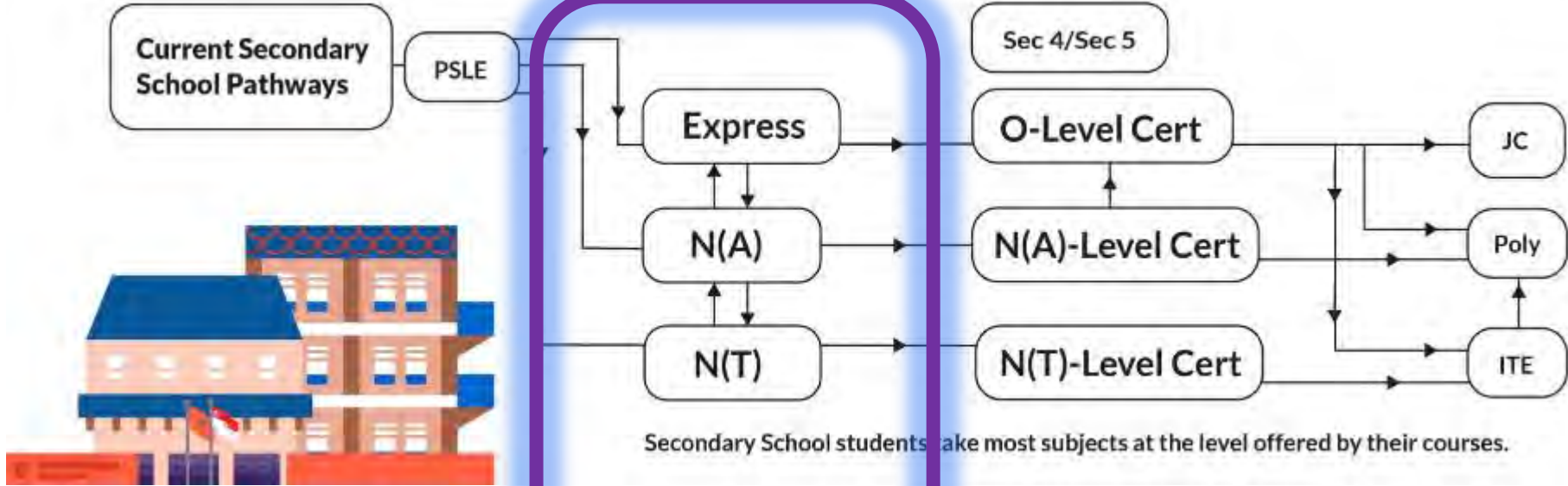
**Student-Centric,
Values-Driven**

Learn for Life

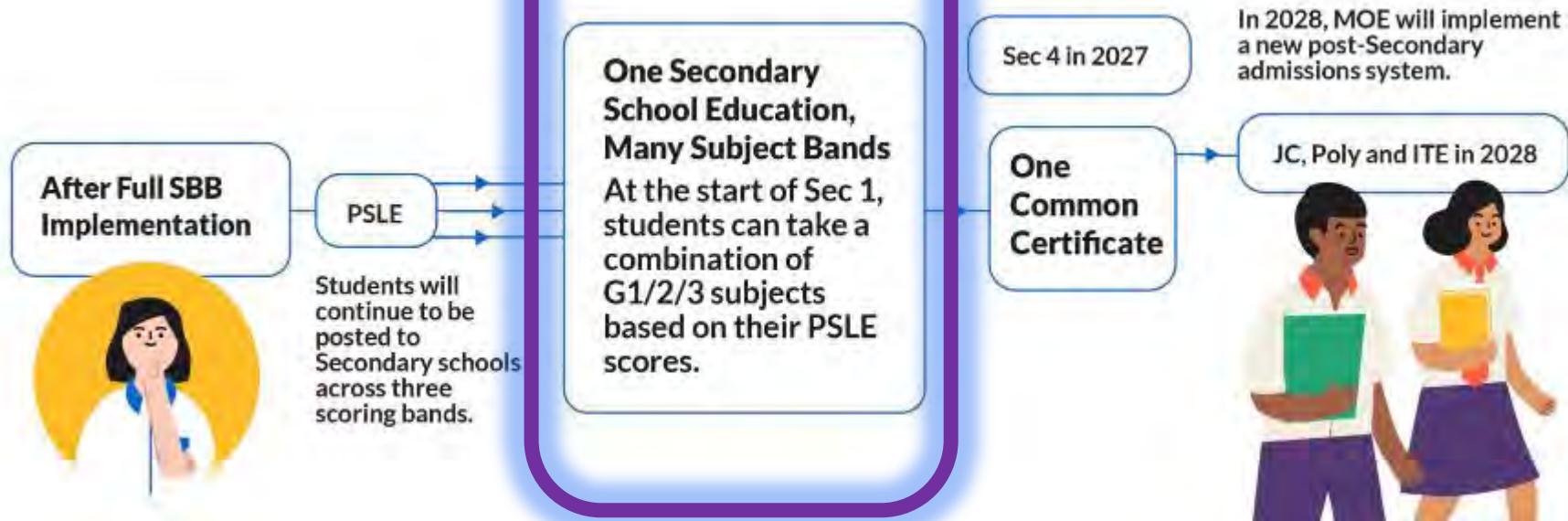
Our future economy is dynamic and evolving. We must nurture lifelong learners with the confidence to navigate our increasingly complex world and contribute towards a better future.

ONE SECONDARY EDUCATION, MANY SUBJECT BANDS

BEFORE



TODAY



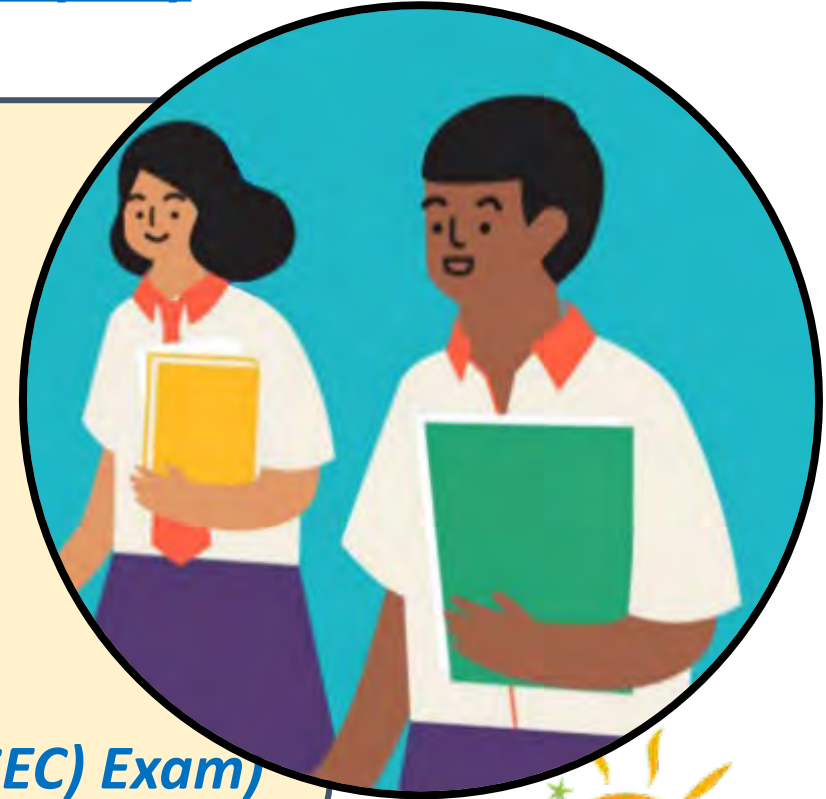
SECONDARY SCHOOL EXPERIENCE WITH FULL SBB (SECONDARY)



FULL SBB (SECONDARY)

Here are what students will experience under Full SBB (Sec):

- **Removal of Express, N(A) and N(T) courses**
(Replaced with posting groups, PG1, PG2 and PG3)
- **Mixed form classes**
- **Offering subjects at a more demanding level, including Humanities subjects**
- **Common National Examinations (From 2027)**
(Singapore-Cambridge Secondary Education Certificate (SEC) Exam)



PSLE SCORE AND POSTING GROUPS

PSLE Score	Posting Group(s)	Indicative level for most subjects at start of Secondary 1
4 - 20	3	G3
21 - 22	2 or 3	G2 or G3
23 - 24	2	G2
25	1 or 2	G1 or G2
26 - 30 (with AL7 or better in EL and MA)	1	G1

*Note: If your child is eligible for 2 Posting Groups, either Posting Group 3 and 2; or Posting Group 2 and 1, they **must choose 1 Posting Group before submitting their school choices**. The selected Posting Group will apply to all the school choices.*

CHOOSING SUITABLE SECONDARY SCHOOLS WITH YOUR CHILD



SCHOOL CHOICE JOURNEY



DISCOVER



EXPLORE



SUPPORT

SCHOOL CHOICE JOURNEY

DISCOVER

Consider your child's strengths, interests and abilities

- **Discuss the options with your child, with the following considerations:**
 - **School culture:** What is the school's culture and ethos?
 - **Programmes, subjects and CCAs offered:** Can the school support and develop your child's interests, strengths and abilities? Are there CCAs that would interest your child?
 - **Location and transport options:** Is it too far from home? How will your child get to school?



SCHOOL CHOICE JOURNEY

EXPLORE

Shortlist schools that offer programmes that cater to the child's strengths and interests, and will provide suitable learning environments

- Refer to SchoolFinder and the MySkillsFuture Portal for information on the schools' location, school type, CCAs, programmes and subjects they offer to shortlist schools that meet your child learning needs.
- Parents may also refer to the secondary schools' websites and visit their Open Houses.



SCHOOL CHOICE JOURNEY

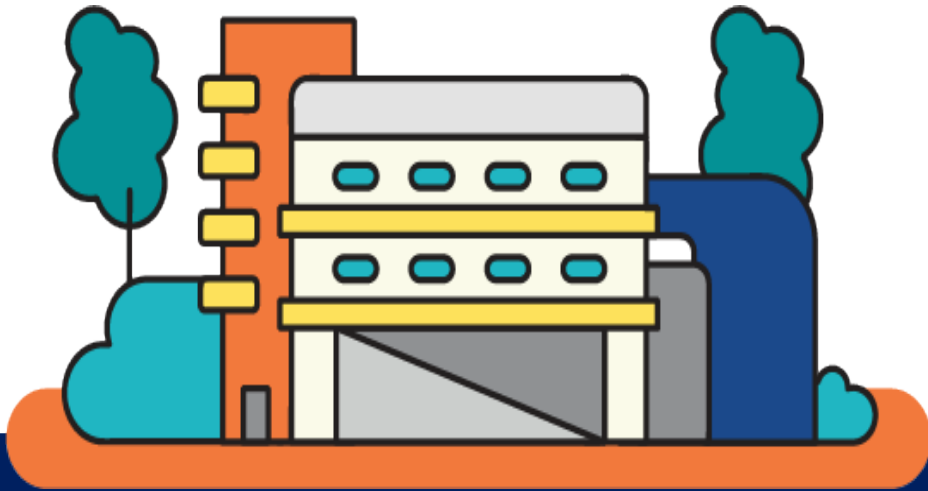
SUPPORT

Have regular conversations with your child to understand their personality, strengths and interests, and their education and career aspirations.

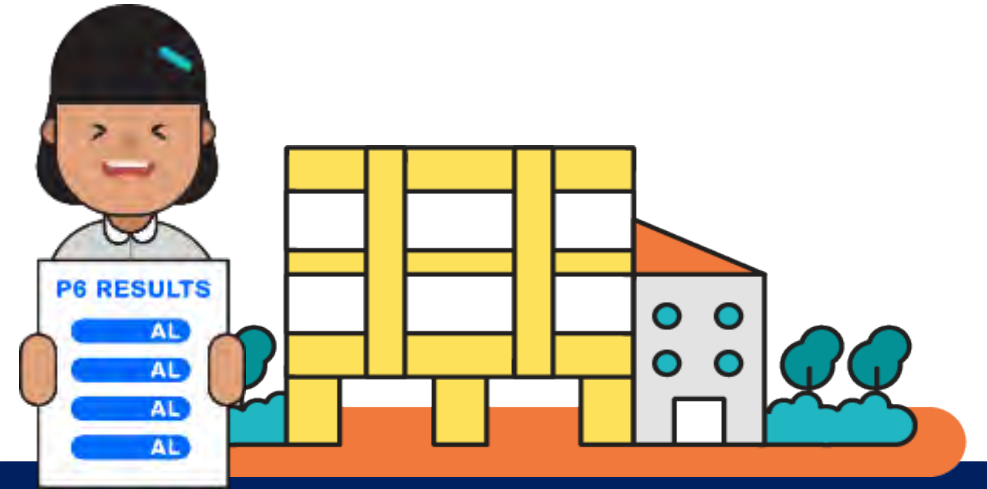
- Be open and flexible when discussing your child's preferences, needs and choices.
- Manage our expectations and not project our own expectations on them.
- Affirm your child when they shares their plans with you and offer support.



TIPS DURING THE S1 POSTING EXERCISE

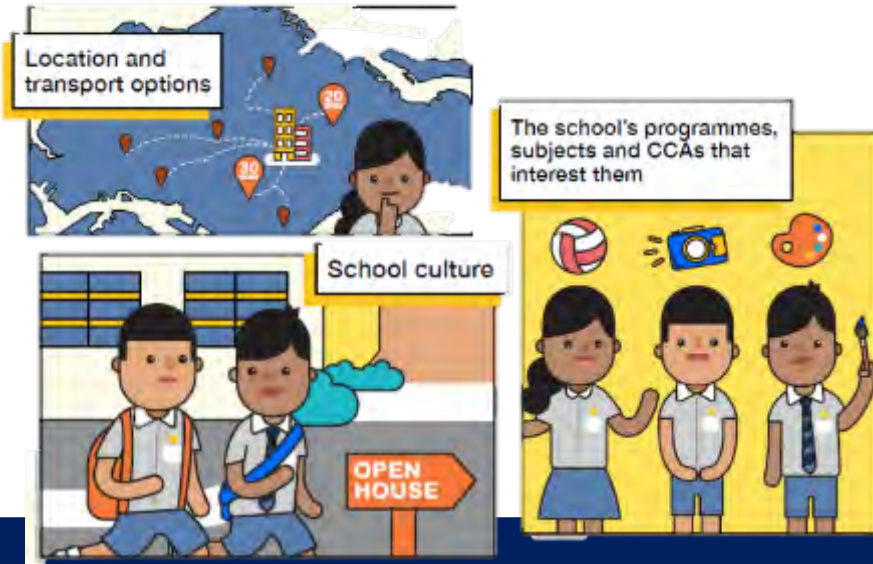


Use all 6 options with a range of Cut-off Points as this will increase your child's chances of being posted to a school of their choice.



Take reference from schools' PSLE Score ranges, which serves as a guide for you and your child to shortlist school choices. Consider at least 2-3 schools where your child's PSLE Score is better than the school's Cut-off Point.

TIPS DURING THE S1 POSTING EXERCISE



Based on the PSLE Score ranges, shortlist suitable schools. Consider:

- Programmes, subjects and CCAs that interest them
- Learning environment (e.g. open house, school website)
- Location etc.



Rank your child's preferred school higher in the school choice order.

This will increase your child's chances of being posted to that school, if tie-breakers are required.

POPULAR SECONDARY SCHOOL CHOICES OF PGPS STUDENTS

Edgefield Secondary
School

Yusof Ishak Secondary
School

Greendale Secondary
School

Punggol Secondary
School



DIRECT SCHOOL ADMISSION – SECONDARY (DSA-SEC)



'Learn for Life' Phase of Education System

The current 'Learn for Life' phase of our education system aims to:

1. Develop diverse strengths and interests of our students
2. Nurture an intrinsic motivation to learn
3. Ensure every child has a good start in life, and can access opportunities at every stage of their lives



Learn for Life

Support our educators:
SkillsFuture for Educators

Structural change:
Ignite Joy of Learning

Stay future-ready:
Refresh Our Curriculum

Structural change:
One Sec Education, Many Subject Bands

Basic purpose:
Ensure Education is an Uplifting Force

Hold on to our roots:
Learn Languages for Life

SCHOOLS OPERATIONAL DIVISION

PUNGGOLGREEN
PRIMARY SCHOOL

Nurturing the Joy of Learning

1. Reduction of School-Based Assessment Load

- Holistic assessments in primary schools
- Removal of mid-year exams for P3 to P6

2. Changes to PSLE Scoring

- Reduce overly-fine differentiation between students & unnecessary competition

3. Broadened Definition of Merit in Admissions

- Expansion of Direct School Admission (DSA) & refinement to DSA policy
- Aptitude-based admissions in IHLs

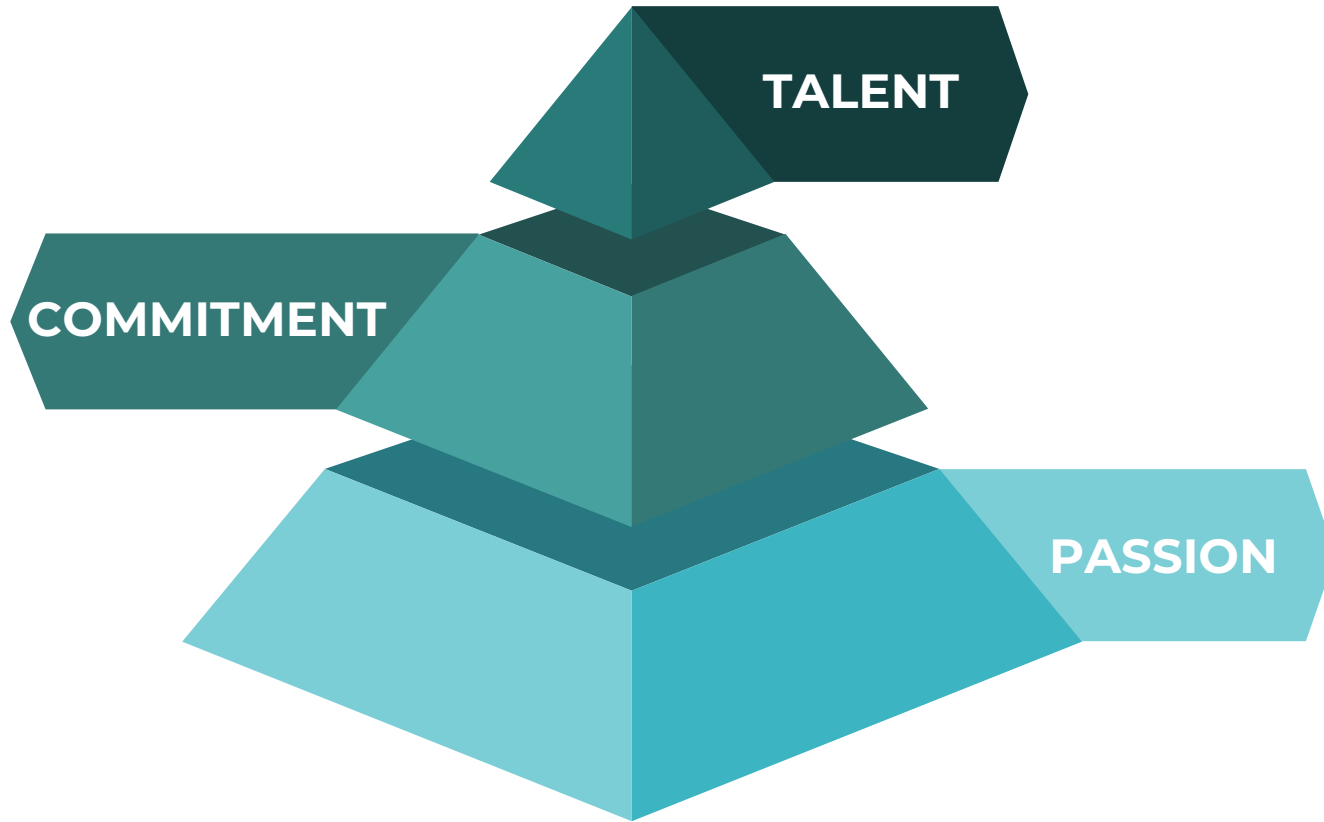


WHAT IS DSA-SEC?

- Allows students to gain direct entry to certain secondary schools **based on their talent in sports, CCAs and specific academic areas**, before taking the PSLE.
- Every secondary school offers distinctive programmes
 - Academic and non-academic programmes
 - Set their own selection process and criteria
 - Admit up to 20% of its students with talents who can be further developed by its programmes



IS DSA-SEC SUITABLE FOR MY CHILD?



DSA can support your child in developing his/her talent if your child:

- Has a strong passion in specific area/s of learning.
- Can stay committed to developing this interest.



ELIGIBILITY

Students can apply for DSA-Sec based on a wide-range of talents, including:

- Sports and Games (e.g. Basketball, Badminton, Football)
- Visual, Literary and Performing arts (e.g. Dance, Art)
- Debate and Public speaking
- Science, Mathematics and Engineering (e.g. E2K, STEM involvement)
- Languages and Humanities
- Uniformed groups (e.g. Scouts)
- Leadership (e.g. Prefects)



WHAT ARE SCHOOLS LOOKING FOR?

- The selection process differs across schools, and across different categories.
- In general, schools are looking for students with:

Talent, Passion & Commitment

- Applicant should have records of **participation** of &/or **achievements** in his/her chosen DSA area.
- Applicant may be put through aptitude tests, auditions or trials for schools to identify & select students based on **strengths**, **fundamentals** and/or **assessed potential**.

Positive Personal Qualities & Learning Dispositions

- Schools may look at records of applicant's **Leadership & VIA involvement** or **character development related awards**.
- Schools may also conduct interviews or scenario tests.

Right Academic Fit

- Schools may look at applicant's **primary school results (in particular, EOY P5 overall)** to assess if applicant will be able to cope with the demands of both his/her academic learning and chosen area of development.

LET'S HEAR FROM OUR EX-STUDENT

I started preparing for Wushu DSA in P5 - balancing school, two training sessions, and intensive external coaching four times weekly.

Preparation involved mastering techniques, sparring, and fitness, with extra sessions during holidays. The P6 year taught me **time management** and **resilience**. I stayed motivated by my passion for Wushu and the goal of securing a spot in my chosen school.

The process taught me **discipline** and **perseverance**. Receiving my DSA result was a **proud moment**, an indication that my hard work had really paid off. DSA was not just about school - it was also about **growth** and **lifelong skills**.



Jethro Ng Sheng Rui,
6 Integrity (2024)
Entered Chung Cheng High School
(Yishun) via DSA (Wushu)



LET'S HEAR FROM OUR EX-STUDENT

I began my leadership journey in Primary 3 when I became a prefect. From that point on, I gave my best in everything I did, always striving for excellence.

At P5, I was appointed as the vice-head prefect in the EXCO team where I was given many opportunities to learn and grow as a leader. These experiences taught me the importance of self-discipline, especially in managing my time effectively. The leadership training I received deepened my understanding of what it truly means to be a leader.

The DSA process taught me that hard work and responsibility are key to success. My journey had not been easy, but with the constant support and guidance from my teachers and parents, I am grateful to have received the confirmation offer from my dream school. It's a sign that all the hard work and efforts I put in had truly paid off!

Sharlene Wong Qihui,
6 Innovation (2024)
Entered St. Nicholas Girls School
via DSA (Student Leadership)



DSA TIMELINE

2025



Note: *If your child is admitted through DSA-Sec, they **MUST COMMIT** to their chosen school for the duration of the programme. They are **NOT ALLOWED** to submit school choices during S1 Posting or transfer to another secondary school.*



FEATURES OF DSA-SEC PORTAL

(ONLY ACCESSIBLE DURING THE DSA-SEC, APPLICATION PERIOD: MAY TO EARLY JUNE)

- 1 Enter website <https://go.gov.sg/apply-dsa-sec>
- 2 Login using Singpass
- 3 Look for the child's particulars and click "APPLY" to start the application process.
- 4 Indicate 3 choices of talent areas (*Choice order DOES NOT matter*)
*Maximum of 2 choices can be used to apply to same school of 2 different talent areas.
- 5 Follow prompts on the website to proceed and submit the online application.
- 6 Download PDF copy of successful submission of application for your reference.



POSSIBLE DSA OUTCOMES

- 1) **Confirmed Offer (CO)**: Your child has secured a place in his/her chosen DSA school, but final eligibility will depend on his/her Posting Group (PG), which is determined by their PSLE results.
- 2) **Waitlist (WL)**: Your child will be considered only if students with a Confirmed Offer decide not to enroll in that school. Allocation will then be based on his/her position on the school's Wait List.
- 3) **Unsuccessful**: Your child's application was unsuccessful. However, if he/she still wishes to enter the same secondary school, he/she can apply through the Secondary 1 Posting Exercise, provided his/her PSLE results meet the school's cut-off score.



IF MY CHILD HAS A DSA CONFIRMED OFFER, WILL THE PSLE RESULTS STILL MATTER?

Your child's PSLE results will still be **used to determine the secondary school posting group that he/she is eligible** for [i.e. PG1, PG2 or PG3]

Even if your child has a confirmed offer, they **must qualify for the posting group offered by the school** to be successfully admitted through the DSA.

Note:

If your child is admitted through DSA-Sec, they must commit to their chosen school for the duration of the programme. They are not allowed to submit school choices during S1 Posting or transfer to another secondary school.

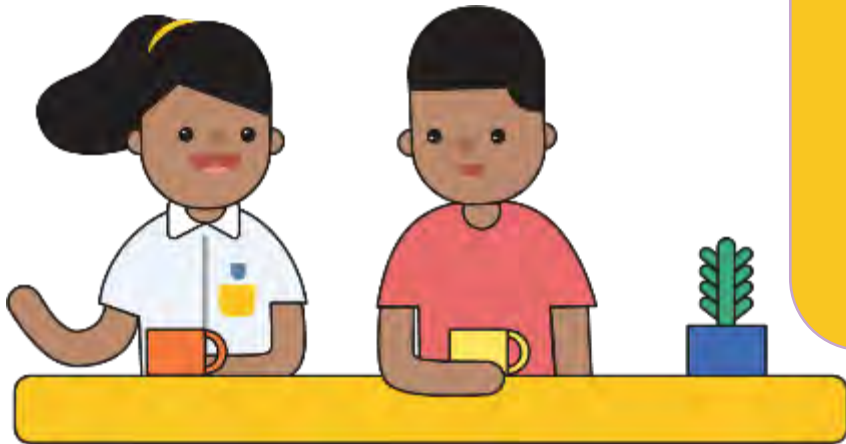


HOW WILL OUR STUDENTS BE SUPPORTED?



G Guided Exploration

Students will be guided by their teachers on secondary school options and converse with them about their strengths and aspirations.



R Responsive Ecosystem

Teachers may offer help to students who need additional support in selecting suitable schools or applying for DSA. This includes providing advice during the preparation process.

HOW WILL OUR STUDENTS BE SUPPORTED?



O

Opportunities for Exposure

Students will be given opportunities to hear and interact with secondary school students, so they can learn about the learning environments and programmes and selecting secondary schools (e.g. ECG Bazaar).



W

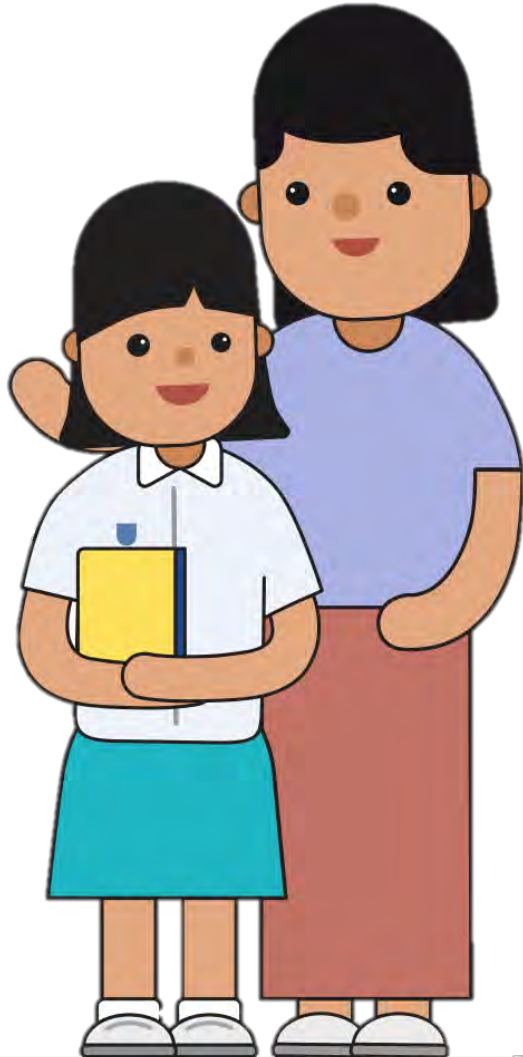
Winning Mindset

Teachers will partner parents to encourage students to give their best and apply for DSA but at the same time impress upon them that setbacks are part of the learning process and foster growth mindset.

BEING A P.S.L.E. PARENT



LET US TOGETHER BE...



Present

Supportive

Loving

Encouraging



STRATEGIES TO SUPPORT YOUR CHILD

- Encourage small progress and affirm good effort
- Plan your holidays
 - Additional lessons planned during first week of June holidays
 - Additional lessons during last few days of September holidays
- Set routines and adopt good habits such as setting limits to use of handphones, playing of computer games and getting a good night's sleep
- Adopt a whole family approach and encourage a healthy lifestyle



STRATEGIES TO SUPPORT YOUR CHILD

- Work closely with your child's teachers
- Balance and manage tuition work (if any)
- Remind them that the PSLE is only one checkpoint in their education journey with multiple pathways - ***Success is personal to every child and is not measured by examination results***
- Look out for out-of-character behaviour that suggests your child might be worried



QUESTIONS / QUERIES CAPTURED THROUGH PG

After school activities related Questions

When will *CCA* activities stand down?

Primary 6 students will officially **stand down from CCAs from Term 3 onwards**. This is to allow students more time to revise their work and prepare for the PSLE in Term 3 and 4.

What is the schedule for P6 supplementary during school holidays?

It is **currently planned to take place during the first week of the June holidays and last two days of September holidays**. Details on the holiday schedule will be shared via Parents Gateway at a later date.

QUESTIONS / QUERIES CAPTURED THROUGH PG

DSA related Questions

Which school should my child apply to for DSA (Sec)?

- When selecting a school, look for a school with **programmes that align with your child's strengths and interests**:
 - Schools are looking out for students who possess the interests and talents that they can develop further.
 - Learn more about the secondary school's **pace of learning** and range of programmes.
- You can also **find out about what each school offers** by:
 - Visiting schools' websites and/or SchoolFinder.
 - Visiting the MOE's DSA-Sec website (will be updated around April).

QUESTIONS / QUERIES CAPTURED THROUGH PG

DSA related Questions

When applying for DSA, which school result is considered by the Secondary school? Do we need to provide proof?

Your child's primary school information will automatically be shared with the applied DSA-Sec school(s). This information includes your child's P5 and P6 academic results, and other information from P4 to P6, i.e. Co-curricular Activities (CCA), Values in Action (VIA) involvement, School-based achievements and awards such as Edusave awards, National School Games and Junior Sports Academy participation.

*You **do not** need to key in this information.

*Application will be done online through DSA-Sec Portal

QUESTIONS / QUERIES CAPTURED THROUGH PG

DSA related Questions

What kind of support will the school provide a child who is applying for DSA-Sec?

Depending on the DSA talent area applied for, the school may offer support where applicable:

- DSA Visual Arts – School may support students in giving feedback to improve their portfolio.
- DSA Sports/Performing Arts (For a sport that is an offered CCA in PGPS) – Time and space may be made available to the student for their additional practice when preparing for try-outs/audition.
- If interview sessions are arranged, they may seek advice from their FT or CCA teacher.



*As their greatest supporters,
let's believe that our children
will strive
to be the best that they can be,
each in their own way!*



THANK YOU!
HAVE A LOVELY
EVENING AHEAD!



Future-Ready Leaders with the Heart for Others



PUNGGOLGREEN
PRIMARY SCHOOL

FIND OUT MORE ON THE PSLE-FSBB MICROSITE!

