



School's Focus, Key Outcomes & Programmes

PGPS STUDENT OUTCOMES



SELF-DIRECTED LEARNERS

- Have a lively curiosity about things
- Take responsibility for their own learning
- Take pride in their work
- Have healthy habits and an awareness of the arts



CONFIDENT LEADERS

- Know their strengths and areas for growth
- Think for themselves
- Express themselves confidently
- Know right from wrong and choose to do what is right



INNOVATIVE COLLABORATORS

- Are creative and inventive
- Exercise initiative
- Work effectively in teams
- Strive for excellence to achieve a common goal despite challenges



CARING CITIZENS

- Know and love Singapore
- Empathize and share with others
- Care for others and the environment
- Take action to improve the lives of others

P6 Programmes to grow Self-Directed Learners



Books Alive



**MTL Voice 21 Enrichment
Programme**

P6 Programmes to grow Self-Directed Learners



ART Fiesta



Math-nificent Week

P6 Programmes to grow Self-Directed Learners



Coding Program



Digital Music

P6 Programmes to grow Confident Leaders



Leadership Opportunities

- Student Leaders
- Peer Support Leaders
- Classroom Committee members
- MTL Support Leaders
- Math Ambassadors
- PAM Ambassadors
- CCA Leaders

P6 Programmes to grow Confident Leaders



EL Fest



MTL Competitions

P6 Programmes to grow Confident Leaders



Music Busking



Art Competition



PGPS Got Talent!

P6 Programmes to grow Innovative Collaborators



Learn it, Use it, Enjoy it!
MTL Fortnight



Games Carnival



Math Galore

P6 Programmes to grow Caring Citizens



National Education

- Total Defence Day
- International Friendship Day
- Racial Harmony Day
- National Day

P6 Programmes to grow Caring Citizens



World Water Day



Earth Day



Citizenry-Driven MTL Tasks

P6 Programmes to grow Caring Citizens



Upcycling with Cardboard



Cardboard Carnival Games

Values in Action (VIA)

- School Wide VIA - SHINE@PGPS
- Level Specific VIA – Upcycling@PGPS

Partnership with Parents





So, how can you join us in engaging
the mind, nurturing the heart and
empowering the hands of your child?

Parent Partnership Tips for English



- Cultivate the love for reading
- Read the newspapers
- If you drive, listen to the news
- Supervise revision and encourage your child to engage in meaningful conversations

Parent Partnership Tips for Math

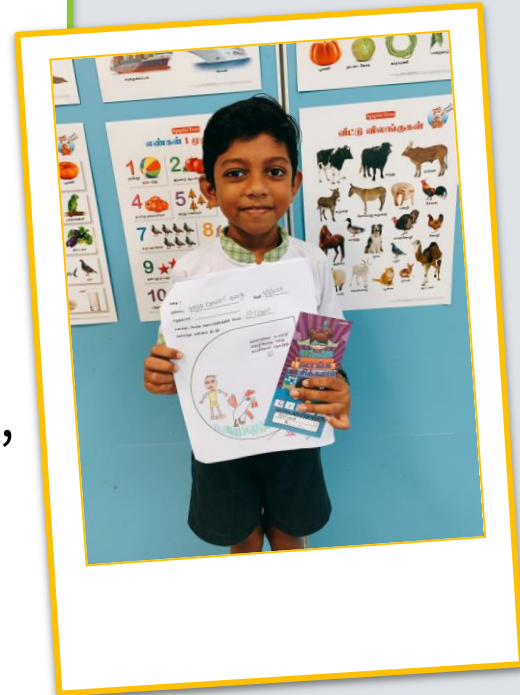
- Ensure that your child have strong fundamentals (e.g. multiplication table)
- Encourage your child to ask questions to develop understanding
- Focus on the process, not the answer.
- Remind your child to show all the steps when solving problems

- ✓ Where and why are you stuck?
- ✓ How have you solved similar questions in school?
- ✓ Let's see how you arrived at the answer.
- ✓ How can we be sure that this answer is accurate?
- ✓ Is there another way to solve this?
- ✓ How can we do this better?



Parent Partnership Tips for MTL

- Motivate your child to continue to try despite setbacks
- Role-model MTL (Converse with your child and Learn with your child)
- Encourage your child to keep a MTL journal book and “MTL Vocabulary Bank”
- Encourage listening to MTL radio and watching MTL programmes, and share what he/she has viewed with you

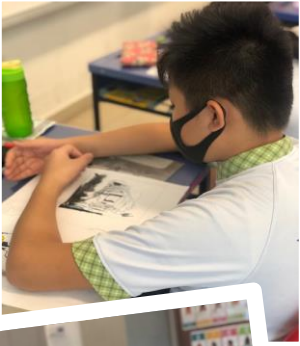


Parent Partnership Tips for Science

- Go on nature trips with your child and have conversations about what they observe
- Encourage your child to ask questions and develop a habit to investigate natural phenomena
- Encourage your child to watch Science shows and read science-related books



Parent Partnership Tips for PAM Subjects

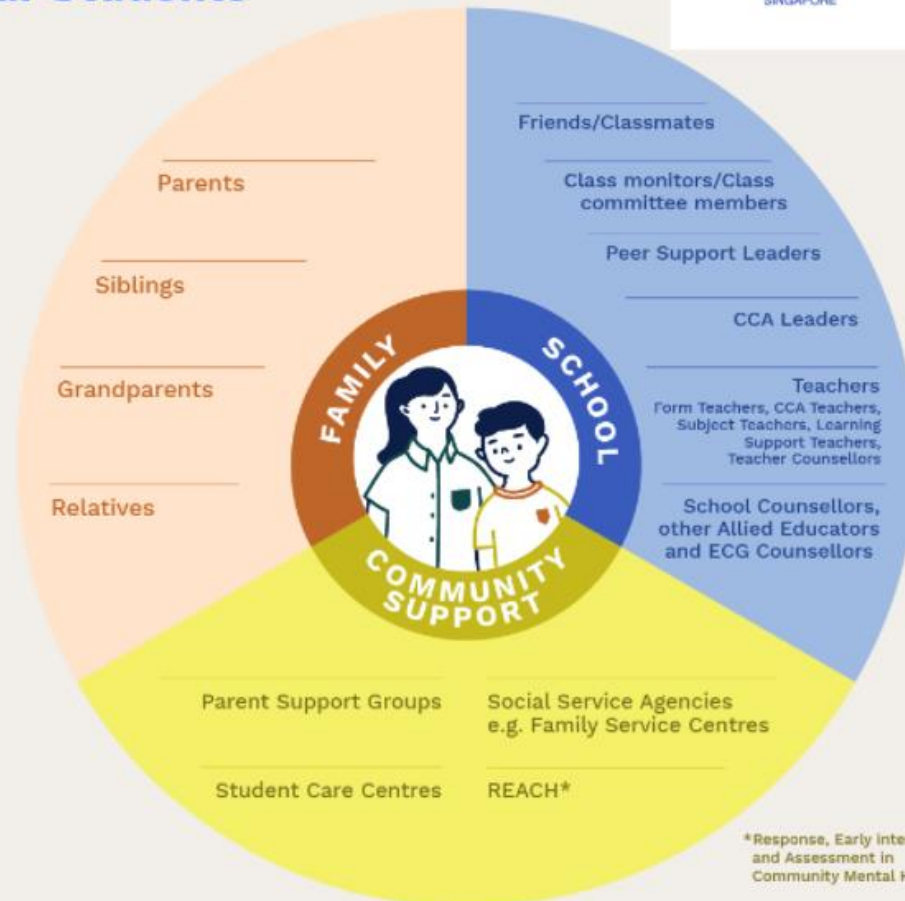


- Encourage your child to express themselves freely
- Affirm your child's interests and efforts
- Engage in a discussion with your child about things they have done, learnt or created in PAM lessons

A Caring and Enabling Society: Circles of Support for our Students



Ministry of Education
SINGAPORE



*Response, Early intervention,
and Assessment in
Community Mental Health

Source:
Schoolbag.sg



MOE Sexuality Education for P5 & P6 Students

Growing Years (GY) Programme

WHAT IS SEXUALITY EDUCATION?

- Sexuality education is a process of gaining knowledge and forming attitudes, beliefs and values regarding human sexuality.
- MOE sexuality education covers the following areas:
 - Physical: Sexual maturity and intimacy, physiology of sex and human reproduction.
 - Emotional: Sexual attitudes and feelings towards self and others.
 - Social: Sexual norms and behaviour, and the legal, cultural and societal implications.
 - Ethical: Values and moral systems related to sexuality.

WHY HAVE SEXUALITY EDUCATION?

Our children are growing up with a wide range of influences through the internet. Sexuality Education aims to:

- Support students in managing their physiological, social and emotional changes as they grow up and develop healthy relationships.
- Guide students to make wise, informed and responsible decisions on sexuality matters.
- Help students develop a moral compass and respect for themselves and others by having positive mainstream values and attitudes about sexuality that are premised on the family as the basic unit of society.

SEXUALITY EDUCATION @ PGPS

- Sexuality Education (SEd) in schools is about enabling students to understand the physiological, social and emotional changes they experience as they mature, develop healthy and rewarding relationships including those with members of the opposite sex, and make wise, informed and responsible decisions on sexuality matters.
- SEd is premised on the importance of the family as the basic unit of society. This means encouraging healthy, heterosexual marriages and stable nuclear family units with extended family support.
- The teaching and learning of SEd is based on respect for the values and beliefs of the different ethnic and religious communities in Singapore on sexuality issues.
- **Sexuality Education in Punggol Green Primary will be conducted by our own teachers who are specially selected and trained to conduct the programme and it would be conducted during curriculum hours at the end of Term 1.**

IMPORTANCE OF GROWING YEARS PROGRAMME

- The upper primary years mark the onset of puberty. With better nutrition and improved health care, children are reaching puberty at a younger age and have to grapple with physical, emotional and psychological changes in themselves.
- The implication is that our children are becoming biologically ready for sexual activity sooner without necessarily having the corresponding cognitive or emotional maturity to modulate their behaviours.
- The Primary 5 & 6 Growing Years (GY) package, “Curious Minds (2nd Edition)”, aims to meet **students’ developmental needs**, give **emphasis to the teaching of skills and values**, and focus on **helping students navigate changes, build healthy relationships, especially online relationships**, and **exercise safety**.

WHAT'S NEXT?

- Parents of Primary 5 & Primary 6 students will receive the official letter with regards to the Sexuality Education programme at the end of January through Parents Gateway.
- Please read through the contents carefully and acknowledge that you have read and understood the information provided on the content coverage and delivery of the programme.
- Do fill in the '*Parent Opt-out Form*' only if you wish to opt your child out of the Growing Years programme.

Sexuality education is a combined effort which begins at home with parents, continues in school with teachers, and is supplemented by community effort.

We hope that you will support and give consent for your child to experience this very important programme so that he/she can benefit from it.



Direct School Admission (DSA-SEC)

What is DSA-SEC?

An opportunity for P6 students to seek admission to a secondary school based on their talent in sports, CCAs and specific academic areas before taking the PSLE.

How does it work?

Each participating secondary school offers distinctive programmes and sets its own selection process and criteria to admit students with talents who can be further developed by their programmes.

Who can apply?

Primary 6 students can apply for DSA-Sec based on a wide-range of talents, including:

- Sports and games
- Visual, literary and performing arts
- Debate and public speaking
- Science, mathematics and engineering
- Languages and humanities
- Uniformed groups
- Leadership (for example, prefects)

Selection Criteria

Schools have different selection criteria, but in general, applicants must be able to demonstrate a high level of ability in that talent area.

For example, your child might have:

- represented the school in a CCA
- held a prominent role in a play or performance
- done well in a subject such as mathematics or creative writing
- held a leadership role in class or a CCA

Note: *Academic results and non-academic school-based achievements will be shared automatically to the school that you have chosen*

Is DSA right for your child?

Yes, only if your child has **talent in an area** which a secondary school offers the DSA in.

And if your child is **passionate** about and **committed** to developing his/her strengths **in that talent area in that school.**

What if you do not participate in the DSA exercise?

You will participate in the Secondary 1 (S1)
Posting exercise in November and be admitted to
a secondary school based on your PSLE AL score.

Information on DSA

More information on the DSA application process will be shared in April 2022.

Visit MOE's website and the respective secondary school's websites for more information on talent areas.

MOE Website on DSA: <https://www.moe.gov.sg/secondary/dsa>

Primary 6 Parents' Briefing

Focus: PSLE Matters

Date: 11 March 2022