

**Welcome to**  
**Primary 6**  
**Parents' Briefing**

**11 March 2022**



**PUNGGOLGREEN**  
PRIMARY SCHOOL

**Future-Ready Leaders With The Heart For Others**

# Outline of Sharing

1. Intent of PSLE
2. Understanding How the PSLE Scoring System Works
3. Understanding How the SI Posting System Works
4. Choice of Secondary School & DSA
5. PGPS Performance at PSLE 2021
6. Strategies in Supporting Your Child to Achieve Academic Excellence

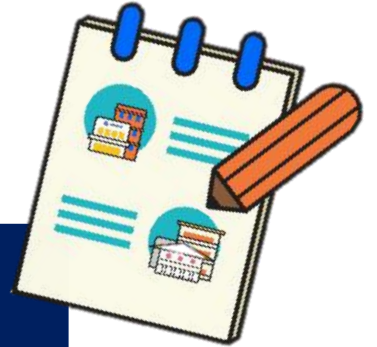


# WHAT IS THE INTENT OF THE PSLE?



**A useful checkpoint at the end of primary school**

**A fair way to determine secondary school posting**



Over the years, we have been changing the education system to help our students discover and develop their strengths and interests, while moving away from an over-emphasis on academic results. Our PSLE Scoring changes reduce an over-emphasis on academic results by:

- 1 Reducing fine differentiation of students' examination results at a young age.**
- 2 Recognising a student's level of achievement, regardless of how his/her peers have done.**
- 3 Encouraging families to choose secondary schools holistically based on students' strengths, interests and abilities.**



**PUNGGOLGREEN**  
PRIMARY SCHOOL

**Future-Ready Leaders With The Heart For Others**

# How the PSLE Scoring System Works

## FROM T-SCORE TO SCORING BANDS

### a) Reduces fine differentiation of students' examination results at a young age

- Students with similar scores in each subject are grouped into wider scoring bands measured in 8 ALs.

### b) Reflects a student's individual level of achievement.

- Students' Achievement Level (AL) for each subject will reflect their level of achievement, rather than how they have performed relative to their peers.

AL	RAW MARK RANGE
1	$\geq 90$
2	85 – 89
3	80 – 84
4	75 – 79
5	65 – 74
6	45 – 64
7	20 – 44
8	$< 20$



# GRADING OF FOUNDATION SUBJECT GRADES

Foundation subject grades are graded in scoring bands from **AL A to C**.

To derive a student's overall PSLE Score for SI Posting, AL A to AL C for Foundation level subjects are **mapped to AL 6 to AL 8 of Standard level subjects respectively**.

Similar to the PSLE T-score system, this mapping is based on the learning and assessment load of the subjects, and informs students of how ready they are for the curriculum in secondary school.

FOUNDATION LEVEL AL	FOUNDATION RAW MARK RANGE	EQUIVALENT STANDARD LEVEL AL
A	75 – 100	6
B	30 – 74	7
C	< 30	8



**PUNGGOLGREEN**  
PRIMARY SCHOOL

**Future-Ready Leaders With The Heart For Others**

# Overall PSLE Score

- A student's PSLE Score is the sum of the four AL scores across his/her Standard and Foundation subjects. The PSLE Score can range from 4 to 32, with 4 being the best.
- Students are placed in secondary school courses based on their PSLE Score – Express, Normal (Academic) or Normal (Technical).

ENGLISH LANGUAGE AL 3

MOTHER TONGUE LANGUAGE AL 2

MATHEMATICS AL 4

SCIENCE AL 3

**PSLE SCORE: 12**

ENGLISH LANGUAGE AL 5

MOTHER TONGUE LANGUAGE AL 2

FOUNDATION MATHEMATICS ALB

SCIENCE AL 6

**PSLE SCORE: 21**

PLACEMENT OUTCOME	PSLE SCORE
EXPRESS	4 – 20
EXPRESS / N(A) option	21 – 22
N(A)	23 – 24
N(A) / N(T) option	25
N(T)	26 – 30, with AL7 or better in both EL <u>and</u> MA

*Express, N(A) and N(T) courses will be phased out by 2024.*



**PUNGGOLGREEN**  
PRIMARY SCHOOL



# ELIGIBILITY CRITERIA FOR HIGHER MOTHER TONGUE LANGUAGE (HMTL) IN SECONDARY SCHOOLS

- The eligibility criteria for taking HMTL takes reference from past criteria.
- It ensures students can cope with the higher academic load.
- Secondary schools continue to have the flexibility to offer HMTL to students who do not meet the criteria if they:
  - have high ability and interest in MTL, and
  - are able to cope with the learning load required.

## ELIGIBILITY CRITERIA FOR HMTL

- (i) An overall PSLE Score of 8 or better
- or
- (ii) An overall PSLE Score of 9 to 14 (inclusive); and attain
  - AL 1 / AL 2 in MTL or
  - Distinction / Merit in HMTL



# ELIGIBILITY CRITERIA FOR MOTHER TONGUE LANGUAGE (MTL) 'B' IN SECONDARY SCHOOLS

- The MTL 'B' curriculum is designed to help students in the Express and N(A) courses who face exceptional difficulty coping with MTL.
- Schools have discretion to offer MTL 'B' to students who face exceptional difficulty with MTL but do not meet the eligibility criteria at Secondary I based on PSLE results.
- As students progress in secondary school, they may also take up MTL 'B' if they are assessed to be suitable by their schools.

## ELIGIBILITY CRITERIA FOR MTL 'B' (FOR STUDENTS OFFERED THE EXPRESS OR N(A) COURSE)

AL 7 or 8 in Standard MTL  
or  
AL B or C in Foundation MTL



**PUNGGOLGREEN**  
PRIMARY SCHOOL



# SUBJECT-BASED BANDING (SECONDARY)

## [SBB (SEC)] ELIGIBILITY CRITERIA

- SBB (Sec) provides students posted to the N(A) and (NT) courses with **greater flexibility** to take various subjects at a more demanding level based on their subject-specific strengths.
- Under the new PSLE Scoring System, the SBB (Sec) eligibility criteria is as follows:

FOR STUDENTS POSTED TO THE N(A) OR N(T) COURSE	
PSLE SUBJECT GRADE	OPTION TO TAKE SUBJECT AT
AL 5 or better in a Standard level subject	Express level
AL 6 or better in a Standard level subject <u>OR</u> AL A in a Foundation level subject	N(A) level

- As students progress in secondary school, they continue to have opportunities at various junctures to take subjects at more demanding levels based on their performance in school



# SUBJECT-BASED BANDING (SECONDARY) [SBB (SEC)] ELIGIBILITY CRITERIA

## EXAMPLE:

ENGLISH LANGUAGE	AL6
MOTHER TONGUE LANGUAGE	AL6
MATHEMATICS	AL5
SCIENCE	AL6
<hr/>	
<b>PSLE SCORE:</b>	<b>23</b>
Offered N(A) course	



**PUNGGOLGREEN**  
PRIMARY SCHOOL

# FULL SUBJECT-BASED BANDING (FULL SBB)

- MOE is expanding Subject-Based Banding to Full SBB in secondary schools.
- This is in line with the changes to PSLE Scoring to recognise each student's own level of achievement and encourage them to choose secondary schools that fit their strengths and interests.
- Full SBB aims to further nurture the joy of learning and develop multiple pathways to cater to the different student profiles. Through Full SBB, we want students to:



- have greater ownership of their education, and learn each subject at the level that best caters to their overall strengths, interests and learning needs, and
- have more opportunities to interact with friends of different strengths and interests.
- not be held back by negative self-concepts and labelling.
- have increased access to post-sec pathways, while having strong fundamentals in their subjects so that they are able to thrive in the pathway they choose.

# FULL SUBJECT-BASED BANDING (FULL SBB)

- The following are changes that students will experience from Full SBB:

- Removal of Express, N(A) and N(T) courses
- Mixed form classes
- Common Curriculum subjects
- Offering subjects at a more demanding level, including Humanities subjects
- Common National Examinations
- Post-secondary Admissions

*(More information will be made available at a later date.)*



**PUNGGOLGREEN**  
PRIMARY SCHOOL

**Future-Ready Leaders With The Heart For Others**

# FULL SUBJECT-BASED BANDING (FULL SBB) TIMELINE

Link to PSLE-FSBB Microsite



<https://go.gov.sg/pslefsbb>



**2020**

Full SBB pilot commenced in 28 secondary schools. Feedback from pilot schools has been positive.



**2022**

Full SBB will continue to be rolled out to more schools in phases.

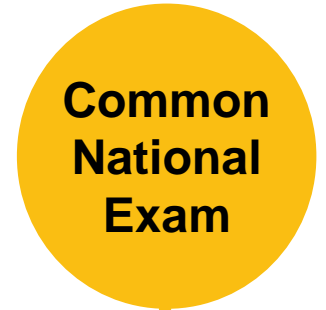


**2023**



**2024**

- From 2024,
- There will no longer be Express, N(A) and N(T) courses.
  - Students will be able to study subjects at different levels that suit their interests, strengths and learning needs.



**2027**

From 2027, students will sit for the common national examination and receive a new national certification with subjects at different levels.



# Entering a Secondary School



## PSLE/ SI Posting Exercise

- Based on a student's **PSLE score (Total AL Score)**
- **Most students enter secondary schools this way**



## DSA

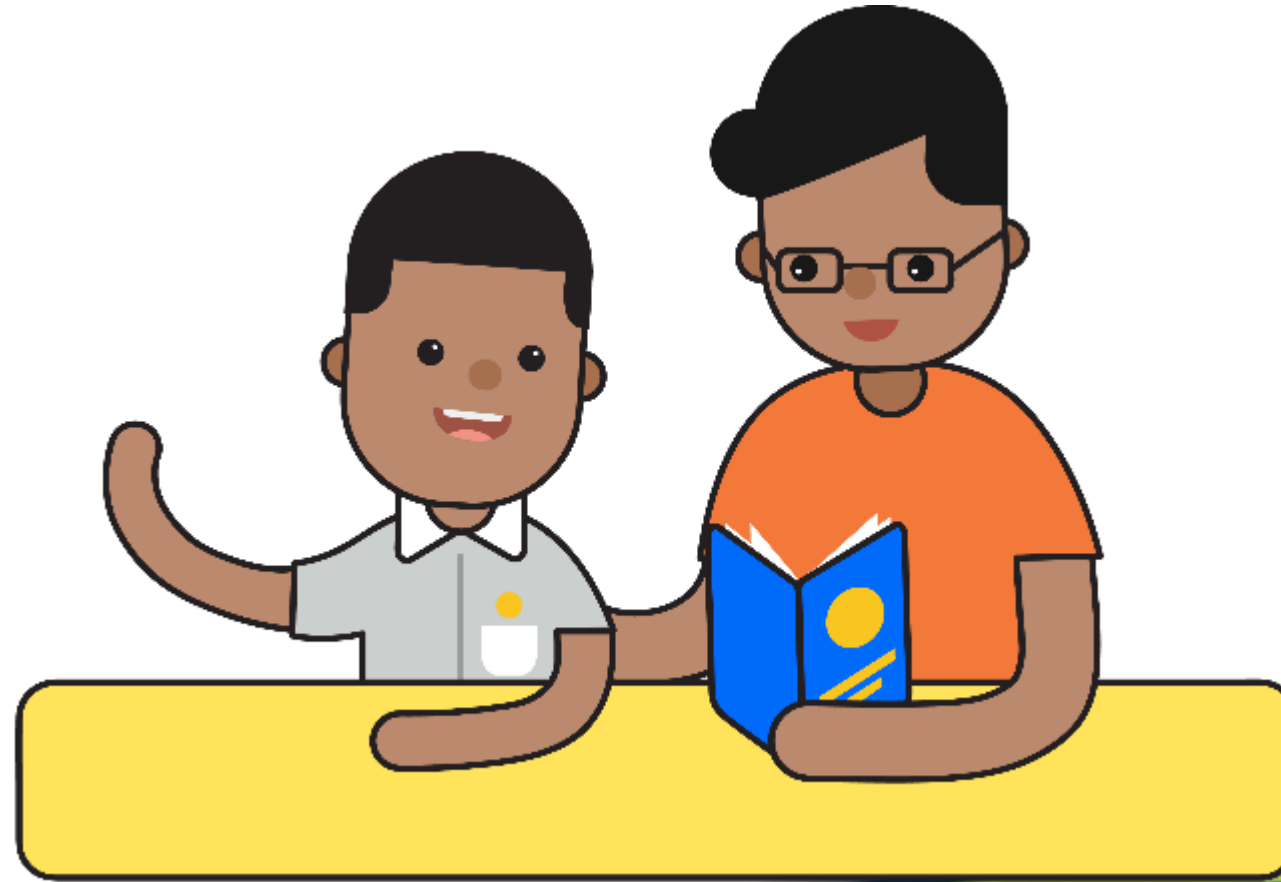
- Based on a diverse range of **talents and achievements in specific academic subjects or non-academic areas, before taking the PSLE.**
- Allows students to **access school programmes to develop their talents**



**PUNGGOLGREEN**  
PRIMARY SCHOOL



# CHOOSING SUITABLE SECONDARY SCHOOLS WITH YOUR CHILD



**PUNGGOLGREEN**  
PRIMARY SCHOOL

Future-Ready Leaders With The Heart For Others

# SCHOOL CHOICE JOURNEY

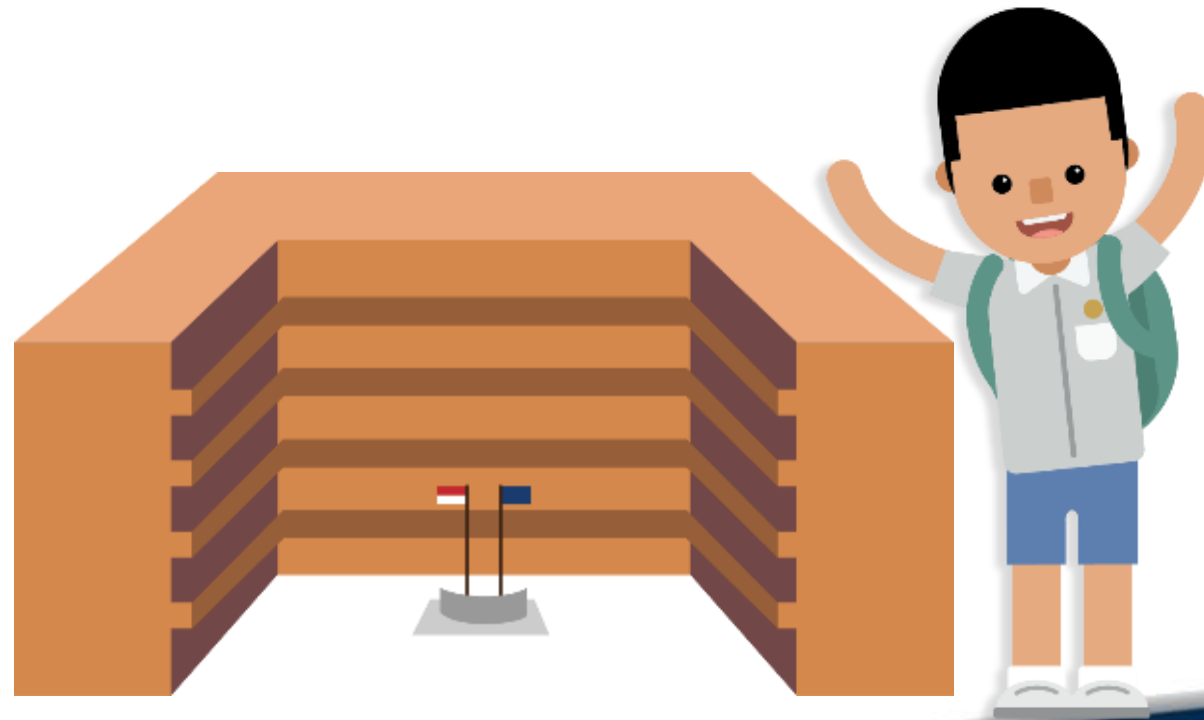
- The PSLE Score ranges are a **useful reference point** for parents and students to consider secondary schools.
- Use this information, together with other **important factors** such as the secondary schools' distinctive programmes, CCAs, ethos and cultures, to shortlist schools that would best fit the educational needs of the student.
- If your child has specific talents and strengths beyond the PSLE (e.g. areas such as sports, performing arts and leadership), consider the **Direct School Admission-Secondary (DSA-Sec)** as an alternative admission pathway to access secondary schools that have talent development programmes in these areas.



PUNGGOLGREEN  
PRIMARY SCHOOL

Future-Ready Leaders With The Heart For Others

# UNDERSTANDING HOW THE S1 POSTING SYSTEM WORKS



**PUNGGOLGREEN**  
PRIMARY SCHOOL

Future-Ready Leaders With The Heart For Others



# CHOICE ORDER OF SCHOOLS MATTERS MORE

- Students continue to have **six choices** in selecting their secondary schools.
- Similar to past years, students continue to be posted to a secondary school based on **academic merit, i.e., PSLE Score**, and their **school choice order**.
- If there are two or more students with the same PSLE Score vying for the last remaining place(s) in a school, the following tie-breakers will be used in the following order:
  1. **CITIZENSHIP**
  2. **CHOICE ORDER OF SCHOOLS (New tie-breaker from 2021 onwards)**
  3. **COMPUTERISED BALLOTING**
- The new tie-breaker based on school choice order recognises the different considerations that families have in making school choices.



**PUNGGOLGREEN**  
PRIMARY SCHOOL

# Tie-breakers

## in the new S1 Posting System

Tie-breakers are used only if there are two or more students with the same PSLE Score vying for the last available place(s) in a school.

Here's a simplified example.

5 students are vying for the last places in the schools of their choice.

**Jane**  
Singapore Citizen  
16 pts

SCHOOL CHOICES:  
1) Sch A  
2) Sch ...  
3) Sch ...  
4) Sch ...

**Bryan**  
Singapore Citizen  
20 pts

SCHOOL CHOICES:  
1) Sch B  
2) Sch ...  
3) Sch ...  
4) Sch ...

**Mary**  
Singapore Citizen  
20 pts

SCHOOL CHOICES:  
1) Sch A  
2) Sch B  
3) Sch C  
4) Sch ...

**Alan**  
Permanent Resident  
20 pts

SCHOOL CHOICES:  
1) Sch A  
2) Sch B  
3) Sch D  
4) Sch ...

**Rina**  
Permanent Resident  
20 pts

SCHOOL CHOICES:  
1) Sch A  
2) Sch B  
3) Sch D  
4) Sch E

➤ Students with better scores will be posted first

Jane has a better PSLE score. She will be posted first, to **School A**.

➤ Tie-breaker #1: Citizenship

Bryan and Mary are Singapore Citizens. They will have priority to enter **School B**.

Bryan, Mary, Alan and Rina have the same score.

As Jane has taken the last available place in School A, Bryan, Mary, Alan and Rina will vie for the last available place in their next choice, **School B**.

➤ Tie-breaker #2: Choice order of schools

Alan and Rina will be tie-broken out as they are Permanent Residents. They will be considered for their next choice, **School D**.

➤ Tie-breaker #3: Computerised balloting

Because Bryan ranked School B higher than Mary, he will be posted to **School B**.

Since Bryan has taken the last place in School B, Mary will be posted to **School C**.

Alan and Rina have both ranked School D as their third choice. They will go through computerised balloting to vie for the last remaining place in **School D**.

Through computerised balloting, Alan is posted to **School D**.

Since Alan has taken the last place in School D, Rina will be posted to her fourth choice, **School E**.



# PSLE SCORE RANGES FOR INDIVIDUAL SECONDARY SCHOOLS



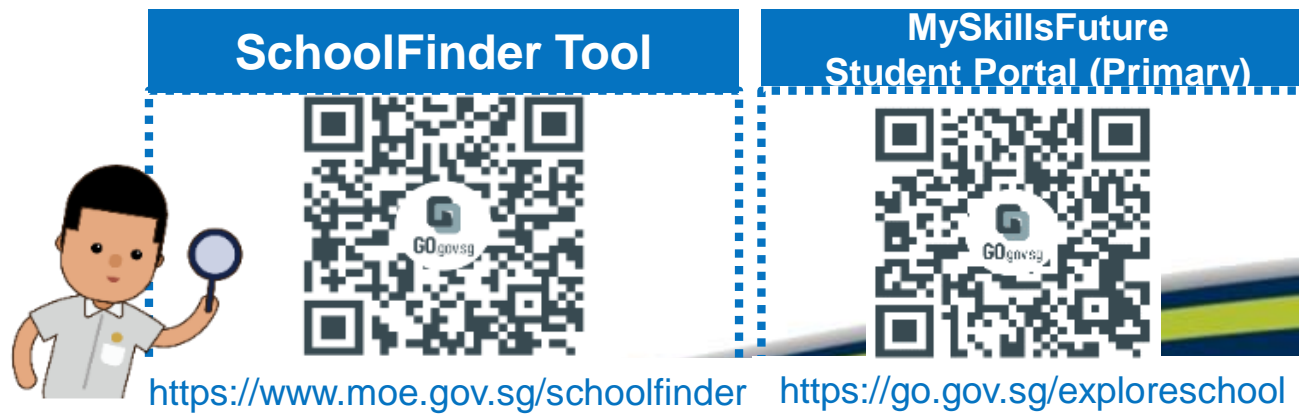
**PUNGGOLGREEN**  
PRIMARY SCHOOL

Future-Ready Leaders With The Heart For Others



# PSLE SCORE RANGES FOR ALL SECONDARY SCHOOLS

- Use the PSLE Score ranges as a reference alongside other important factors, such as the school's distinctive programmes, Co-Curricular Activities (CCA), culture, ethos, and proximity to home when shortlisting school choices that would best fit a student's educational needs.
- The 2021 PSLE Score ranges for individual secondary schools will be available for your reference on <https://moe.gov.sg/schoolfinder> and <https://go.gov.sg/exploreschools> by end March 2022. They reflect the PSLE scores of the student posted into these schools at the 2021 SI Posting Exercise.
- A school's PSLE Score range (including Cut-Off-Point) for a particular year is not pre-determined before the posting, and may vary from year to year, depending on the cohort's PSLE results and their school choices in that year's SI Posting Exercise.



# PSLE SCORE RANGES FOR INDIVIDUAL SECONDARY SCHOOLS

The **PSLE Score range** refers to the **PSLE Score** of the first and last student admitted to a particular school in the previous year via the **SI Posting Exercise**. This shows the range of student profiles who enter each school.

## Example

XX Secondary School  
PSLE Score range of 2021

Express	15 – 20
Normal (Academic)	21 – 24
Normal (Technical)	25 – 28

PSLE Score of the first student posted into the school in the respective courses

PSLE Score of the last student posted into the school in the respective courses [i.e., the school's Cut-Off Point (COP)]



PUNGGOLGREEN  
PRIMARY SCHOOL

# USE OF HIGHER CHINESE LANGUAGE (HCL) FOR ADMISSION INTO SPECIAL ASSISTANCE PLAN (SAP) SCHOOLS



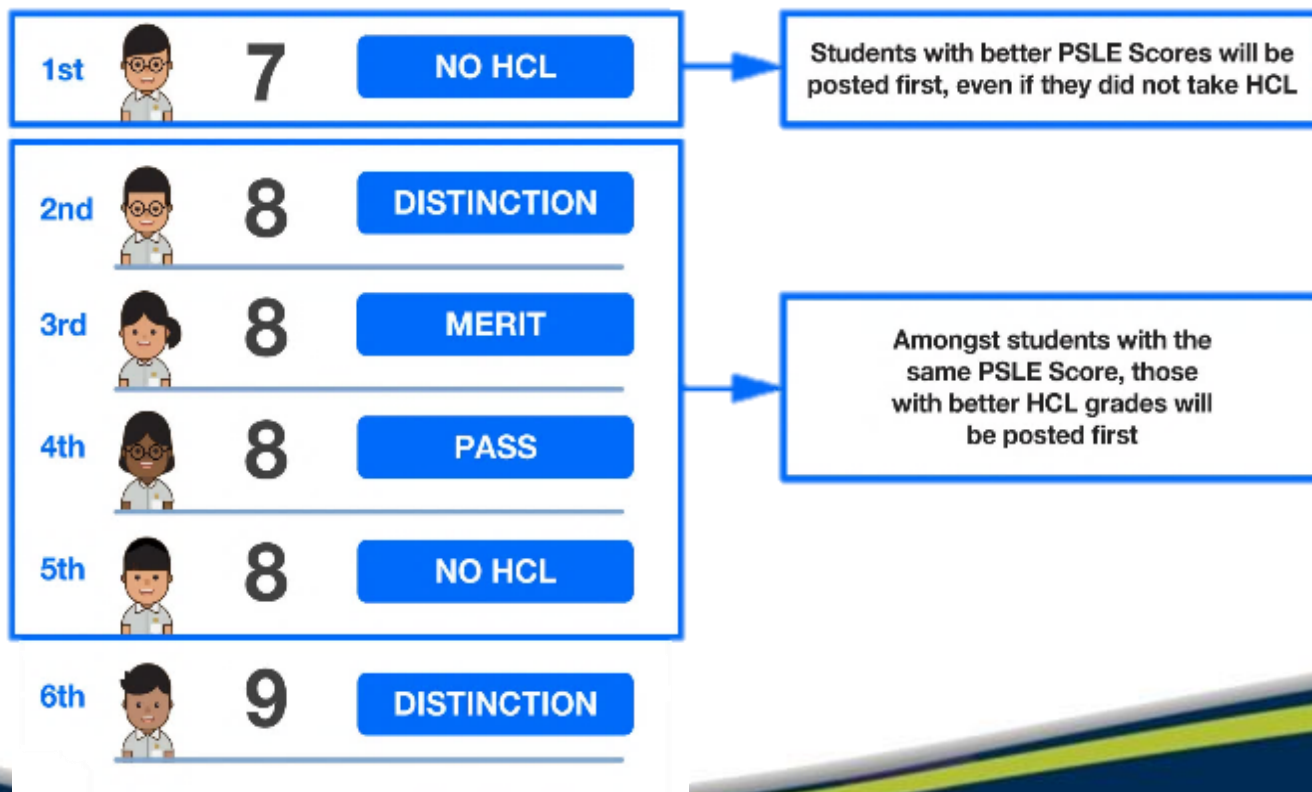
**PUNGGOLGREEN**  
PRIMARY SCHOOL

Future-Ready Leaders With The Heart For Others

# HCL POSTING ADVANTAGE FOR ENTRY TO SAP SCHOOLS WILL CONTINUE

Students who obtained a Distinction/Merit/Pass for HCL at the PSLE and an overall PSLE Score of 14 or better will receive a posting advantage when applying to SAP schools.

Students will be considered for admission to SAP schools in the following order:



- Students' HCL results are denoted as 'D' (Distinction), 'M' (Merit) or 'P' (Pass).
- Students who obtain (i) a Distinction / Merit / Pass in HCL and (ii) a PSLE Score of 14 or better are eligible for posting advantage to SAP schools.
- Students are ranked taking into account their performance in HCL.
- This posting advantage applies before the tie-breakers for SI Posting.



**PUNGGOLGREEN**  
PRIMARY SCHOOL

# EXAMPLE OF A SAP SCHOOL's PSLE SCORE RANGE

While students need not take HCL to enter SAP schools, students who pass HCL receive a posting advantage for admission. To reflect this, the PSLE Score ranges of SAP schools include the HCL grades of the first and last student admitted in the previous year via S1 Posting.

## Example

XX Secondary School  
PSLE Score range of 2021

Express	5 (D) – 12 (P)
Normal (Academic)	
Normal (Technical)	

PSLE Score and HCL grade of the first student posted into the school in the Express course

PSLE Score and HCL grade of the last student posted into the school in the Express course [i.e. the school's Cut-Off Point (COP)]



PUNGGOLGREEN  
PRIMARY SCHOOL

Future-Ready Leaders With The Heart For Others



# Direct School Admission (DSA-SEC)

- Allows students to seek admission to a secondary school on the basis of talents and achievements in specific areas before taking the PSLE
- Enables students to enter academic and non-academic programmes in secondary schools that can develop the students in these areas (e.g. sports and games, aesthetics, leadership, uniform groups etc.)
- Every secondary school offers distinctive programmes and sets its own selection process and criteria to admit up to 20% of its students with talents who can be further developed by their programmes.



PUNGGOLGREEN  
PRIMARY SCHOOL



# Selection Criteria

Schools have different selection criteria, but in general, applicants must be able to demonstrate a high level of ability in that talent area.

For example, your child might have:

- represented the school in a CCA
- held a prominent role in a play or performance
- Shown talent in oratorical skills or creative writing
- held a leadership role in class or a CCA

**Note:** *Academic results and non-academic school-based achievements will be shared automatically to the school that you have chosen*



**PUNGGOLGREEN**  
PRIMARY SCHOOL

# Who can apply?

Primary 6 students can apply for DSA-Sec based on a wide-range of talents, including:

- Sports and games
- Visual, literary and performing arts
- Debate and public speaking
- Science, mathematics and engineering
- Languages and humanities
- Uniformed groups
- Leadership (for example, prefects)

*Up to 3 choices and in  
3 talent areas.*



**PUNGGOLGREEN**  
PRIMARY SCHOOL

# Direct School Admission (DSA-SEC)

Is the DSA-Sec right for my child?



If your child has specific **talent in an area** which a secondary school offers the DSA-Sec in,

and is **passionate** about and **committed** to developing his/her strengths and interests

**DSA-Sec can support his/her development in that talent area.**



**PUNGGOLGREEN**  
PRIMARY SCHOOL

Future-Ready Leaders With The Heart For Others

## If your child has a DSA Confirmed Offer, does it mean that his PSLE results will not matter?

- His PSLE results will still be **used to determine the secondary school course he/she is eligible** for [i.e. Express, Normal (Academic), Normal (Technical)]
- Even if he has a confirmed offer, he **must qualify for a course offered by the school** to be successfully admitted through the DSA.

### Note

If your child is admitted through DSA-Sec, they must commit to their chosen school for the duration of the programme. They are not allowed to transfer to another secondary school.



# Direct School Admission (DSA-SEC)

## Which school should my child apply to?

- Look for a school with **programmes that match your child's strengths and interests**
  - Schools are looking out for students whose interests and talents they can develop further.
  - Learn more about the secondary school's **pace of learning** and overall range of programmes
- **Get the latest information** about what each school offers by:
  - Visiting schools' websites
  - Attending schools' Open Houses to also experience their environments and cultures
  - Visiting the MOE's DSA-Sec website (will be updated around April 2022)



**PUNGGOLGREEN**  
PRIMARY SCHOOL

Future-Ready Leaders With The Heart For Others

# Direct School Admission (DSA-SEC)

## DSA-Sec Application Portal

- To encourage students to tap on the expanded DSA opportunities, the DSA-Sec application process has been simplified
- Students now apply for DSA through a centralised DSA-Sec Application Portal, using a common application form.
- The portal will simplify and streamline the DSA application process, making it convenient for all students.



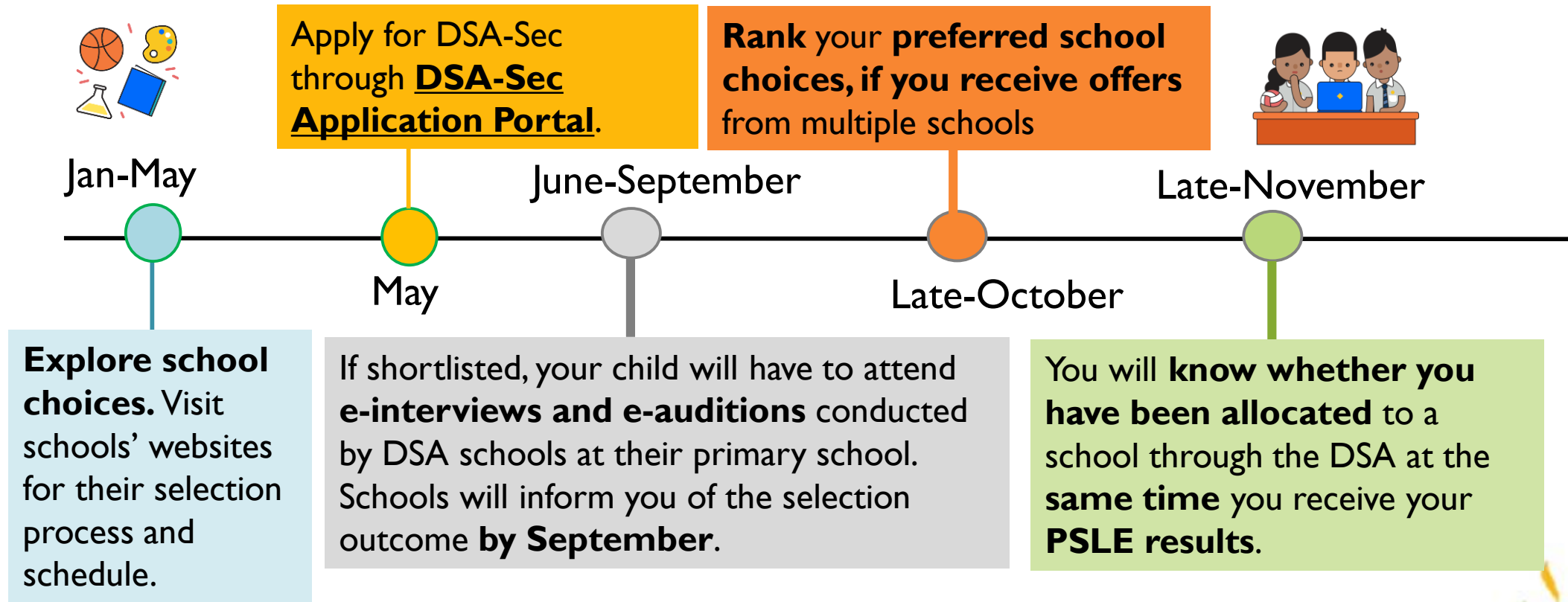
**PUNGGOLGREEN**  
PRIMARY SCHOOL

Future-Ready Leaders With The Heart For Others



# Direct School Admission (DSA-SEC)

## Timeline for a DSA-Sec Exercise at Primary 6



**PUNGGOLGREEN**  
PRIMARY SCHOOL

**Future-Ready Leaders With The Heart For Others**

# A Summary of 2021 DSA-SEC Applications in PGPS

Number of applicants: 58

Total Number of students  
with at least 1 DSA-Sec Offer: 13

Top 3 Talent areas  
(based on applications):

1) Sports and Games (62)

2) Leadership and  
Uniformed groups (50)

3) STEM (20)



**PUNGGOLGREEN**  
PRIMARY SCHOOL

# **PGPS PSLE Performance 2021**



**PUNGGOLGREEN**  
PRIMARY SCHOOL

**Future-Ready Leaders With The Heart For Others**

# Eligibility to Secondary School (Standard)

2020	2021
98.14%	99.58%



**PUNGGOLGREEN**  
PRIMARY SCHOOL

Future-Ready Leaders With The Heart For Others

# Eligibility to Secondary School (Foundation)

2020	2021
92.7%	100%



**PUNGGOLGREEN**  
PRIMARY SCHOOL

Future-Ready Leaders With The Heart For Others



# Popular Secondary School Choices of PGPS Students

**Edgefield  
Secondary School**

**Yusof Ishak  
Secondary School**

**Greendale  
Secondary School**

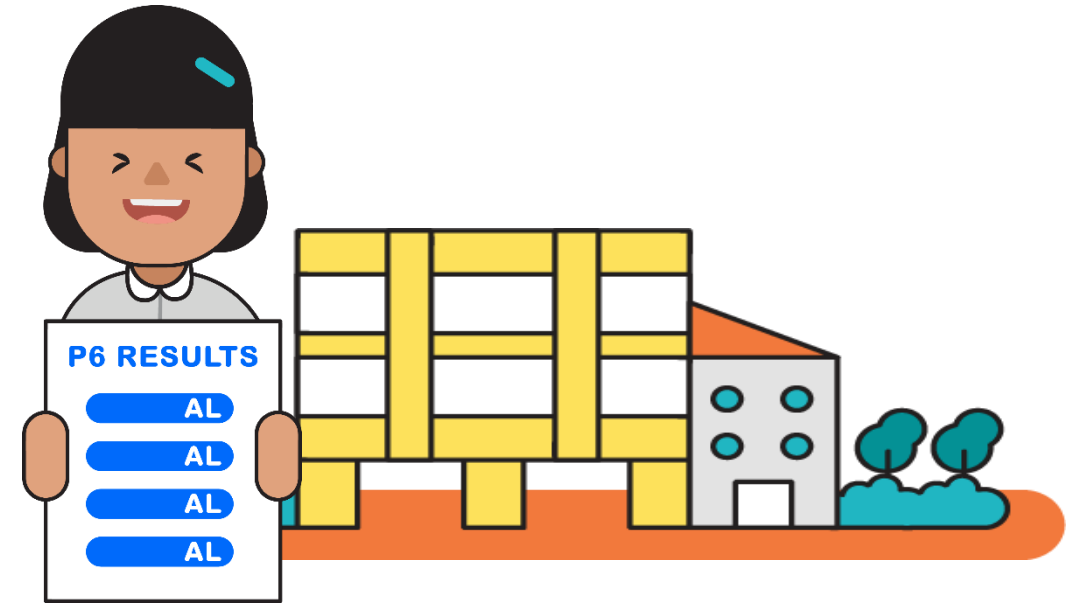
**Nan Chiau High  
School**



**PUNGGOLGREEN**  
PRIMARY SCHOOL

**Future-Ready Leaders With The Heart For Others**

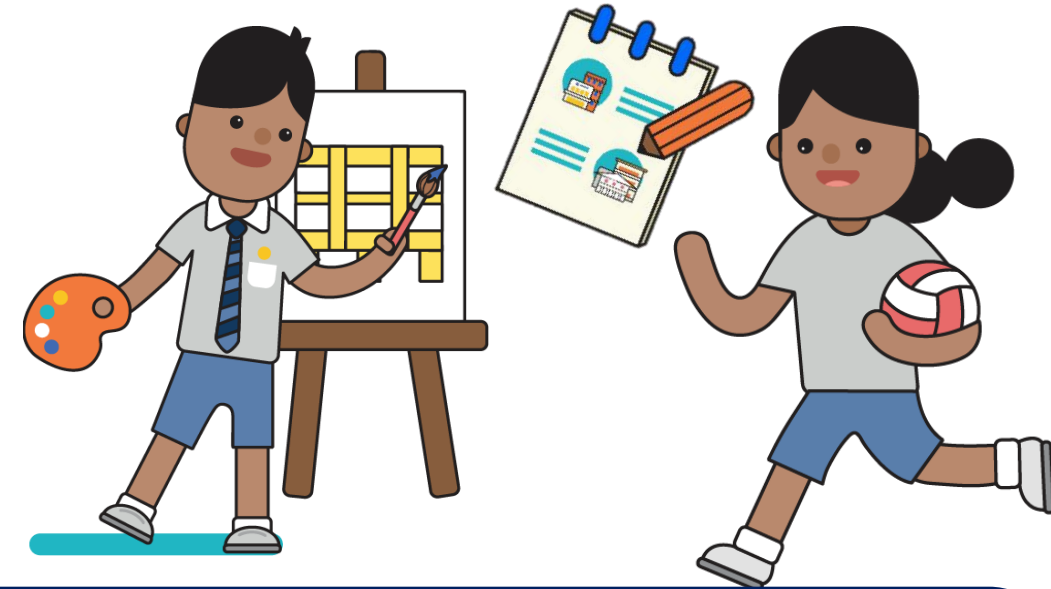
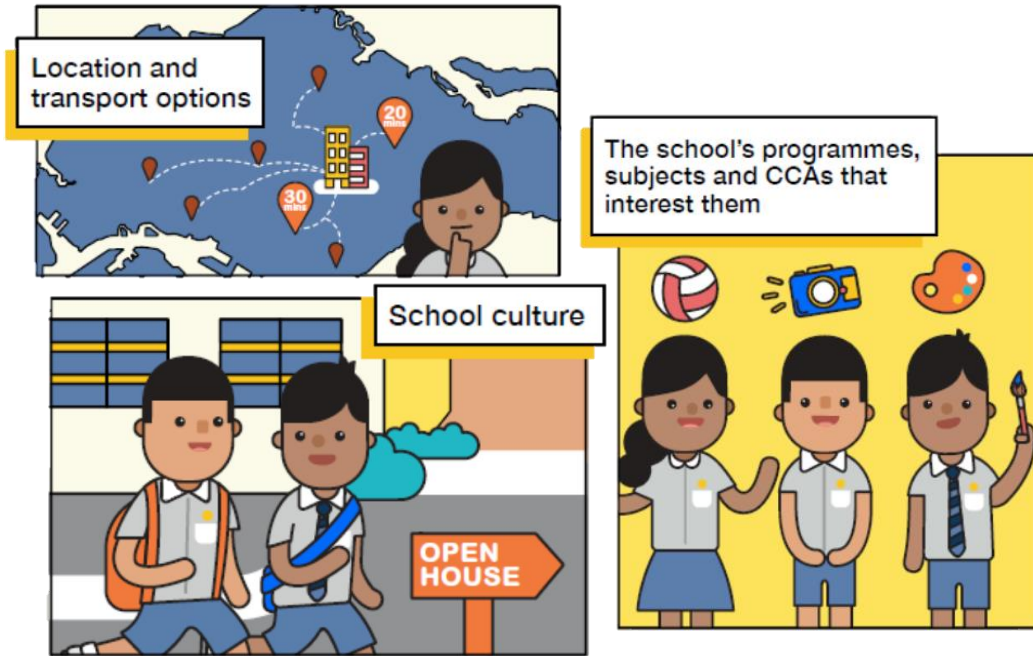
# PREPARING FOR THE S1 POSTING EXERCISE



Use all 6 options with a range of Cut-off Points as this will increase your child's chances of being posted to a school of his/her choice.

Take reference from schools' PSLE Score ranges, which serves as a guide for you and your child to shortlist school choices. Consider at least 2-3 schools where your child's PSLE Score is better than the school's Cut-off Point.

# PREPARING FOR THE S1 POSTING EXERCISE



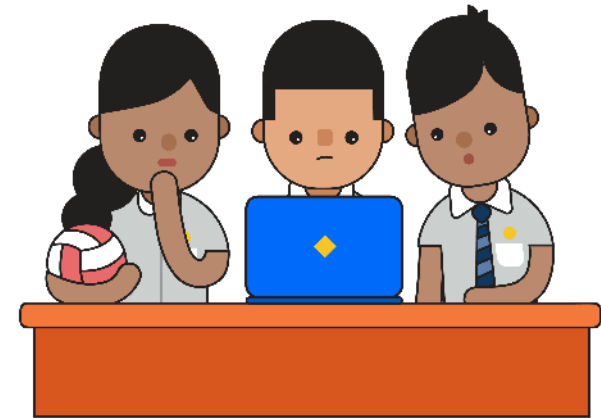
Shortlist schools that offer programmes that cater to the your child's strengths and interests, and that provide suitable learning environments.

Rank your child's preferred school higher in the school choice order. This will increase your child's chances of being posted to that school, if tie-breakers are required.

# PREPARING FOR THE S1 POSTING EXERCISE

Students will be guided by the YH and Form Teachers in Term 2 Week 2 during Form Teacher Guidance Period to find out more about secondary schools and matching them to students' interests, strengths and abilities.

Students will be given a Journey Map handout and six School Explorer cards (as seen in the next 2 slides).



**PUNGGOLGREEN**  
PRIMARY SCHOOL



# USING THE JOURNEY MAP

NAME: \_\_\_\_\_ CLASS: \_\_\_\_\_

## YOUR Journey to Secondary School Starts Here



**What's new about the PSLE? How should I prepare?**

When you get your results, you will receive a PSLE Score (instead of the 3-digit T-scores of the past). Your PSLE Score will help you gain entry into secondary school, and you can choose your school from a variety of different ones.

How will you choose? It's not just about the school's Cut-Off Point! Read on to find out more.

All the best!

Show your journey with your classmates and friends! Take a photo with your filled-out handbook, get an adult to share it on Instagram, and tag us @moesingapore

Ministry of Education Singapore

Need more information? Check out the PSLE-PSBB microsite

## DISCOVER JAN TO AUG

The first step is to think about your interests, strengths and abilities. Circle your favourites below or list others.



I have these interests, strengths and abilities:

\_\_\_\_\_

\_\_\_\_\_

\_\_\_\_\_

\_\_\_\_\_

\_\_\_\_\_

Ask a friend or adult what they think your strengths and abilities are:

\_\_\_\_\_

\_\_\_\_\_

\_\_\_\_\_

\_\_\_\_\_

\_\_\_\_\_

## EXPLORE JAN TO AUG

Find out more about the schools around you to see which ones may be a good fit for you!

### PART A: RESEARCH

What are the schools near your home? Do their programmes and COAs match your interests?

Take a look at their websites or visit the schools if you can. What does the school uniform look like? What else is interesting about the school? Find out and fill up the School Explorer cards!

Fill out your cards and see which schools you have more interest in with the chart below.

School Explorer Card	
Name of secondary school: _____	
School uniform: _____	Cool COAs: _____
Time to school: _____	School programmes: _____
at this school: _____	_____

### PART B: YOUR FIRST PICKS

Write down or draw the schools that left an impression on you, and show this to a parent or guardian for a discussion.



## PREPARE SEP

The PSLE is here! Work hard but take breaks and take care of yourself too. Colour in the activities that you've done below.



All the best for your exams!

Here are more tips from School Principals

## VISIT OCT

Doodle or write down some key points from your visits to school open houses.

Is this a school you explored earlier on the previous page? Does it develop your strengths, interests and abilities? Tell an adult around you.

For open house details, check out Schooling from the inside of the year onwards

Learn about changes to Sec 1 Posting

## LIST NOV

Now that you have all the information, rank your pick of schools below.

1. \_\_\_\_\_

2. \_\_\_\_\_

3. \_\_\_\_\_

4. \_\_\_\_\_

5. \_\_\_\_\_

6. \_\_\_\_\_

### Tip!

Choice order of school matters. Put the school you want to get into most at the top.

Check your school posting results in Dec and...

More tips on shortlisting schools

Here's how to submit your 6 school choices

## KEEP IN TOUCH!

Your autograph page



## READY, SET, GO! DEC

There's so much to look forward to in secondary school! Can you find them here?

Z B A C F O P M  
N C T L U L F R  
C V E A T B S O  
A U A S O S T F  
F M C S C S C I  
A Y H R A O E N  
F Y E O L P J U  
R F R O T J B M  
I H S M K O U Y  
E G V Y E J S B  
N B P E N C J S  
D X H C S W T S  
S O K I G O E Y  
Z N E E T N A C







# HOW DO YOU USE THE SCHOOL EXPLORER CARDS?



*Visit the secondary schools' websites*



*Talk to your parents and teachers*



*Visit schools during the Open House*



*Find out your travel routes to the different schools*





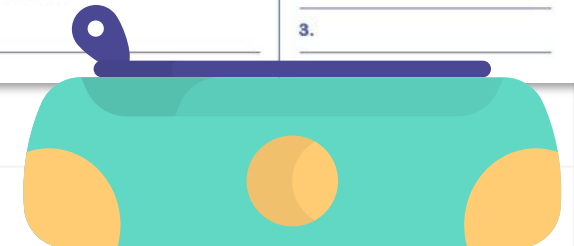
*Find out the time it takes to travel to the schools*



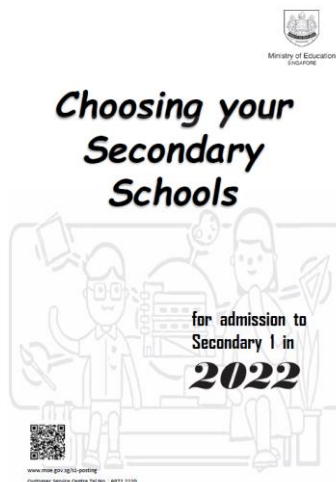
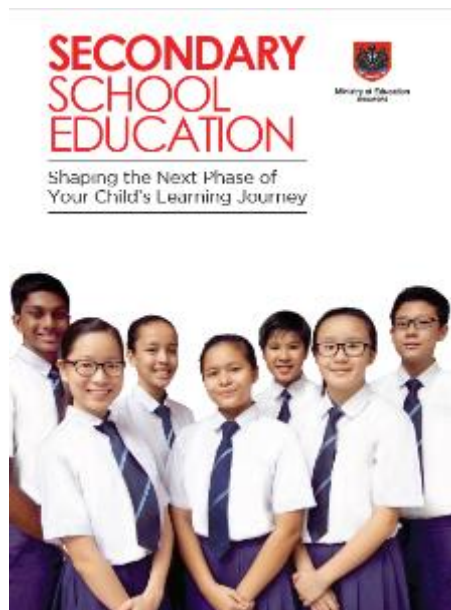
*Note the schools' programmes and CCAs on your cards*

*Each student will receive  
6 School Explorer Cards.*

<b>School Explorer Card</b>  <small>Visit SchoolFinder to learn more about our schools</small>	Name of secondary school:	
	<b>School uniform:</b> <small>Draw in this space</small>	<b>Cool CCAs:</b> 1. _____ 2. _____ 3. _____
<b>I ♥ this school:</b> ♥ ♥ ♥ ♥ ♥	<b>Estimated travel time to school:</b>  _____  _____  _____  _____	
<b>What I love about this school:</b> _____	<b>School programmes:</b> 1. _____ 2. _____ 3. _____	



# PREPARING FOR THE S1 POSTING EXERCISE



- Release of **PSLE** results
- Submission of **Secondary 1 Option Form**



- Release of **S1 Posting** results



**OCTOBER**

**NOVEMBER**

**DECEMBER**



**PUNGGOLGREEN**  
PRIMARY SCHOOL

Future-Ready Leaders With The Heart For Others

# TIPS FOR PARENTS!

Be open and flexible when discussing your child's preferences, needs and choices.

Manage your own expectations and do not project these expectations onto your child.

Have regular conversations with your child to understand more about his/her interests and aspirations.

Affirm your child and offer support when he/she shares his/her plans with you.





# Strategies to Achieve Excellence

- Set high expectations but encourage small progress and affirm good effort
- Plan your holidays (June last week, last 2 days of Sept)
- Set routines and adopt good habits such as setting limits to use of handphones and playing of computer games



**PUNGGOLGREEN**  
PRIMARY SCHOOL

Future-Ready Leaders With The Heart For Others



# Strategies to Achieve Excellence

- Adopt a whole family approach and encourage a healthy lifestyle
- Talk to your child about his/her school of choice – Make school visits
- Work closely with your child's teachers
- Balance and manage tuition work (if any)



**PUNGGOLGREEN**  
PRIMARY SCHOOL

# FIND OUT MORE ON THE PSLE-FSBB MICROSITE!



<https://go.gov.sg/pslefsbb>



**PUNGGOLGREEN**  
PRIMARY SCHOOL

**Future-Ready Leaders With The Heart For Others**

# OTHER RESOURCES

1

## SchoolFinder Tool

SCHOOL  
FINDER



<https://go.gov.sg/secschoolfinder>

2

## “Welcome to Secondary School” video



<https://go.gov.sg/welcome-to-secondary-school>

3

## Secondary School Education Booklet



<https://go.gov.sg/p/sle-sec-sch-brochure>

4

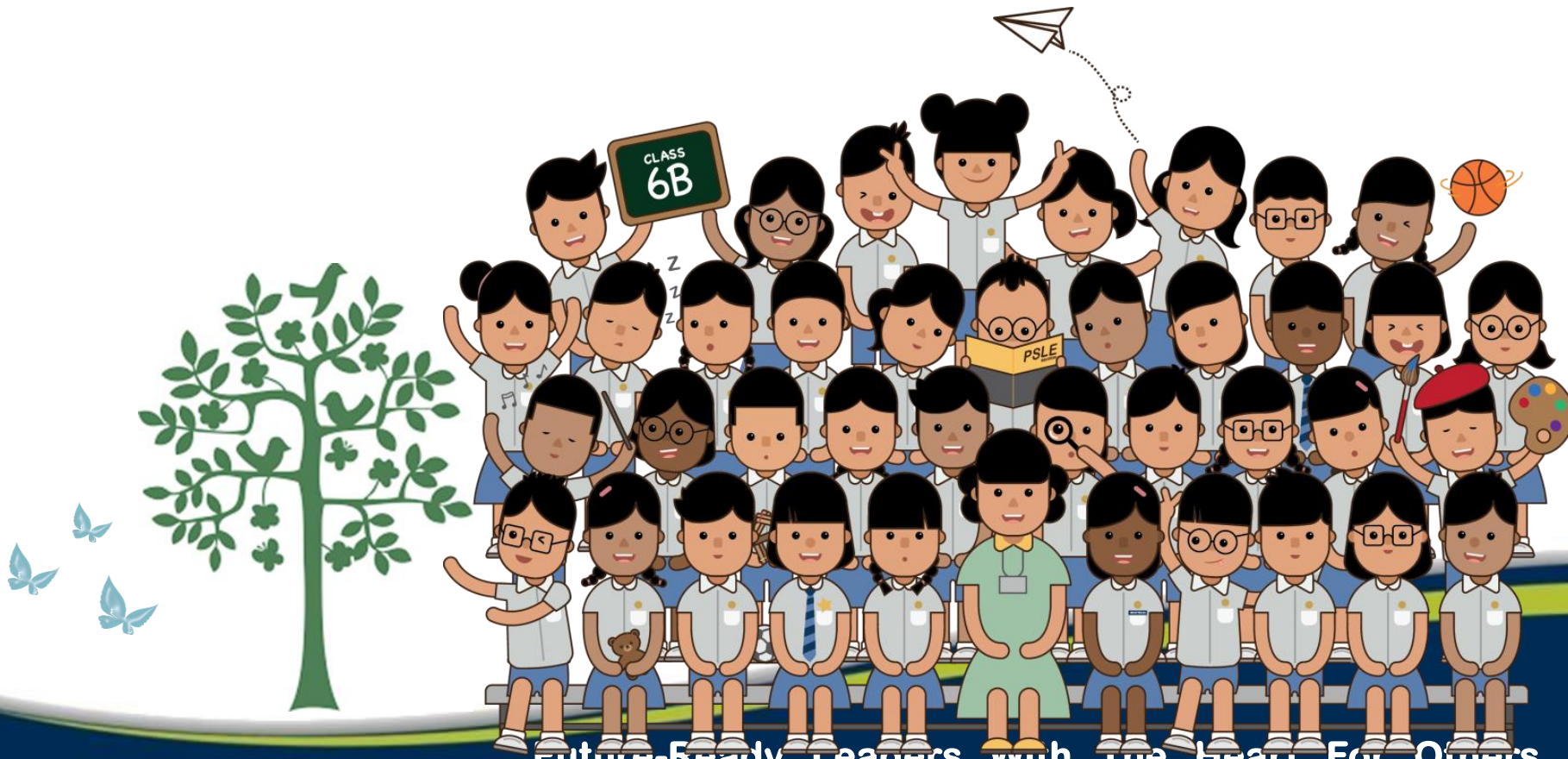
## ECG Parent Guide



<https://go.gov.sg/parent-guide>



**THANK YOU &  
HAVE A LOVELY WEEKEND AHEAD!**



**PUNGGOLGREEN**  
PRIMARY SCHOOL

**Future-Ready Leaders with the Heart For Others**