

WELCOME TO PGPS Primary 5 Parents' Briefing

Monday, 3 February 2025



Future-Ready Leaders with the Heart for Others



PUNGGOLGREEN
PRIMARY SCHOOL

Outline of Briefing



PSLE Scoring & Secondary 1 Posting Systems



Direct School Admission (DSA)



Talent Development @PGPS



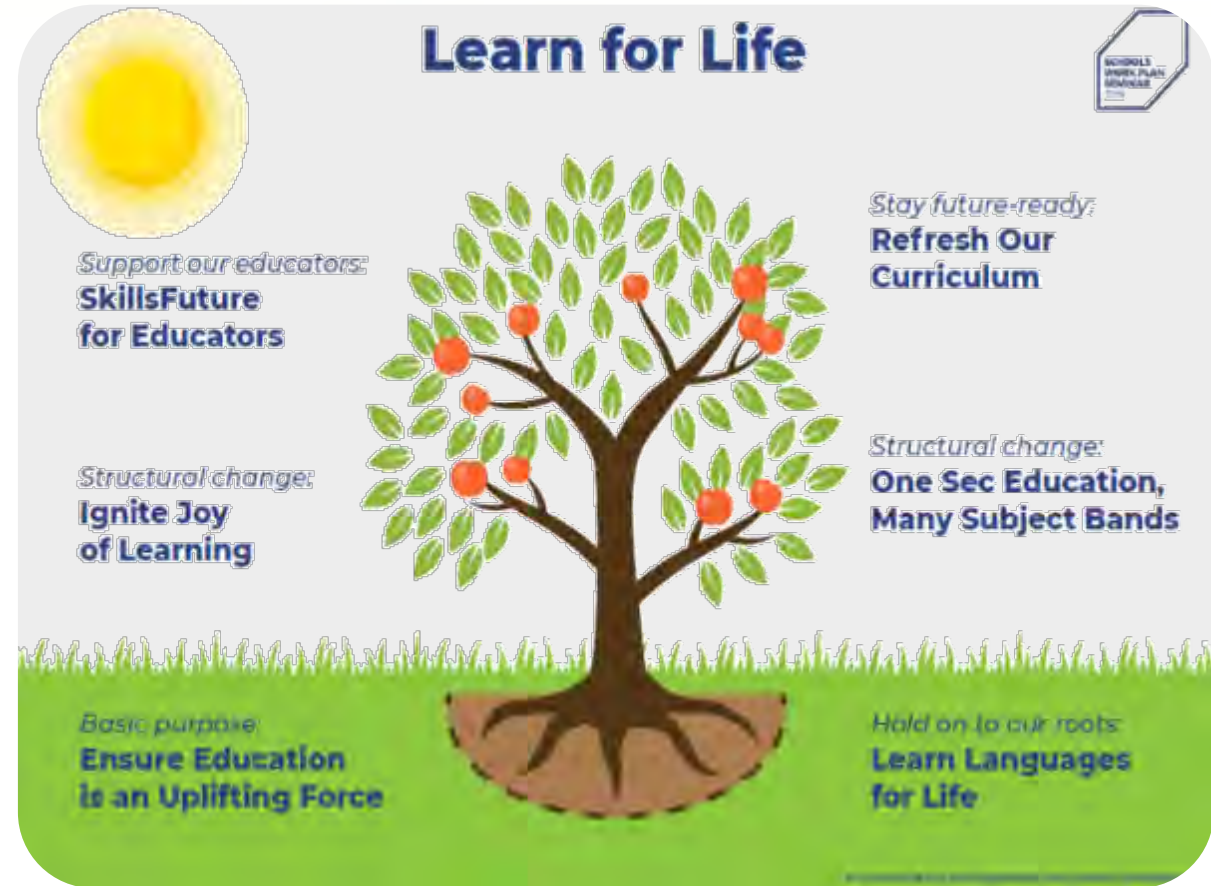
Frequently Asked Questions (FAQs)



'Learn for Life' Phase of Education System

The current 'Learn for Life' phase of our education system aims to:

1. Develop diverse strengths and interests of our students
2. Nurture an intrinsic motivation to learn
3. Ensure every child has a good start in life, and can access opportunities at every stage of their lives



Nurturing the Joy of Learning

1. Reduction of School-Based Assessment Load
 - Holistic assessments in primary schools
 - Removal of mid-year exams for P3 to P6
2. Changes to PSLE Scoring
 - Reduce overly-fine differentiation between students & unnecessary competition
3. Broadened Definition of Merit in Admissions
 - Expansion of Direct School Admission (DSA) & refinement to DSA policy
 - Aptitude-based admissions in IHLs





PSLE SCORING & SECONDARY 1 POSTING SYSTEMS



Future-Ready Leaders with the Heart for Others



PUNGGOLGREEN
PRIMARY SCHOOL

The PSLE remains a useful checkpoint...

- The PSLE remains a useful checkpoint for us to:
 - ❑ Understand where our children are at in their learning after six years of primary school
 - ❑ Gauge our children's learning needs so that they can progress to a secondary school and take subjects at a suitable level

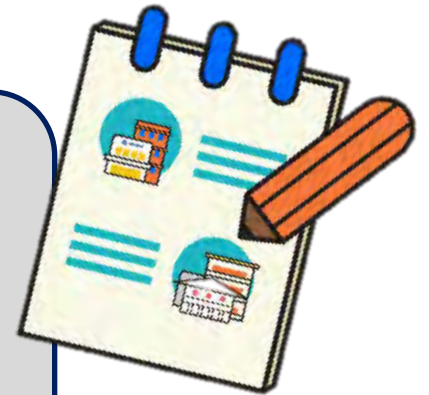


Aims of PSLE Scoring System 2021



Reduce fine differentiation
at a young age

Recognise students' level of
achievement, regardless of how
their peers have done



The PSLE Scoring System 2021

- PSLE Scores using Achievement Levels since 2021 reflects how well students have done relative to learning objectives of the curriculum
- There are 29 possible PSLE Scores:
 - Students' examination scores are less finely differentiated, and more students will have the same PSLE Score.
 - There are more schools with the same cut-off point.
 - Students have a wider range of schools to choose from depending on their strengths and interests, unique school programmes, and CCAs.



How the PSLE Scoring System Works

- Students' Achievement Levels (AL) for each subject reflects their level of achievement, rather than how they have performed relative to their peers.
- The PSLE Score is obtained by adding ALs of four subjects and ranges from 4 to 32, with 4 being the best.
- Since last year, all Sec One students have started taking subjects at three subject levels: G1, G2, G3 (G stands for General), based on their aptitude for and interest in the subjects.

ENGLISH	AL3
MOTHER TONGUE	AL2
MATHEMATICS	AL1
SCIENCE	AL2
<hr/>	
PSLE SCORE: 8	

AL	RAW MARK RANGE
1	≥ 90
2	85 – 89
3	80 – 84
4	75 – 79
5	65 – 74
6	45 – 64
7	20 – 44
8	< 20



How the PSLE Scoring System Works

Foundation Level AL Reflected on Result Slip	Foundation Raw Mark Range	Equivalent Standard Subject AL	Standard Raw Mark Range
A	75 – 100	6	45-64
B	30 – 74	7	20-44
C	< 30	8	< 20

- For Sec 1 posting, Foundation level AL A to AL C will be mapped to AL 6 to AL 8 of Standard level subjects respectively, to derive a student's overall PSLE Score.
- This mapping is based on the learning and assessment load of the subjects, and informs students of their readiness to access the curriculum at the secondary level.



How the Secondary 1 Posting System Works

PSLE Score	Posting Group	Subject level for most subjects
4-20	3	G3
21 and 22	2 or 3	G2 or G3
23 and 24	2	G2
25	1 or 2	G1 or G2
26 - 30 (with AL 7 in EL and MA)	1	G1



From Primary to Secondary School



S1 Posting
Exercise



Direct School
Admission
- Secondary
(DSA - Sec)



PUNGGOLGREEN
PRIMARY SCHOOL

From Primary to Secondary School



S1 Posting Exercise

- Based on a student's PSLE score (Total AL score)
- Most students are placed in secondary schools through the S1 posting process, which takes place once the Primary School Leaving Examination (PSLE) results are released.



From Primary to Secondary School



Direct School
Admission
- Secondary
(DSA - Sec)



- Allows students to apply to schools before taking the PSLE
- Based on a diverse range of talents and achievements in specific academic subjects or non-academic areas, beyond what the PSLE recognises
- Allows students to access secondary school programmes to develop their interests and talents





DIRECT SCHOOL ADMISSION - SECONDARY (DSA-SEC)



Future-Ready Leaders with the Heart for Others



PUNGGOLGREEN
PRIMARY SCHOOL

The Direct School Admission (DSA) Scheme

- The Direct School Admission (DSA) scheme was introduced in 2004 by the Ministry of Education (MOE) to cultivate a flexible and broad-based education system in Singapore that looked beyond grades.
- The scheme gives secondary schools and Junior Colleges (JCs) greater flexibility to select and admit students based on a holistic assessment of both their academic and non-academic talents and achievements.
- It allows students to be recognised for their strengths in specific talent areas, such as sports, performing arts, or leadership, alongside their academic performance.



What is Direct School Admission - Secondary (DSA-Sec)?

- P6 students can gain direct entry to certain secondary schools based on their talent in sports, CCAs and specific academic areas, etc., before taking their PSLE
- If your child is admitted to a secondary school through DSA-Sec, they are not allowed to:
 - Submit school choices during the Secondary 1 (S1) posting process.
 - Transfer to another school. They must commit to their chosen school for the duration of the programme.



What is Direct School Admission - Secondary (DSA-Sec)?

- However, the DSA-Sec is not a pathway that suits every student.
- To determine if DSA-Sec is an appropriate pathway for your child, you should carefully consider your child's strengths and interests, and the school's programmes and their ability to develop specific talent.
- In general, schools can admit up to 20% of its students based on their own school-based selection processes and criteria in their identified talent areas.



What is Direct School Admission - Secondary (DSA-Sec)?

- P6 students can apply for DSA-Sec based on a wide-range of talents, including:
 - Sports & Games
 - Visual, Literary & performing arts
 - Debate & Public Speaking
 - Science, Mathematics & Engineering
 - Languages & Humanities
 - Uniformed Groups
 - Leadership



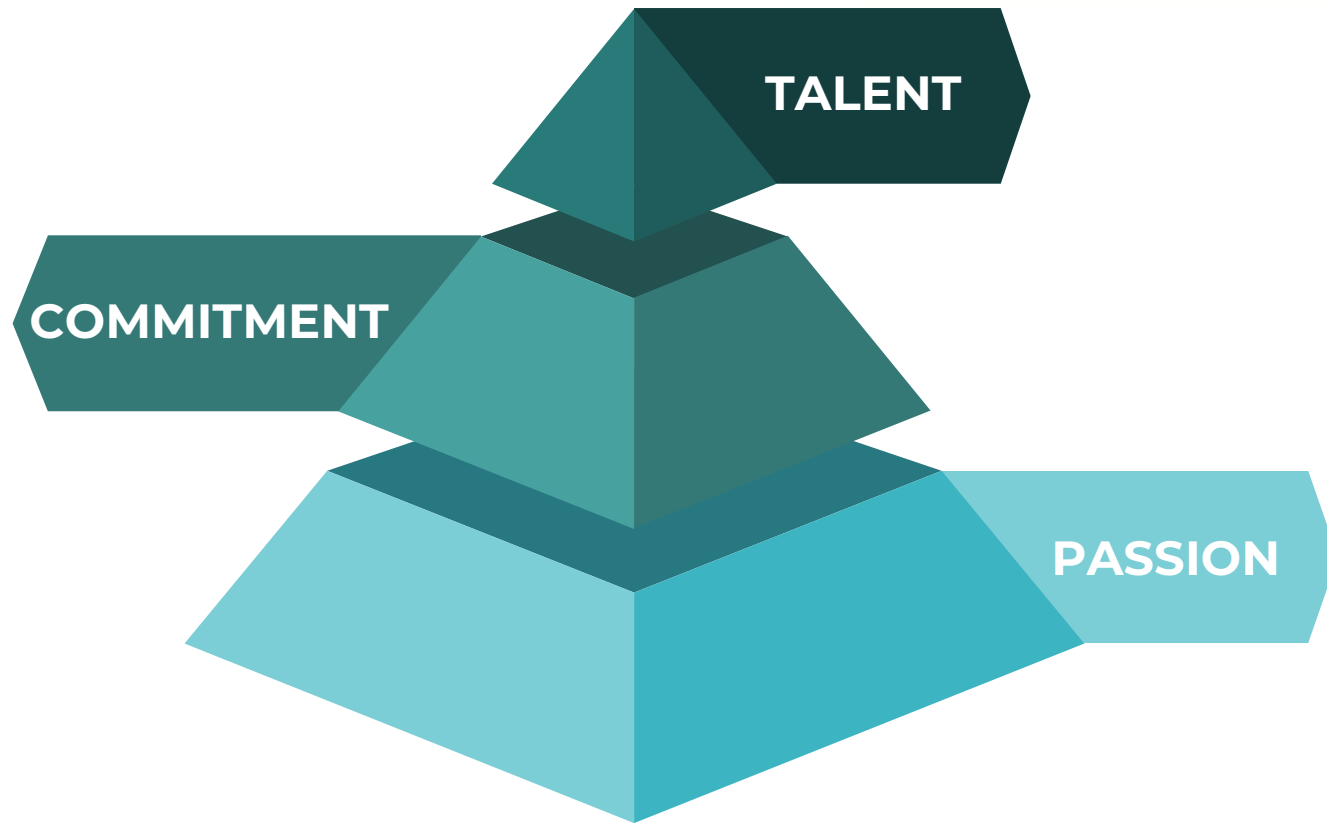
If DSA-Sec application only starts at P6, why now?

We believe that:

- Every child deserves the chance to express their passion clearly.
- It takes time to have more in-depth discussions with your child about their strengths, interests & talent.
- There is value in letting your child own the decision.



Is DSA-Sec suitable for your child?



DSA can support your child in developing his/her talent if your child:

- Has a strong passion in specific area/s of learning.
- Can stay committed to developing this interest.



What are DSA schools looking for?

Talent, Passion & Commitment

- Applicant should have records of **participation** of &/or **achievements** in his/her chosen DSA area.
- Applicant may be put through selection interviews, aptitude tests, auditions or trials for schools to identify & select students based on **strengths, fundamentals** and/or **assessed potential**.

Positive Personal Qualities & Learning Dispositions

- Schools may look at records of applicant's **Leadership & VIA involvement** or **character development related awards**.
- Schools may also conduct interviews or scenario tests.

Right Academic Fit

- Schools may look at applicant's **primary school results (in particular, EOYP5 overall)** or **conduct interview** to assess if applicant will be able to cope with the demands of both his/her academic learning and chosen area of development.

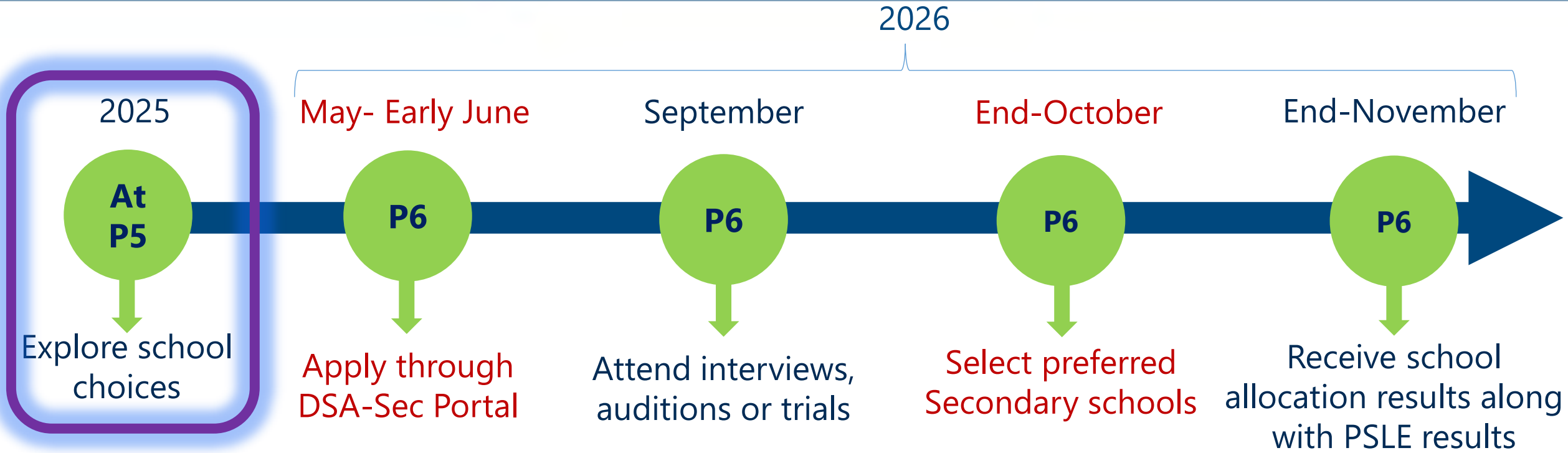


What are DSA Schools looking for?

- The selection process differs across schools, and across the different DSA areas.
- Applicants who do not have prior experience may also apply as schools will assess applicants based on their selection criteria, which may include assessing the potential of the applicants.



DSA Overall Timeline



Note: If your child is admitted through DSA-Sec, they MUST COMMIT to their chosen school for the duration of the programme. They are NOT ALLOWED to submit school choices during S1 Posting or transfer to another secondary school.



Get the DSA Conversation Started...

1. Guide your child to discover their strengths & interests
2. Find out more about the wide range of DSA areas offered by different schools
3. Discuss & shortlist possible schools with DSA area/s that likely can support your child's development, and academic learning demands that match his/her academic learning abilities
4. Start a portfolio and keep proper documentation of all relevant involvements & achievements.

Note: No secondary will require their applicants to submit any testimonial from their primary school.



Features of MOE's DSA-Sec Portal (Accessible from May – Early June)

- 1 Enter website <https://go.gov.sg/apply-dsa-sec>
- 2 Login using Singpass
- 3 Look for the child's particulars and click "APPLY" to start the application process.
- 4 Indicate 3 choices of talent areas (Choice order DOES NOT matter)
*Maximum of 2 choices used to apply to same school of 2 different talent areas.
- 5 Follow prompts on the website to proceed and submit the online application.
- 6 Download PDF copy of successful submission of application for your reference.



Possible DSA outcomes

- 1) Confirmed Offer (CO): Your child has secured a place in his/her chosen DSA school, but final eligibility will depend on their Posting Group (PG), which is determined by their PSLE results.
- 2) Waitlist (WL): Your child will be considered only if students with a Confirmed Offer decide not to enroll in that school. Allocation will then be based on his/her position on the school's Wait List.
- 3) Unsuccessful: Your child's application was unsuccessful. However, if he/she still wishes to enter the same secondary school, he/she can apply through the Secondary 1 Posting Exercise, provided his/her PSLE results meet the school's cut-off score.





TALENT DEVELOPMENT @ PGPS



Future-Ready Leaders with the Heart for Others



PUNGGOLGREEN
PRIMARY SCHOOL

School Philosophy & Motto



School Philosophy

Every Child Can Succeed,
Every Staff Matters

School Motto

Be the Best that
We Can Be!



PUNGGOLGREEN
PRIMARY SCHOOL

Beliefs about Education @PGPS

Every child is unique. Given sufficient **support** and/or **challenge**, every child can learn and wants to succeed.



STUDENTS

When learning is **fun** and **joyful**, students will be more engaged. They will be more intrinsically motivated when the learning is **authentic** and they experience success.



LEARNING

Students will succeed when they know their teachers **care** and **believe** in them. The role of a teacher is to **bring out the best in every child**.



TEACHERS

A **positive** and **safe** environment will promote Learning, Innovation and Creativity.



ENVIRONMENT

Good Home-School partnership strengthens students' learning. The community has rich resources that can help us enhance the quality of education we provide.



PARENTS & COMMUNITY



PUNGGOLGREEN
PRIMARY SCHOOL

Beliefs about Education @PGPS

Every child is unique.
Given sufficient
support and/or
challenge, every
child can learn and
wants to succeed.



STUDENTS

How do we help our students
succeed by growing their
strengths and talents?



PUNGGOLGREEN
PRIMARY SCHOOL

Talent Development @ PGPS: How are our Students Supported?



Guided Exploration

G Students will be guided by their teachers on secondary school options and converse with them about their strengths and aspirations.

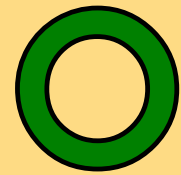


Responsive Ecosystem

R Teachers may offer help to students who need additional support in selecting suitable schools or applying for DSA. This includes providing advice during the preparation process.



Talent Development @ PGPS: How are our Students Supported?



Opportunities for Exposure

Students will be given opportunities to hear and interact with secondary school students, so they can learn about the learning environments and programmes (e.g. ECG Bazaar).



Winning Mindset

Teachers will encourage students that setbacks are part of the learning process and to view challenges as opportunities to grow, fostering growth mindset.



Talent Development @ PGPS

DSA Secondary Schools,
Singapore Sports School,
School of the Arts, NUS High School of
Mathematics & Science & School of Science & Technology

Development Pathways for Cognitive, Physical, Aesthetics,
Leadership & Other Domains of Learning

Direct School Admission - Secondary (DSA - Sec)

Primary 4 – 5/6

Talent Development (TD) Programmes Supported by MOE

- TD programmes in Math & Science, e.g., Math E2K, Science E2K
- Externally run programmes that develop talents, e.g., MOE Junior Sports Academy (JSA), SOTA's Talent Academy, Singapore Sports School's Talent Academy

Talent Development (TD) Programmes by School

- TD programmes in Languages
- CCA & Leadership TD programmes
- Inter-school competitions/ Exhibitions/ Performances
- Competitions/ Exhibitions/ Performances at National & International levels

Relevant Training

Workshops that further develop TD skills, e.g., Mental Skills, Interview Skills, etc.,

Additional Support Programmes

TD Mentorship, Alumni Sharings, Day Camps, Learning Journeys, etc.



PUNGGOLGREEN
PRIMARY SCHOOL

Multi-Dimensional Approach to Talent Identification at Primary 1-3

Let's hear from our Ex-Student...

"I started preparing for Wushu DSA in P5 - balancing school, two training sessions, and intensive external coaching four times weekly.

Preparation involved mastering techniques, sparring, and fitness, with extra sessions during holidays. The P6 year taught me **time management and resilience**. I stayed motivated by my passion for Wushu and the goal of securing a spot in my chosen school.

The process taught me **discipline and perseverance**. Receiving my DSA result was a **proud moment**, an indication that my hard work had really paid off. DSA was not just about school - it was also about **growth and lifelong skills**."

Jethro Ng Sheng Rui,
6 Integrity (2024)
Entered Chung Cheng High School
(Yishun) via DSA(Wushu)



Let's hear from our Ex-Student...

"I began my leadership journey in Primary 3 when I became a prefect. From that point on, I gave my best in everything I did, always striving for excellence.

At P5, I was appointed as the vice-head prefect in the EXCO team where I was given many opportunities to learn and grow as a leader. These experiences taught me the importance of self-discipline, especially in managing my time effectively. The leadership training I received deepened my understanding of what it truly means to be a leader.

The DSA process taught me that hard work and responsibility are key to success. My journey had not been easy, but with the constant support and guidance from my teachers and parents, I am grateful to have received the confirmation offer from my dream school. It's a sign that all the hard work and efforts I put in had truly paid off!"

Sharlene Wong Qihui,
6 Innovation (2024)
Entered St. Nicholas Girls School
via DSA(Student Leadership)





FREQUENTLY ASKED QUESTIONS (FAQS)



Future-Ready Leaders with the Heart for Others



PUNGGOLGREEN
PRIMARY SCHOOL

Q1. Is it recommended for my child to participate in DSA-Sec?

Direct School Admission for secondary schools (DSA-Sec) seeks to broaden the recognition of talents and achievements beyond academic grades. Students can gain direct entry to certain secondary schools based on their talent in sports, Co-Curricular Activities and specific academic areas.

However, the DSA is not a pathway that suits every student.

To determine if DSA is an appropriate pathway for your child, you should carefully consider your child's strengths and interests, and the school's programmes and their ability to develop specific talent.



Q2. How many schools can my child apply to using the DSA-Sec Portal?

You can indicate up to 3 choices and 3 talent areas and may indicate up to 2 talent areas for the same school.

If you want to apply for 2 talent areas at the same school, you must indicate both as separate choices.

Do consider your choices carefully and manage your child's time and effort participating in multiple trials and interviews.

Note: For School of the Arts, you should apply directly to the school.



Q3. What are the DSA-Sec Admission Quota for Participating Schools?

The admission quotas for DSA-Sec vary depending on school types:

- Integrated Programme (IP) schools generally admit about 30%-35% of their Secondary 1 (S1) IP intake through the DSA-Sec.
- Non-IP schools can admit up to 20% of their S1 intake through DSA-Sec.
- Specialised independent schools such as NUS High School of Mathematics and Science, School of the Arts, School of Science and Technology can admit 100% of their S1 intake through DSA-Sec.



Q4. If my child is offered a DSA-Sec place in a Secondary School, does he/she need to meet the school's Cut-off Point for Secondary I Posting?

No, your child does not need to meet the school's Cut-off point under Secondary 1 Posting. To be successfully admitted to a school through DSA, your child's Primary School Leaving Examination (PSLE) results must qualify them for the Posting Group offered by the school.

Example 1: If the school only admits students through Posting Group 3, your child's PSLE score must qualify for Posting Group 3. This includes those in Posting Group 3 and Posting Group 2 option band.

Example 2: If the school admits students through Posting Groups 1, 2, and 3, your child's PSLE score must at least qualify for Posting Group 1. If your child is eligible for Posting Group 1, they will be admitted to the Posting Group 1 of the school.



Q5. My child is successful in the DSA-Sec and eligible for more than one Posting Group (PG) e.g., my child is offered a choice between PG 3 and 2. How can I select the preferred PG?

You can select your child's preferred Posting Group during the S1 Posting school choice submission period after the release of PSLE results. This is only if his/her DSA-Sec allocated school offers both Posting Groups.



Q6. When applying for DSA, which school results is considered by the secondary school, do we need to provide proof?

The DSA-Sec school(s) will be able to access your child's primary school information. This information includes your child's P5 and P6 academic results, and other information from P4 to P6, i.e., Co-curricular Activities (CCA), Leadership & Values in Action (VIA) involvements, School-Based achievements and awards such as MOE Edusave Awards, National School Games representation/achievements and Junior Sports Academy participation.



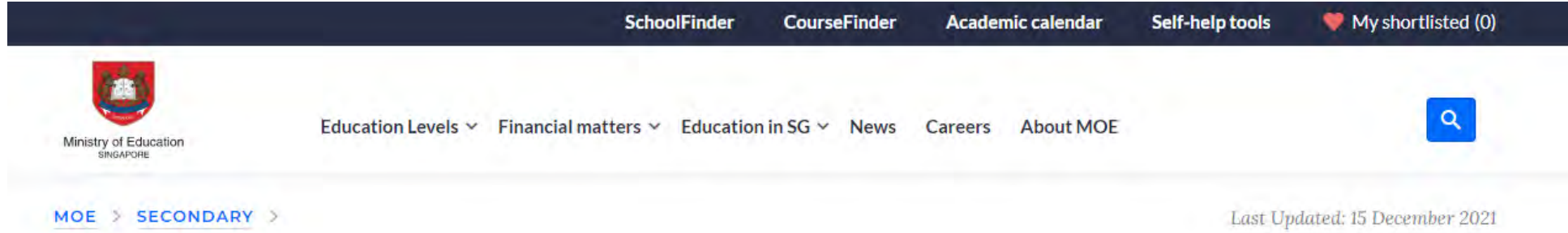
Q7. Can my child use certification obtained from outside to support DSA-Sec application?

Yes. Certifications and participation beyond school level and are relevant to the DSA talent area applied can be uploaded into the portal for the secondary school's consideration.



For More Information on DSA

<https://www.moe.gov.sg/secondary/dsa>



The screenshot shows the top navigation bar of the Ministry of Education Singapore website. The navigation bar includes links for SchoolFinder, CourseFinder, Academic calendar, Self-help tools, and My shortlisted (0). Below the navigation bar is the Ministry of Education Singapore logo and a search bar. The main content area shows the breadcrumb trail MOE > SECONDARY > and the date Last Updated: 15 December 2021.

Direct School Admission for secondary schools (DSA-Sec)

P6 students can seek admission to certain secondary schools based on their talent in sports, CCAs and specific academic areas. Learn if your child is eligible and how to apply.



PUNGGOLGREEN
PRIMARY SCHOOL

For Other Resources Relevant to DSA

SchoolFinder Tool

**SCHOOL
FINDER**



<https://go.gov.sg/secschoolfinder>

ECG Parent Guide



<https://go.gov.sg/parent-guide>



For Information on Secondary Schools' Open House

<https://www.schoolbag.edu.sg>



PUNGGOLGREEN
PRIMARY SCHOOL

Review of DSA Scheme

“An ongoing review will result in changes to the scheme, with the aim of ensuring that schools focus on students’ development, the selection process remains objective and transparent, and DSA continues to be accessible.”

Mr Chan Chun Sing
Minister of Education

<https://www.straitstimes.com/singapore/more-avenues-in-the-education-system-for-students-to-find-their-best-fit-chan-chun-sing>



THANK YOU!
HAVE A LOVELY
EVENING AHEAD!



Future-Ready Leaders with the Heart for Others



PUNGGOLGREEN
PRIMARY SCHOOL