

Welcome to Primary 5 Parents' Briefing

4 March 2022



PUNGGOLGREEN
PRIMARY SCHOOL

Future-Ready Leaders With The Heart For Others

Welcome to Primary 5 Parents' Briefing

- Ensure that your microphone is switched off at all times.
- Do not upload or record any part of the briefing. Slides will be shared on the school website.
- If you have questions, please indicate them in the feedback form at the end of the session.



PUNGGOLGREEN
PRIMARY SCHOOL

Future-Ready Leaders With The Heart For Others

Outline of today's sharing

1

Direct School Admission (DSA)

2

Updates on PSLE Scoring and
S1 Posting Exercise



PUNGGOLGREEN
PRIMARY SCHOOL

Future-Ready Leaders With The Heart For Others

Evolution of Singapore's Education System

Industrialisation



Skills/Capital Intensive



Knowledge Based



Innovation Driven
(2012 Onwards)



Survival Driven
(1959 – 1978)



Efficiency Driven
(1979 – 1996)



Ability Based,
Aspiration Driven
(1997 – 2011)

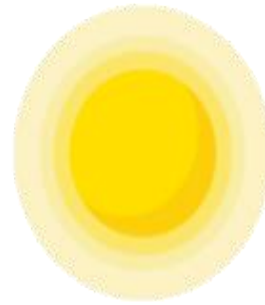


Student-centric,
Values Driven
(2012 Onwards)



Learn For Life

- New phase of our education system
 - Develop diverse strengths and interests of our students,
 - Nurture an intrinsic motivation to learn
 - Ensure every child has a good start in life, and can access opportunities at every stage of their lives.



Support our educators:
**SkillsFuture
for Educators**

Structural change:
**Ignite Joy
of Learning**

Basic purpose:
**Ensure Education
is an Uplifting Force**



Stay future-ready:
**Refresh Our
Curriculum**

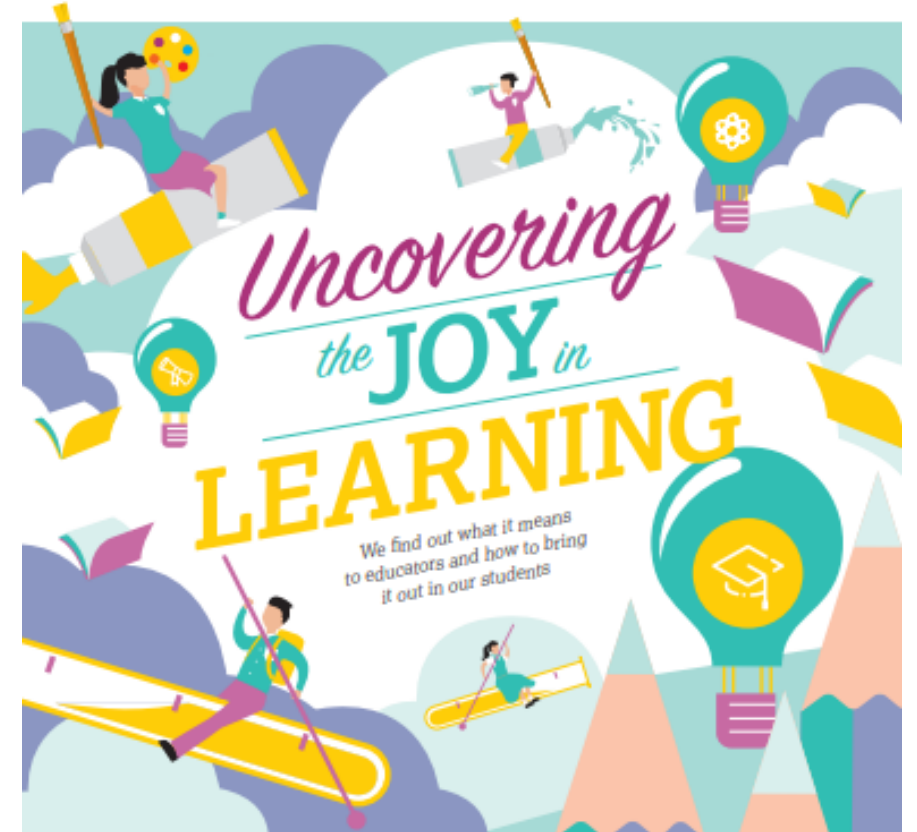
Structural change:
**One Sec Education,
Many Subject Bands**

Hold on to our roots:
**Learn Languages
for Life**



Nurturing the Joy of Learning

- **Reduction of School-Based Assessment Load**
 - Holistic assessments in primary schools
 - Removal of mid-year exams for P3, P5, and S3
- **Changes to PSLE Scoring**
 - Reduce overly-fine differentiation between students & unnecessary competition
- **Broadened Definition of Merit in Admissions**
 - Expansion of Direct School Admission (DSA) and refinement to DSA policy
 - Aptitude-based admissions in IHLs



Primary School → Secondary School

S1 Posting Exercise

Choice

Choice

Direct School
Admission (DSA)



PUNGGOLGREEN
PRIMARY SCHOOL

Entering a Secondary School



PSLE/S1 Posting Exercise

- Based on a student's **PSLE score (Total AL score)**
- **Most students enter secondary schools this way**



DSA

- Based on a diverse range of **talents and achievements in specific academic subjects or non-academic areas, beyond what the PSLE recognizes**
- Allows students to **access school programmes to develop their talents**



Direct School Admission (DSA)



PUNGGOLGREEN
PRIMARY SCHOOL

What is DSA?

Direct School Admission for secondary schools (DSA-Sec) allows students to gain direct entry to certain secondary schools based on their talent in sports, CCAs and specific academic areas, before taking the PSLE.



DSA is only in Primary 6.
So, why have the briefing now?



PUNGGOLGREEN
PRIMARY SCHOOL

Is the DSA right for your child?



If your child has specific **talents** which a school offers the DSA in, and is **passionate** about and **committed** to developing his/her strengths and interests...

DSA can support his/her development in that talent area.



What are schools looking for?

→ The selection process differs across schools, and across different DSA-Sec categories.

→ In general, schools are looking for candidates with:

Talent, Passion and Commitment

- Schools may look at **achievements** and **participation** (e.g. in Junior Sports Academy).
- Schools may also conduct tests, trials or selection camps to identify students with **strengths, or strong fundamentals and potential** in particular areas.

Strong personal qualities

- Schools may look at CCA records and VIA participation.
- Schools may also conduct interviews.

Good academic fit

- Schools may look at primary school results to ensure students can benefit from the school's pace of learning.

Eligibility

Primary 6 students can apply for DSA-Sec based on a wide-range of talents, including:

- Sports and games
- Visual, literary and performing arts
- Debate and public speaking
- Science, mathematics and engineering
- Languages and humanities
- Uniformed groups
- Leadership (for example, prefects)



Possible DSA outcomes

→ **Confirmed Offer** – Your child have a place reserved in the school.

→ **Waitlist** – This means your child will only be considered if other students with Confirmed Offer choose not to go to that school during the School Preference stage. Allocation will be based on students' rank on the school's Wait List.

→ **Unsuccessful** – If your child is unsuccessful in all their applications, but still wish to enter the schools your child applied for in the DSA, your child can consider them again during the S1 Posting Exercise based on his/her PSLE results.

Preparation Starts Now

Schools have different selection processes but, in general, applicants must be able to demonstrate their talent, potential, passion and character through their school track record and online DSA applications. For example, your child might have:

- Represented the school in a CCA.
- Held a role in a play or performance.
- Done well in a subject such as mathematics or creative writing.
- Held a leadership role in class or a CCA.

Things to note

If your child is admitted through DSA-Sec, they must commit to their chosen school for the duration of the programme. They are not allowed to transfer to another secondary school.

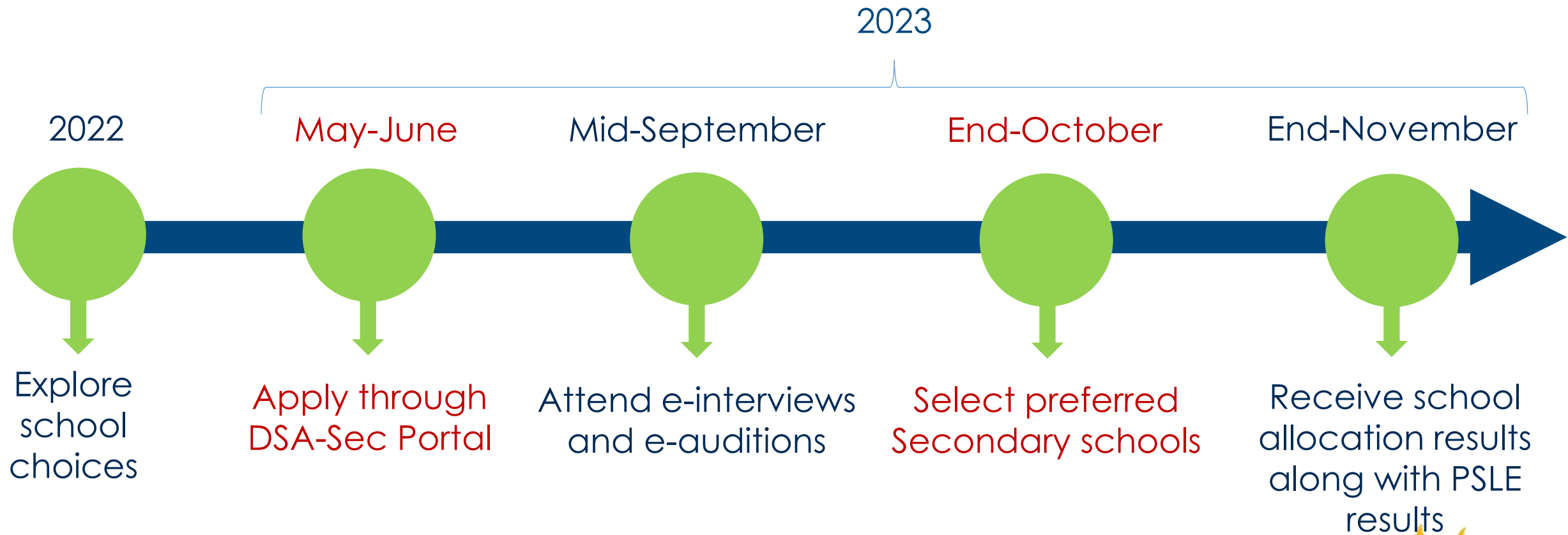
Preparation Starts Now

So, it is important to start early;

1. Discuss with your child on offered programmes and activities your child is talented in
2. Shortlist possible schools that matches your child's talent
3. Join a school-based CCA and stay with it till Primary 6, **or**
4. Join an external committee/ performance group and keep the school posted
5. Start a portfolio and keep a documentation of all your child's achievements

Note: No testimonial from primary school required


DSA Timeline (TBC)



For more information on DSA


<https://www.moe.gov.sg/secondary/dsa>

[SchoolFinder](#) [CourseFinder](#) [Academic calendar](#) [Self-help tools](#) [My shortlisted \(0\)](#)



Ministry of Education
SINGAPORE

Education Levels ▾ Financial matters ▾ Education in SG ▾ News Careers About MOE



[MOE](#) > [SECONDARY](#) > Last Updated: 15 December 2021

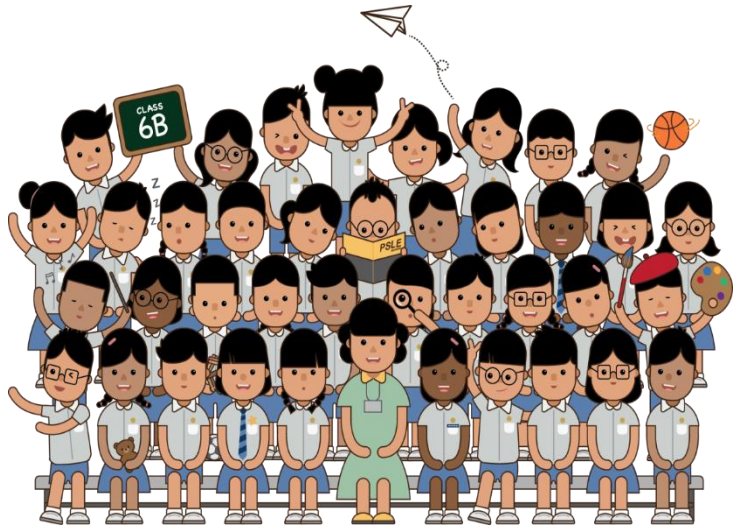
Direct School Admission for secondary schools (DSA-Sec)

P6 students can seek admission to certain secondary schools based on their talent in sports, CCAs and specific academic areas. Learn if your child is eligible and how to apply.



PUNGGOLGREEN
PRIMARY SCHOOL

Updates on PSLE Scoring and S1 Posting Exercise



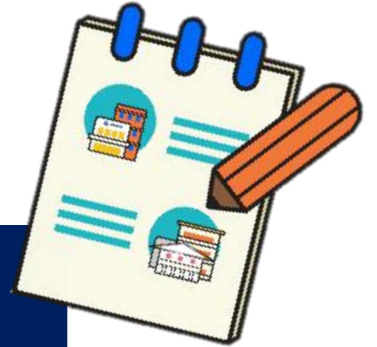
PUNGGOLGREEN
PRIMARY SCHOOL

WHAT IS THE INTENT OF THE PSLE?



A useful checkpoint at the end of primary school

A fair way to determine secondary school posting



Over the years, we have been changing the education system to help our students discover and develop their strengths and interests, while moving away from an over-emphasis on academic results. Our PSLE Scoring changes reduce an over-emphasis on academic results by:

1

Reducing fine differentiation of students' examination results at a young age.

2

Recognising a student's level of achievement, regardless of how his/her peers have done.

3

Encouraging families to choose secondary schools holistically based on students' strengths, interests and abilities.

HOW THE PSLE SCORING SYSTEM WORKS



PUNGGOLGREEN
PRIMARY SCHOOL

FROM T-SCORE TO SCORING BANDS

a) Reduces fine differentiation of students' examination results at a young age

- Students with similar scores in each subject are grouped into wider scoring bands measured in 8 ALs.

b) Reflects a student's individual level of achievement

- Students' ALs for each subject reflect their level of achievement, rather than how they have performed relative to their peers.

AL	RAW MARK RANGE
1	≥ 90
2	85 – 89
3	80 – 84
4	75 – 79
5	65 – 74
6	45 – 64
7	20 – 44
8	< 20

GRADING OF FOUNDATION SUBJECT GRADES

- Foundation subject grades are graded in scoring bands from **AL A to C**.
- To derive a student's overall PSLE Score for S1 Posting, AL A to AL C for Foundation level subjects are **mapped to AL 6 to AL 8 of Standard level subjects respectively**.
- Similar to the PSLE T-score system, this mapping is based on the learning and assessment load of the subjects, and informs students of how ready they are for the curriculum in secondary school.

FOUNDATION LEVEL AL	FOUNDATION RAW MARK RANGE	EQUIVALENT STANDARD LEVEL AL
A	75 – 100	6
B	30 – 74	7
C	< 30	8

4 SUBJECT ALs WILL BE ADDED TO FORM THE OVERALL PSLE SCORE

- The PSLE Score can range from 4 to 32, with 4 being the best.
- Students are placed in secondary school based on their school choice order and school's cut-off AL score.

ENGLISH LANGUAGE AL 3

MOTHER TONGUE
LANGUAGE AL 2

MATHEMATICS AL 1

SCIENCE AL 2

PSLE SCORE: 8

CRITERIA FOR PROMOTION TO SECONDARY SCHOOL

Subjects taken at standard level

Total AL Score
30 or lower

and

AL 7 or better in both
English and Math



Progress to Mainstream
Secondary School

Subjects taken at Foundation level

Total AL Score
30 or lower

and

AL B or better in both
English and Math



Progress to Mainstream
Secondary School

Similar to the T-score system, students who are not eligible to progress to mainstream secondary school, would be offered the option to repeat the PSLE, or progress to NorthLight School or Assumption Pathway School with their principal's endorsement.

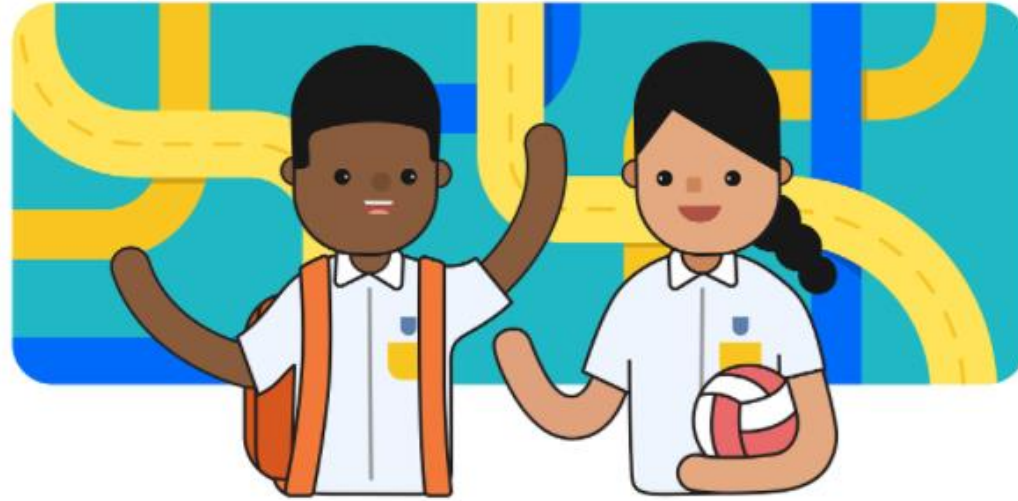
Subject Based Banding (SBB) (Primary)

Offering Different Subject
Combinations



PUNGGOLGREEN
PRIMARY SCHOOL

SUBJECT BASED BANDING (PRIMARY)



Subject-based banding (SBB) at P5 and P6 gives your child the opportunity to take a combination of subjects at standard and foundation levels based on their strengths. This would allow your child to:

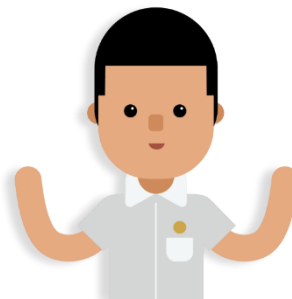
- Stretch their potential in subjects they are strong in.
- Build up their understanding in subjects they need more help with.

Subject-Based Banding (Primary)

- Offers students the option of Standard and Foundation Subjects, depending on their strengths.
- Allow students to focus on and stretch their potential in the subjects they are strong in while building up the fundamentals in the subject they need more support in.
- The new PSLE scoring system **will not change** the considerations for deciding on a student's subject combination.

Subject-Based Banding (Primary)

- Schools will continue to recommend based on the following:
 - Student's aptitude, motivation and performance in each subject;
 - Student's ability to cope with a particular subject combination; and
 - Whether the subject combination focuses sufficiently on literacy and numeracy, and facilitates the student's articulation to secondary school and beyond.
- Offering subjects at Foundation level is **not a disadvantage to the students**. It enables them to focus on building up strong fundamentals in these subjects and better prepares them for progression to secondary school.



Full Subject Based Banding (SBB) (Secondary)

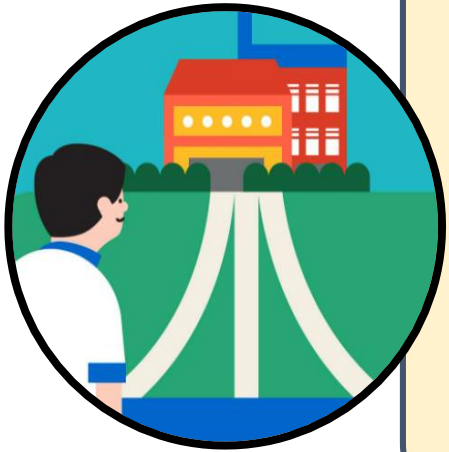
One Secondary Education
Many Subject Bands



PUNGGOLGREEN
PRIMARY SCHOOL

FULL SUBJECT-BASED BANDING (FULL SBB)

- MOE is expanding Subject-Based Banding to Full SBB in secondary schools.
- This is in line with the changes to PSLE Scoring to recognise each student's own level of achievement and encourage them to choose secondary schools that fit their strengths and interests.
- Full SBB aims to further nurture the joy of learning and develop multiple pathways to cater to the different student profiles. Through Full SBB, we want students to:



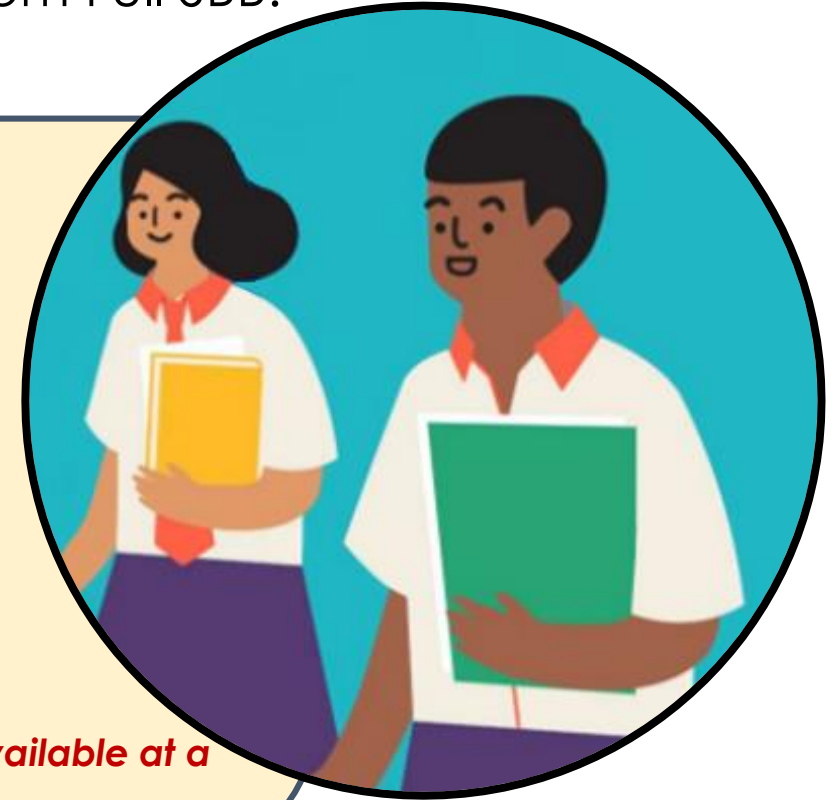
- have greater ownership of their education, and learn each subject at the level that best caters to their overall strengths, interests and learning needs, and
- have more opportunities to interact with friends of different strengths and interests.
- not be held back by negative self-concepts and labelling.
- have increased access to post-sec pathways, while having strong fundamentals in their subjects so that they are able to thrive in the pathway they choose.

FULL SUBJECT-BASED BANDING (FULL SBB)

- The following are changes that students will experience from Full SBB:

- Removal of Express, N(A) and N(T) courses
- Mixed form classes
- Common Curriculum subjects
- Offering subjects at a more demanding level, including Humanities subjects
- Common National Examinations
- Post-secondary Admissions

(More information will be made available at a later date.)



FULL SUBJECT-BASED BANDING (FULL SBB) TIMELINE

Link to PSLE-FSBB Microsite



<https://go.gov.sg/pslefsbb>



2020

Full SBB pilot commenced in 28 secondary schools. Feedback from pilot schools has been positive.



2022

Full SBB will continue to be rolled out to more schools in phases.



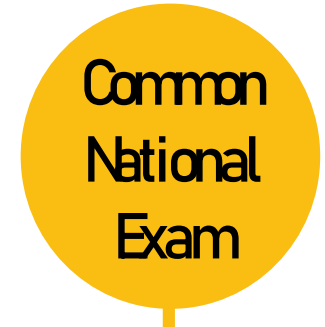
2023



2024

From 2024,

- There will no longer be Express, N(A) and N(T) courses.
- Students will be able to study subjects at different levels that suit their interests, strengths and learning needs.



2027

From 2027, students will sit for the common national examination and receive a new national certification with subjects at different levels.

SUBJECT-BASED BANDING (SECONDARY)

[SBB (SEC)] ELIGIBILITY CRITERIA

G2
English

G2
Mother Tongue

G1
Math

G2
Science

EXAMPLE:

ENGLISH LANGUAGE AL6

MOTHER TONGUE
LANGUAGE AL6

MATHEMATICS AL5

SCIENCE AL6

PSLE SCORE: 23



ELIGIBILITY CRITERIA FOR HIGHER MOTHER TONGUE LANGUAGE (HMTL)

ELIGIBILITY CRITERIA FOR HMTL

(i) An overall PSLE Score of 8 or better

or

(ii) An overall PSLE Score of 9 to 14 (inclusive); and attain

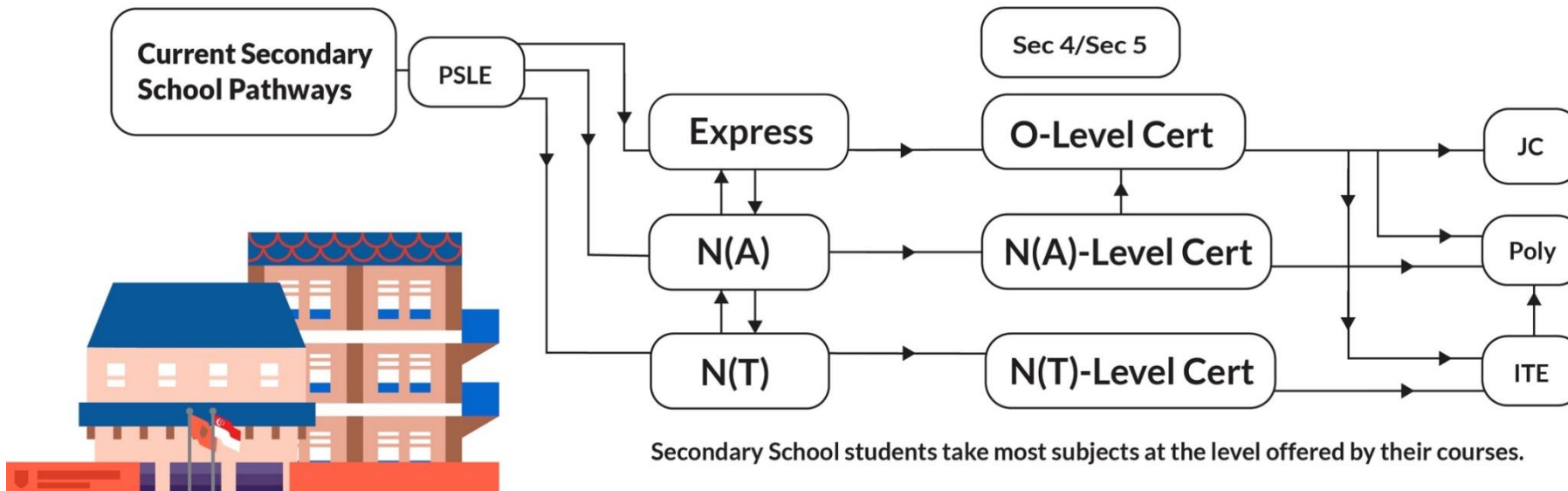
- **AL 1 / AL 2 in MTL or**
- **Distinction / Merit in HMTL**

- The eligibility criteria for taking HMTL takes reference from past criteria.
- It ensures students can cope with the higher academic load.
- Secondary schools continue to have the flexibility to offer HMTL to students who do not meet the criteria if they:
 - have high ability and interest in MTL, and
 - are able to cope with the learning load required.

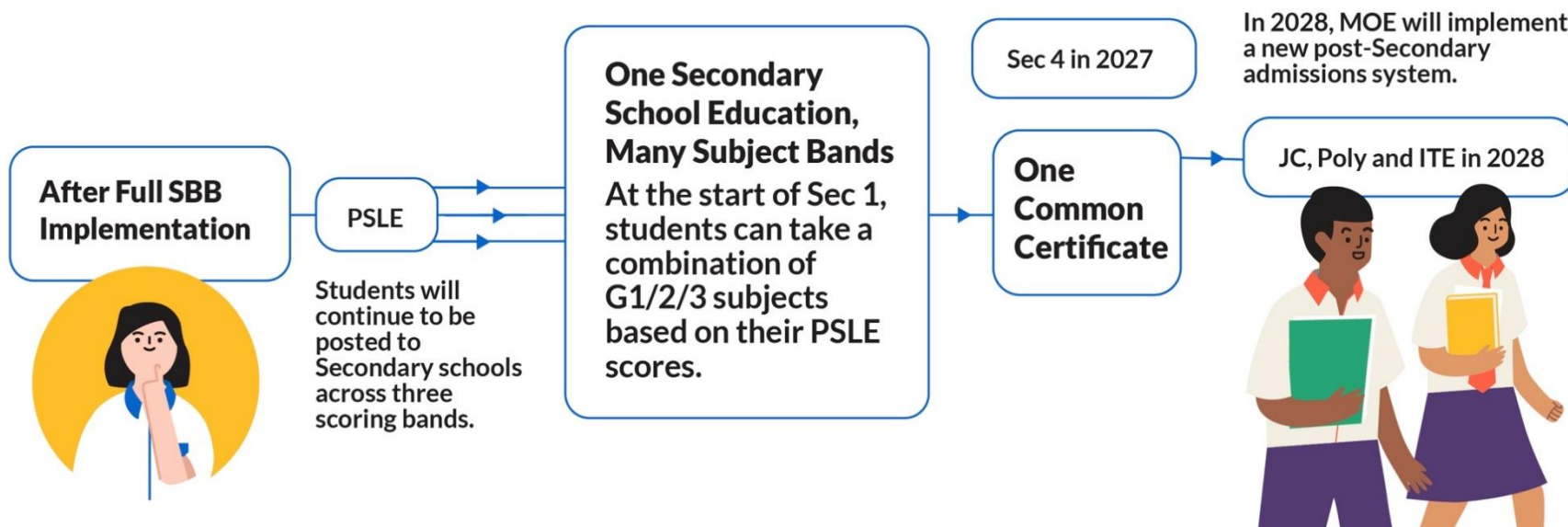


One Sec Education, Many Subject Bands

Current System



From 2024



FIND OUT MORE ON THE PSLE-FSBB MICROSITE!



<https://go.gov.sg/pslefsbb>



OTHER RESOURCES

SchoolFinder Tool

**SCHOOL
FINDER**



<https://go.gov.sg/secschoolfinder>

ECG Parent Guide



<https://go.gov.sg/parent-guide>

QUESTIONS/QUERIES CAPTURED THROUGH PG

No.	Question	Remarks
1.	Can a student without CCA enroll via DSA?	<p>Yes.</p> <p>As long as the child has significant interest and is skillful in the talent area that he or she has identified.</p>
2.	Is it recommended for my child to participate in DSA-Sec?	<p>DSA-Sec is a pathway through which students gain direct entry to certain secondary schools based on their talent in sports, CCAs and specific academic areas.</p> <p>However, the DSA is not a pathway that suits every student.</p> <p>To determine if DSA is an appropriate pathway for your child, you should carefully consider your child's strengths and interests, and the school's programmes and their ability to develop specific talent.</p>



QUESTIONS/QUERIES CAPTURED THROUGH PG

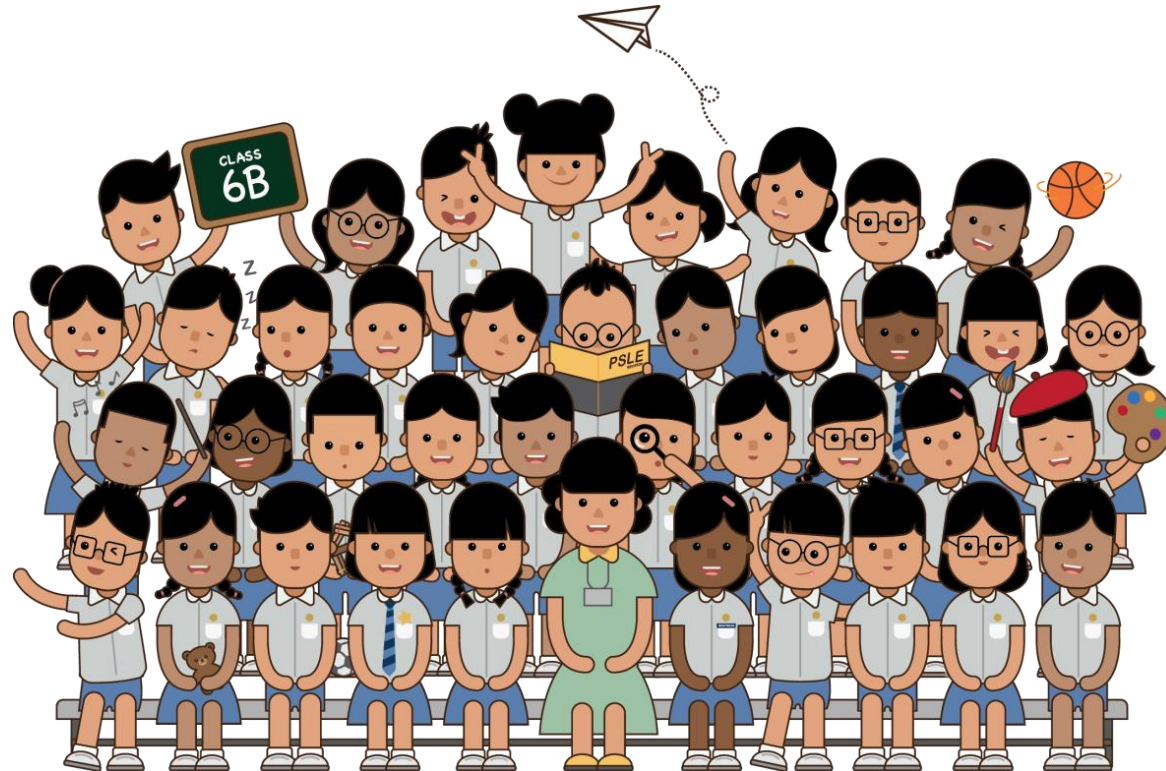
No.	Question	Remarks
3.	How many schools can my child apply to through the DSA-Sec Portal?	<p>You can indicate up to 3 choices and 3 talent areas and may indicate up to 2 talent areas for the same school.</p> <p>If you want to apply for 2 talent areas at the same school, you must indicate both as separate choices.</p>
4.	How many offers will I receive from a DSA-Sec school if I have applied to two talent areas from the same school?	<p>The school will make only 1 offer in a specific talent area. The offer will be based on the school's assessment of your child's talent and the talent area that they can better develop your child in.</p>
5.	If applicants are not successful in any of their applications under the direct admission, can they still opt for a school during the School Preference Submission period?	<p>They will not be able to opt for any school during the School Preference Submission period.</p> <p>They will be able to submit their school choices during the Secondary 1 Posting that takes place after the release of Primary School Leaving Examination (PSLE) results.</p>

QUESTIONS/QUERIES CAPTURED THROUGH PG

No.	Question	Remarks
6.	Can I withdraw from DSA-Sec after I have submitted school preferences?	<p>You can log in to the DSA-Sec Portal to withdraw your application during the School Preference Submission period.</p> <p>Both you and your spouse are required to log in to complete the withdrawal process. If the withdrawal is not confirmed by both parents, your child's school preferences will be processed based on the last completed submission.</p> <p>Note: You cannot withdraw after the School Preference Submission period.</p>



Thank you for your time!



PUNGGOLGREEN
PRIMARY SCHOOL

Future-Ready Leaders With The Heart For Others

Please scan the QR code to access the feedback form or to post any questions about today's session.



<https://go.gov.sg/2022parents-briefing>



PUNGGOLGREEN
PRIMARY SCHOOL

Future-Ready Leaders With The Heart For Others