

Future-ready Leaders with the Heart for Others

PARENT-TEACHER MEETING 1

3 February 2025



AGENDA

1

Form and Co-Form Teachers

2

Expectations and Routines

3

School's Focus and Key Outcomes

4

Programmes and Highlights of the Year

5

Partnering with You

Expectations and Routines



School Curriculum Hours

Day	Monday	Tuesday	Wednesday	Thursday	Friday
Arrival	7.25 a.m.				
Dismissal	1.30 p.m. (for Primary 1 and 2) 1.40 p.m. (for Primary 3 to 6)				12.40 p.m.
After School Programme	CCA Session 1 (2.15 - 4.15 p.m.) Session 2 (3.45 - 5.45 p.m.)	Supplementary/ Remedial Slot 1 (2.15 - 3 p.m.) Slot 2 (3 - 3.45 p.m.)	N/A	Supplementary/ Remedial Slot 1 (2.15 - 3 p.m.) Slot 2 (3 - 3.45 p.m.) CCA (3.45 - 5.45 p.m.)	HMTL

School Expectations and Routines



Regular Attendance

- All absence from school must be accompanied by a medical certificate or parent letter.
- Students are encouraged **not** to plan overseas trips for family vacations during school terms.


Punctuality

- Students will be considered as late if they report to school after 7.30 a.m.
- Students should report to school on time to participate in pre-assembly activities planned for them.

Pre-Assembly Activities (7.20a.m. onwards)


- [Mon & Fri] Students will report to the School Hall.
- [Tues – Thurs] Students will report to the classrooms.
- Students should bring a story book (Mon to Wed – EL book, Thurs to Fri – MT book) for silent reading every day.

A Few Reminders...




Prescribed uniform must worn to school at all times. This includes;


- School socks
- Black canvas shoes (all black)



Name tags on the school shirt should be positioned slightly above the school crest.



Carrying handphones and smart watches, as well as cycling to school, should be accompanied by the submission of a signed consent from parents.



No jewellery of any form and/or fancy watch are to be worn by students.

- For more details, please refer to the Student Handbook (Pg 7 to 14).

Smartphone and/or Smartwatch Policy

To minimise distractions during school hours, students are **strongly discouraged** from bringing smartphones and/or smartwatches to school.



Students are **not allowed to use** smartphones or smartwatches during school hours, including recess, CCA sessions, and after-school programmes (e.g. remedial or enrichment lessons).

All devices must remain in your child's school bag until the end of school hours or after-school programmes. Student can take out the device to contact parents after passing the school guards' areas.



In case of misuse, the mobile phone may be confiscated and will only be returned in your presence. Please also note that the school is not responsible for any loss of smartphones and/or smartwatches. Should you need to contact your child for urgent matters, you may call the school's General Office at [+65 6538 3011](tel:+6565383011).



Homework Policy @ PGPS

Scan to read in detail



PUNGGOLGREEN
PRIMARY SCHOOL

A. Why homework?

- Meaningful and relevant homework assignment forms an integral part of students' learning process as **homework allows students to deepen their understanding and facilitates better retention of learning** through:
 - ✓ Practising skills acquired
 - ✓ Reinforcing concepts taught
 - ✓ Applying knowledge learnt
- Homework provides students with the opportunity to **learn beyond the classroom and nurtures greater self-discipline, time management and self-directedness in learning.**
- Allows teachers to **effectively identify students' learning gaps** so that appropriate intervention and support can be provided to enhance students' learning.
- Through homework submissions, **teachers can formatively assess students' learning progress and share timely feedback** with parents to support their child's learning.

B. How is homework managed at PGPS?

In consideration for the students' well-being, we refrain from giving homework for the following groups of students on these occasions:

a) **PI Students in Term One**

- To allow PI students to have a smoother transition into their primary school life

b) **P3-6 Students on Mondays (CCA Day)**

- To allow students ample rest time after attending CCA sessions.

c) **P3-5 Students on scheduled Weighted Assessment (WA) Days**

- To give students time and space to do self-revision.

d) **All Students During Festive or Celebratory Holidays (e.g. CNY, Deepavali, Hari Raya, National Day & Children's Day)**

- To ensure that students can spend quality time and enjoy the celebrations with their families and loved ones.

NOTE: *If homework is given on days indicated in b) to d), more time would be given for students to complete their assigned task/s.*

C. What do we hope to develop in our students?

Students should be **self-directed and take ownership of their own learning** by:

- **Exercising personal responsibility** in recording their daily assignments (including deadlines) in their Student Handbook.
- **Seeking clarification** if they are unclear with any assignment task or instructions.
- **Taking pride** in completing their assignments, ensuring that they put in their best effort to produce quality work for submission.
- **Exercising self-discipline** in submitting all assignments (including corrections) on time.



D. How can we make homework meaningful?

With positive **school-home partnership**, parents can work closely with the school to play an active role in **supporting your child's learning** through:

- **Encouraging your child to check their Student Handbook** and supervising them in their homework completion.
- **Providing a conducive environment at home** (e.g. a quiet study area that is well-lit and free from distractions) to revise and complete their assigned homework.
- **Establishing daily routines with your child** to work on their assigned homework for the day, while ensuring that there is ample rest and play time set aside for their well-being.
- **Guiding your child** when they face difficulties in completing their assignments and encouraging them to make an attempt even if they find them challenging, and seeking help from their teachers.

School's Focus and Key Outcomes



Student Outcomes

SELF-DIRECTED LEARNERS

- Have a lively curiosity about things
- Take responsibility for their own learning
- Take pride in their work
- Have healthy habits and an awareness of the arts

CONFIDENT LEADERS

- Know their strengths and areas for growth
- Think for themselves
- Express themselves confidently
- Know right from wrong and choose to do what is right

INNOVATIVE COLLABORATORS

- Are creative and inventive
- Exercise initiative
- Work effectively in teams
- Strive for excellence to achieve a common goal despite challenges

CARING CITIZENS

- Know and love Singapore
- Empathize and share with others
- Care for others and the environment
- Take action to improve the lives of others



S.T.R.I.V.E Values



Self-Discipline

Integrity

Teamwork

Valour

Responsibility

Empathy



S.T.R.I.V.E Values

Values	Tagline	Desired Behaviour (I will...)
Self-Discipline	Choose to do what is right	<ul style="list-style-type: none"> ▪ Set personal goals and work hard towards achieving them ▪ Think before I act and manage my own behavior ▪ Abide by the school rules ▪ Adopt healthy habits
Teamwork	Work collaboratively with others to achieve a common goal	<ul style="list-style-type: none"> ▪ Participate and contribute actively to the team ▪ Encourage and motivate others ▪ Listen and respect the opinions of others ▪ Work and play with peers regardless of background (race/religion/language etc)
Responsibility	Take ownership of my own learning and my actions	<ul style="list-style-type: none"> ▪ Remain curious and be self-motivated to learn ▪ Carry out work/duties given with diligence and complete them on time ▪ Take pride in producing good work ▪ Own up when I make mistakes and be willing to accept the consequences
Integrity	Be honest even when no one is watching	<ul style="list-style-type: none"> ▪ Be honest in words and deeds ▪ Lead by example ▪ Uphold the good name of the school ▪ Keep to my words and promises
Valour	Show courage even in the face of challenges	<ul style="list-style-type: none"> ▪ Show confidence in my own ability ▪ Embrace challenges ▪ Stand up for what is right ▪ Dare to try new learning experiences
Empathy	Seek to understand and show care for others	<ul style="list-style-type: none"> ▪ Be mindful of others' feelings ▪ Help others in need ▪ Show respect to teachers and be courteous to others ▪ Look after the class, school and the environment

Learning Dispositions

Learning Disposition	Description	Behavioural Descriptors
Curiosity and Self-Directedness	I am interested to learn and motivated to find out more.	<ul style="list-style-type: none">• Stays focused during lesson• Participates in class discussions
Responsibility and Diligence	I take ownership of my learning. I am driven to give my best.	<ul style="list-style-type: none">• Submits assigned homework on time• Puts in effort to submit quality work
Perseverance and Resilience	I am determined to keep going despite challenges. I am willing to pick myself up after setbacks.	<ul style="list-style-type: none">• Embraces challenging tasks• Shows willingness to try again despite setbacks
Collaboration and Open-mindedness	I am willing to work with others to achieve a shared goal. I consider the opinions of others.	<ul style="list-style-type: none">• Contributes to group work

Programmes and Highlights of the Year



P3 Programmes to Develop Self-Directed Learners



**Book Buffs@PGPS
EL Reading Programme**



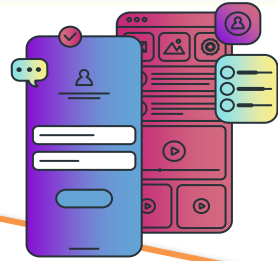
Math Around Us



**Joy of Learning
Projects**



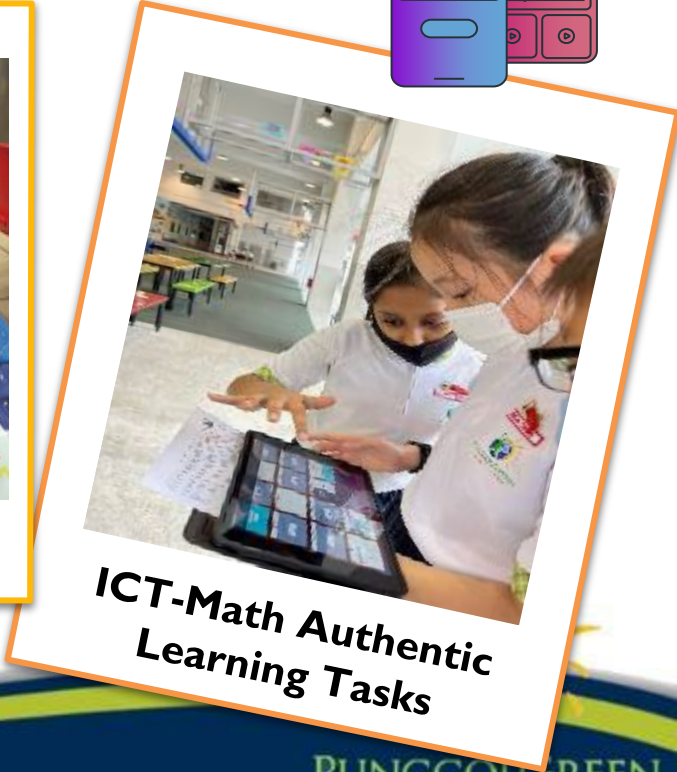
P3 Programmes to Develop Self-Directed Learners



**Interdisciplinary
Project Work**



iFTGP



**ICT-Math Authentic
Learning Tasks**

P3 Programmes to Develop Self-Directed Learners



**Conversational
Chinese and Malay
Programme**



**3 Habits of Mother
Tongue Language
Learners**



Arts Fiesta



P3 Programmes to Develop Self-Directed Learners



**Learning Journey
to Geylang Serai
Heritage Gallery**



P3 Programmes to Develop **Confident Leaders**



Leadership Opportunities:

- | | | |
|-----------------|--------------------|---------------------|
| Class Committee | CCA Leaders | |
| Student Leaders | PAM Ambassadors | MTL Support Leaders |
| Green leaders | EL Library Leaders | |

P3 Programmes to Develop **Confident Leaders**



Music Busking



PGPS' Got Talent!



P3 Programmes to Develop Innovative Collaborators



**Conversational
Chinese and Malay
Programme**



**STRIVE 2 Thrive
Week**



SC Eco Week



P3 Programmes to Develop **Caring Citizens**



**Red Packet
Recycling
Initiative**



SC Eco Week



P3 Planting



**MTL
Experiential
Learning**

Values in Action (VIA):

- **School Wide VIA – SHINE@PGPS**
- **i-Care in conjunction with VIA**



P3 Programmes to Develop **Caring Citizens**



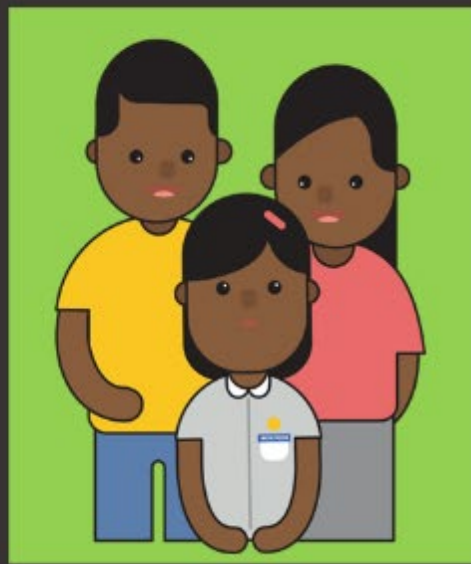
National Education

- Total Defence Day
- International Friendship Day
- Racial Harmony Day
- National Day



Partnering With You

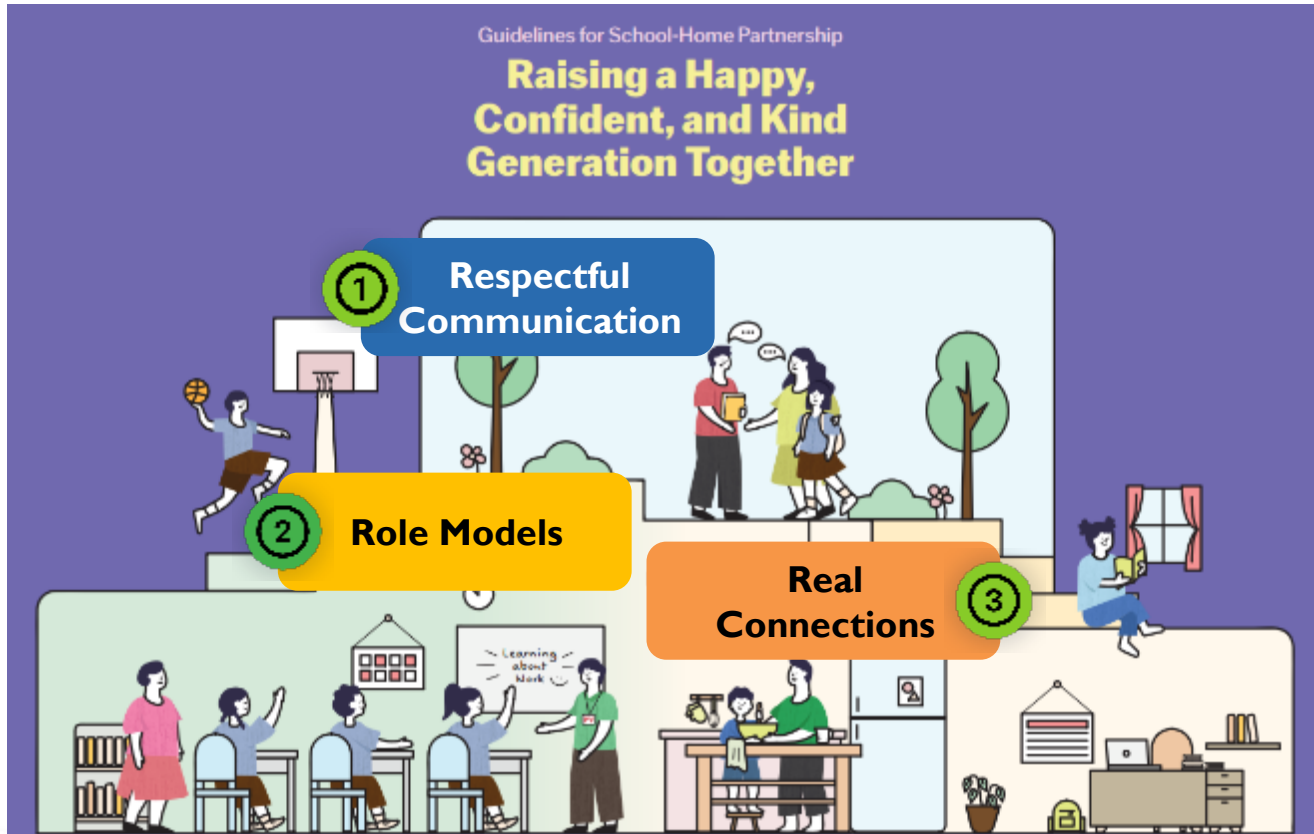




Raising a Happy, Confident and Kind Generation Together
Our children do best when schools and parents work hand in hand to support them.



3 Ways to Build School-Home Partnership



Respectful Communication



Understand each other's perspectives and concerns regarding each child.



Communicate kindly using official channels (*refer to list on the next slide*).



Communicate during working hours.
We may not be able to respond immediately, but we will respond as soon as we can.



Communication Channels

Parent to School & School to Parent

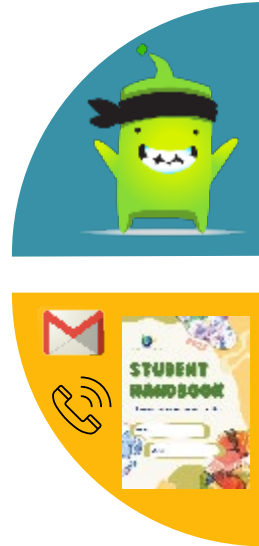
CLASSDOJO

One of the platforms for communication between subject teachers and parents.

For:

- Daily reminders
- Clarification of matters
- Sharing of updates of child

STUDENT ORGANISER / EMAIL / PHONE CALL*



***NOTE:** Teachers will use the school phone to share updates instead of personal mobile phones.

School to Parent

PUNGGOL GREEN PRIMARY SCHOOL'S WEBSITE

Website:

punggolgreenpri.moe.edu.sg/

Phone Number: 65383011

For:

- Termly newsletters
- Consent forms
- Latest updates on school matters
- Travel declaration

PARENTS GATEWAY



Being Role Models



Find joy in everyday experiences with our children.



Instill confidence by encouraging responsibility and believing in our children's abilities.



Model good values in words and actions.



Building Real Connections



Establish good habits for our children to stay confident and in control of their technology use.



Build strong bonds through shared experiences and meaningful conversations.



Provide a balanced mix of engaging online and offline activities at home.



Parents, You Are Our Key Partners

- Together, we can create a positive and supportive environment for our children to thrive both in and out of school.
- Let us lead by example and communicate with kindness, and build strong school-home partnerships for our children.

It takes a village to raise a child.



General Tips for Parents

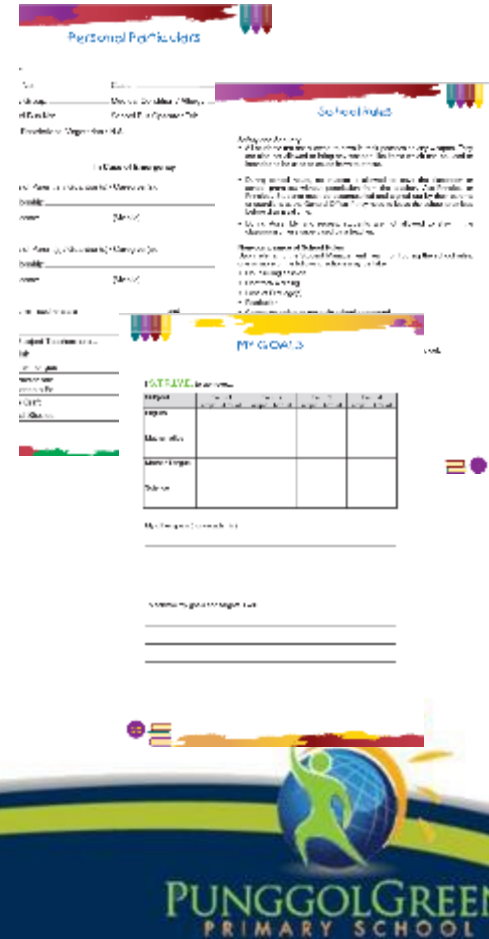
- Encourage your child to express themselves freely and be curious.
- Affirm your child's strengths, interests and efforts.
- Check your child's activity books and files regularly.
- Make sure assignments are carefully completed and concepts are understood.
- Encourage your child to pack their bag on their own.



We Seek Your Support...

Student Handbook

- Ensure that your **Personal Particulars (Pg 1)** are filled in correctly.
- Read through the **updated School Rules** and **acknowledge** by signing Pg 14.
- **Set personal goals together** with your child on Pg 20 (*This will be a work in progress, and it would be beneficial to revisit this with your child from time to time*).



Share Your Feedback and Suggestions

- Kindly scan the QR Code and complete the **Parents' Feedback Survey**.
- This will help us plan future sessions better.



<https://go.gov.sg/2025-ptm1-feedback>



PUNGGOLGREEN
PRIMARY SCHOOL



***Thank you for attending today's session.
Please share with us any questions you
may have.***