

Ref: PGPS/17/10/05

13 October 2017

Dear Parents/Guardians,

PSLE Marking Days/Primary 1 E-Learning Days

Please be informed that 19, 20, 23 and 24 October 2017 are PSLE Marking Days and our teachers will be deployed for this marking exercise. Students are not required to be in school on these 4 days. To support your child's learning, our teachers have assigned e-lessons on our school's Learning Management System (LMS).

Your child/ward will be able to login to the system on 19 October, from 8.00 a.m. onwards to access the English, Mathematics and Mother Tongue lessons. Our teachers will conduct a familiarisation exercise to guide students on how to access the online lessons and assignments.

Subject	Title of Lesson/Assignment
English	ASKnLearn LMS <ul style="list-style-type: none"> ● Short, Tall, Big or Small ● My River
Mathematics	ASKnLearn LMS (Day 1 – 3) <ul style="list-style-type: none"> ● Money ● Time Koobits Platform (Day 4) <ul style="list-style-type: none"> ● Money ● Time
Mother Tongue	Malay Language ASKnLearn LMS <ul style="list-style-type: none"> ● Learning Tasks (<i>Unit 8: Jiran Saya</i>) <ul style="list-style-type: none"> ○ <i>Kata Tanya</i> ○ <i>Kata Nafi</i> ○ <i>Frasa</i> ○ <i>Menyusun Perkataan/Frasa</i> Chinese Language ASKnLearn LMS <ul style="list-style-type: none"> ● 小一华文 “认字摩天轮” Learning Tasks Tamil Language Pazhahutamil website <ul style="list-style-type: none"> ● Grammar Exercises

To ensure that learning continues and every student is gainfully occupied during this period, we seek your assistance in ensuring that your child/ward completes his/her assignments **latest by 26 October**. If your child/ward is travelling during the period 19-24 October, please remember to declare your travel plan in the LMS latest by 17 October. Should you need any clarifications, please feel free to contact your child/ward's Form Teacher. For technical problems on using the LMS, please contact Wizlearn Helpdesk at 6777 9661. Thank you for your support and cooperation.

Yours Sincerely,



Mrs Betty See
Vice-Principal



Mdm Cai Aimei
Year Head

(Please detach)

PSLE Marking Days/Primary 1 E-Learning Days

Name of student: _____

Class: _____

I have read and noted the contents of the circular (Ref no. PGPS/17/10/05) dated 13 October 2017.

Name of parent/guardian

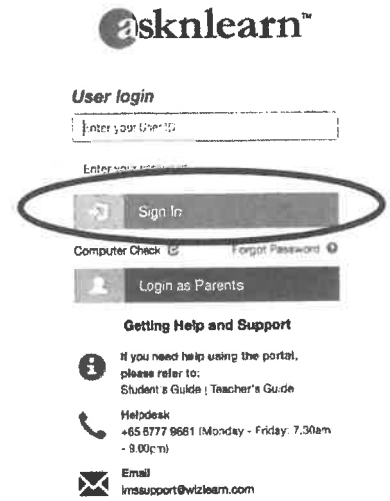
Signature and date

LMS Login Procedure:

If you need help on using the portal, please contact Helpdesk: ☎ +65 6777 9661 (Monday - Friday: 7.30 a.m. - 9.00 p.m.) ✉ lmssupport@wizlearn.com

Step 1:

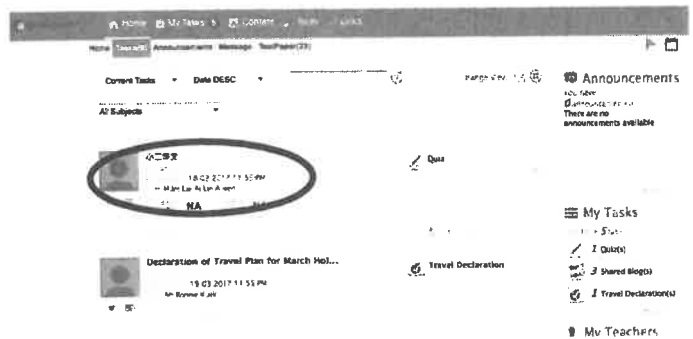
- To access the portal, login to http://lms.asknlearn.com/PUNGGOLGREEN_PS/
- Enter your child/ward's User ID (e.g. Birth Cert. No./FIN)
- Enter your child/ward's password (Default password: Birth Cert. No./FIN in uppercase)
- Click Sign in



Step 2: Click on My Tasks



Step 3: Click on lesson/assignment

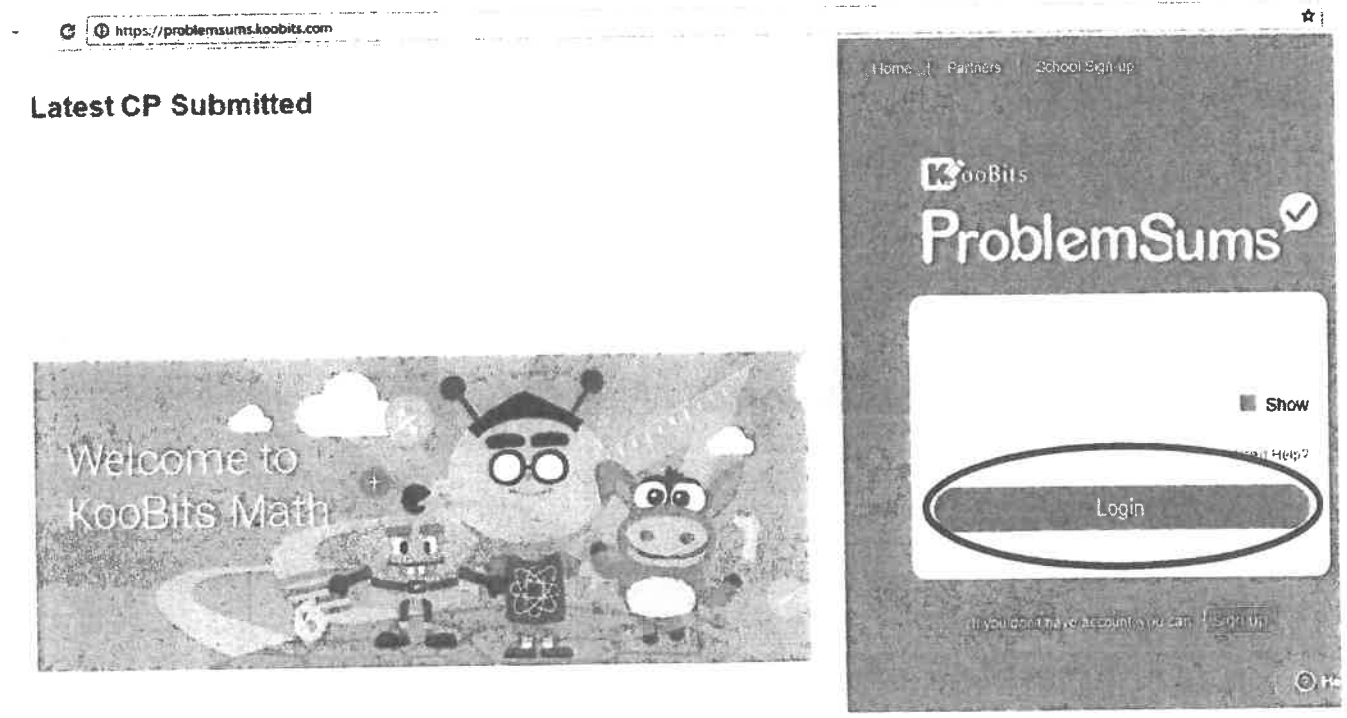


Step 4: Click and complete all tasks, one at a time. Upon completion, click on Home and repeat Steps 2, 3 and 4 for the next lesson/assignment.

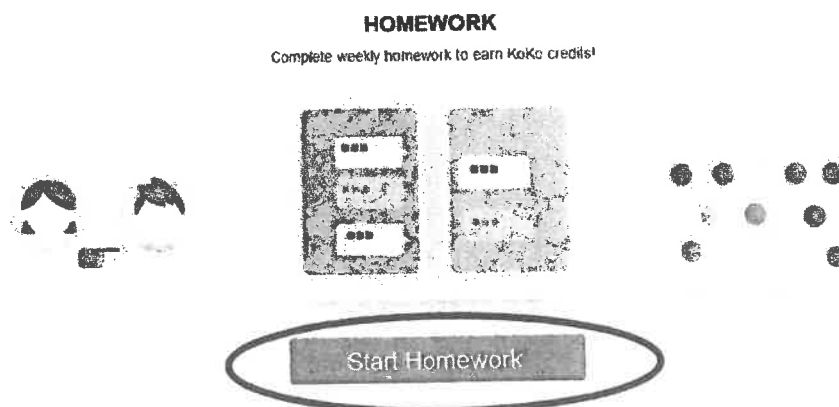
Koobits Login Procedure:

Step 1:

- a) To access the portal, login to <https://problemsums.koobits.com/>
- b) Enter your child/ward's Login ID (PGPS+last 3 digits+alphabet of student's BC) and password (same as Login ID)
- c) Click Login



Step 2: Click on Start Homework



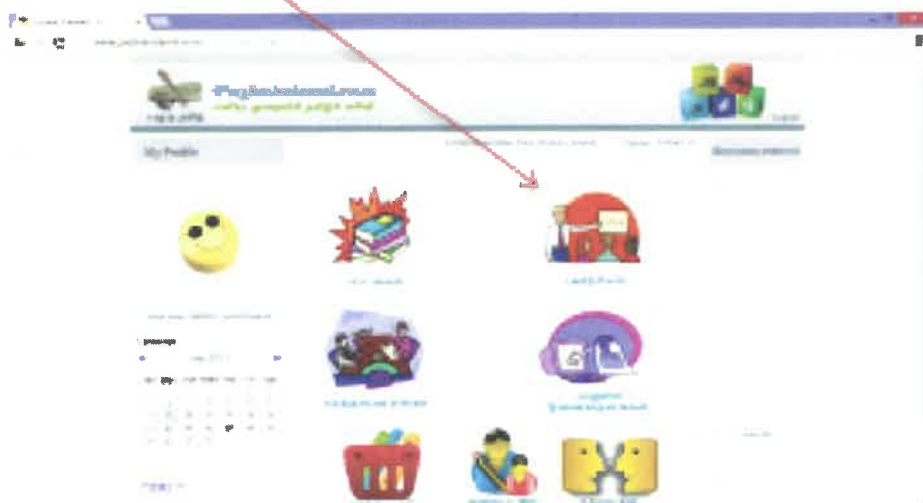
Step 3: Complete E-Learning Homework.

Student Guide to Access 'Pahzhautamil' E-learning Portal

1) Enter your username and password at www.pahzhautamil.com



2) Click on 'பயிற்சிகள்' to view the activities assigned by the teacher.



3) Click on 'open' to do the exercises.

